

102477

BERLIN TOWNSHIP

SURVEY FOR

S.E. QTR. SEC. 6

ABE L. BEACHY

E.D. Aug. 5, 1974

TWP. 9 RANGE 5

ROUTE 5

AT 1:42 D'CLOCK P.M.

HOLMES COUNTY

MILLERSBURG, O

RECORDED: Aug. 6, 1974

HOLMES CO. Plat VOL 7 PG. 312

OHIO

4454

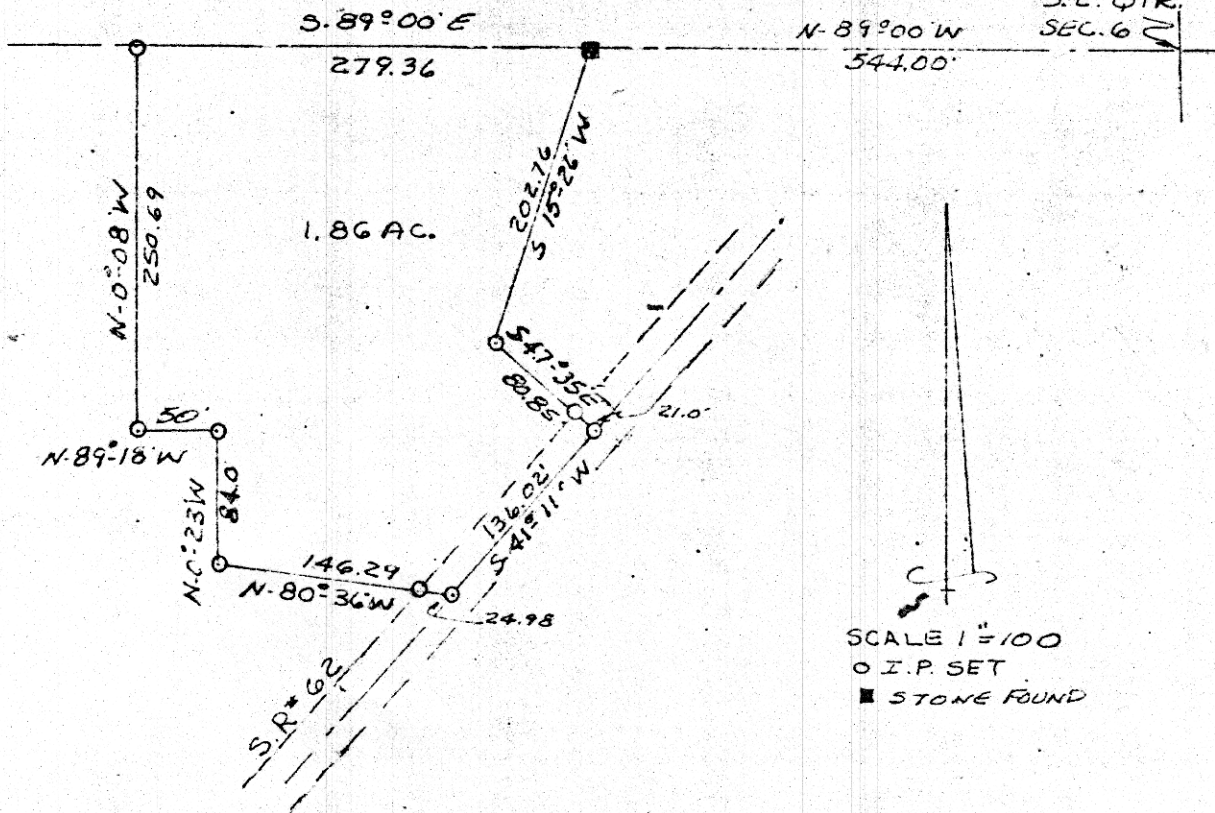
FEES 2.00

OCT. 1973

*Re Landman* RECORDER  
(L.S.)

Deed Vol. 188 Page 136

N.E. COR.  
S.E. QTR.  
SEC. 6



I CERTIFY THIS SURVEY TO BE CORRECT  
TO THE BEST OF MY KNOWLEDGE.

*Clyde E. Purdy*  
CLYDE E. PURDY R.S. 1900

MAP OFFICE COPY