

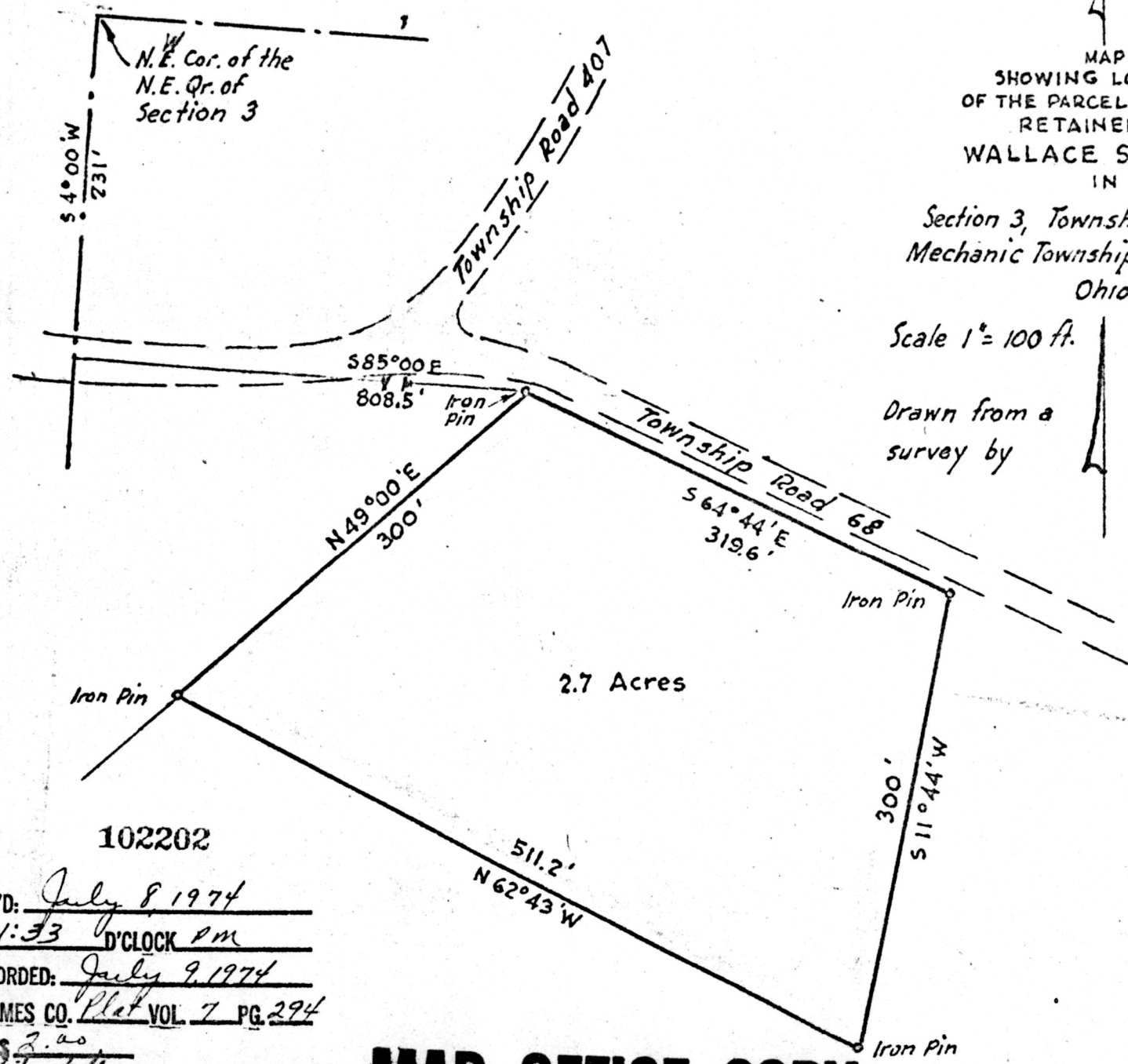
MAP  
SHOWING LOCATION  
OF THE PARCEL OF LAND  
RETAINED BY  
WALLACE SOMMERS  
IN

Section 3, Township 8, Range 6  
Mechanic Township, Holmes County  
Ohio

Scale 1" = 100 ft. Feb. 1961

Drawn from a  
survey by

William Sellner  
Reg. Sur. No. 3915



102202

2.7 Acres

REC'D: July 8, 1974  
AT 1:53 D'CLOCK PM  
RECORDED: July 9, 1974  
HOLMES CO. Plat VOL 7 PG 294  
FEES 2.00  
Richard Shaven RECORDER

**MAP OFFICE COPY**

VOL 7 PAGE 294

VOL