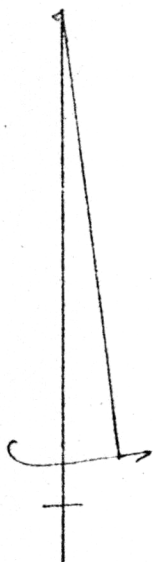
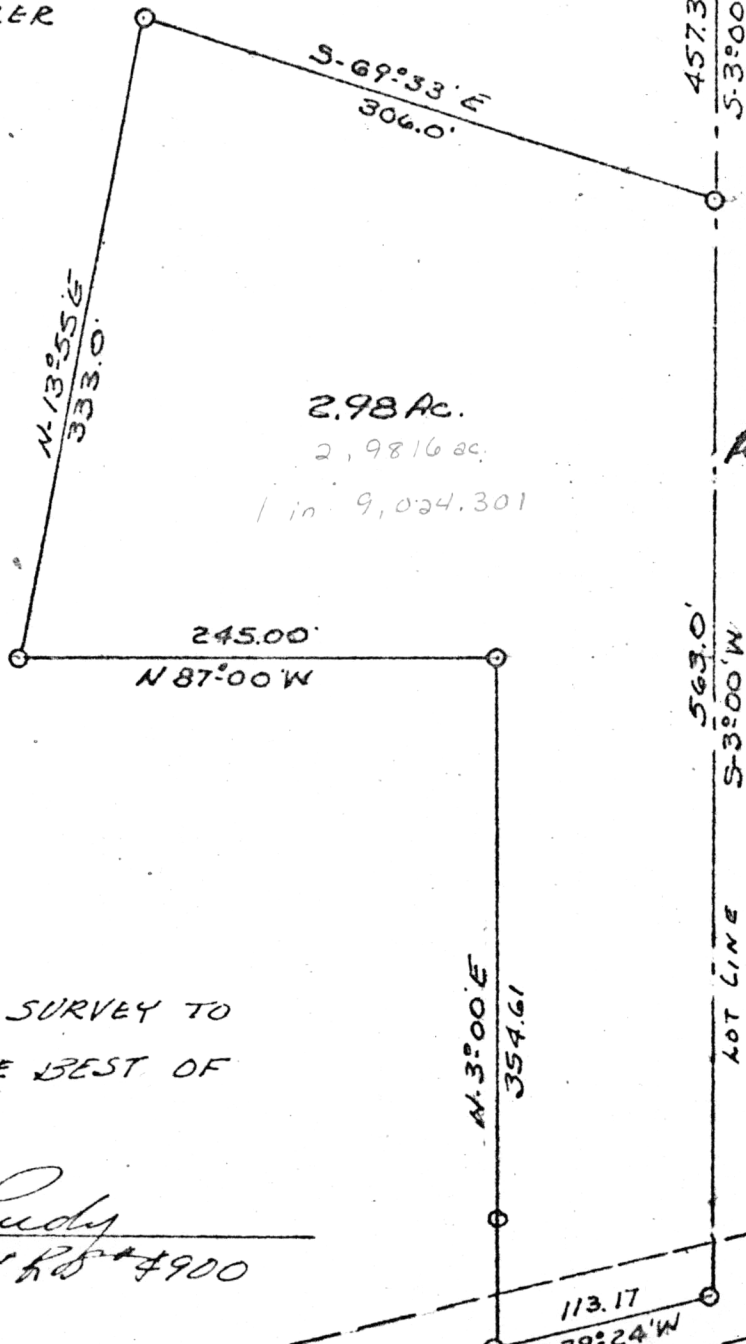


WALNUT CREEK TOWNSHIP
LOT NO. 2
T-9-N R-5-W
HOLMES COUNTY
OHIO

SURVEY FOR ROY E. MILLER



SCALE 1" = 100'
O I.P. SET



2.98 Ac.
2,9816 ac.
1 in 9,024.301

N.E. COR. LOT NO. 2
1ST QTR. T-9-N R-5-W

99783

REC'D. Aug. 31, 1973

AT 12:52 O'CLOCK PM

RECORDED Aug. 31, 1973

HOLMES CO. PLAT VOL 7 PG 113

FEE: \$ 2.00

Richard Crader RECORDER

Deed Vol. 184-Pg. 884

I CERTIFY THIS SURVEY TO
BE CORRECT TO THE BEST OF
MY KNOWLEDGE.

Clyde E. Purdy
CLYDE E. PURDY R.D. #4900

MAP OFFICE COPY