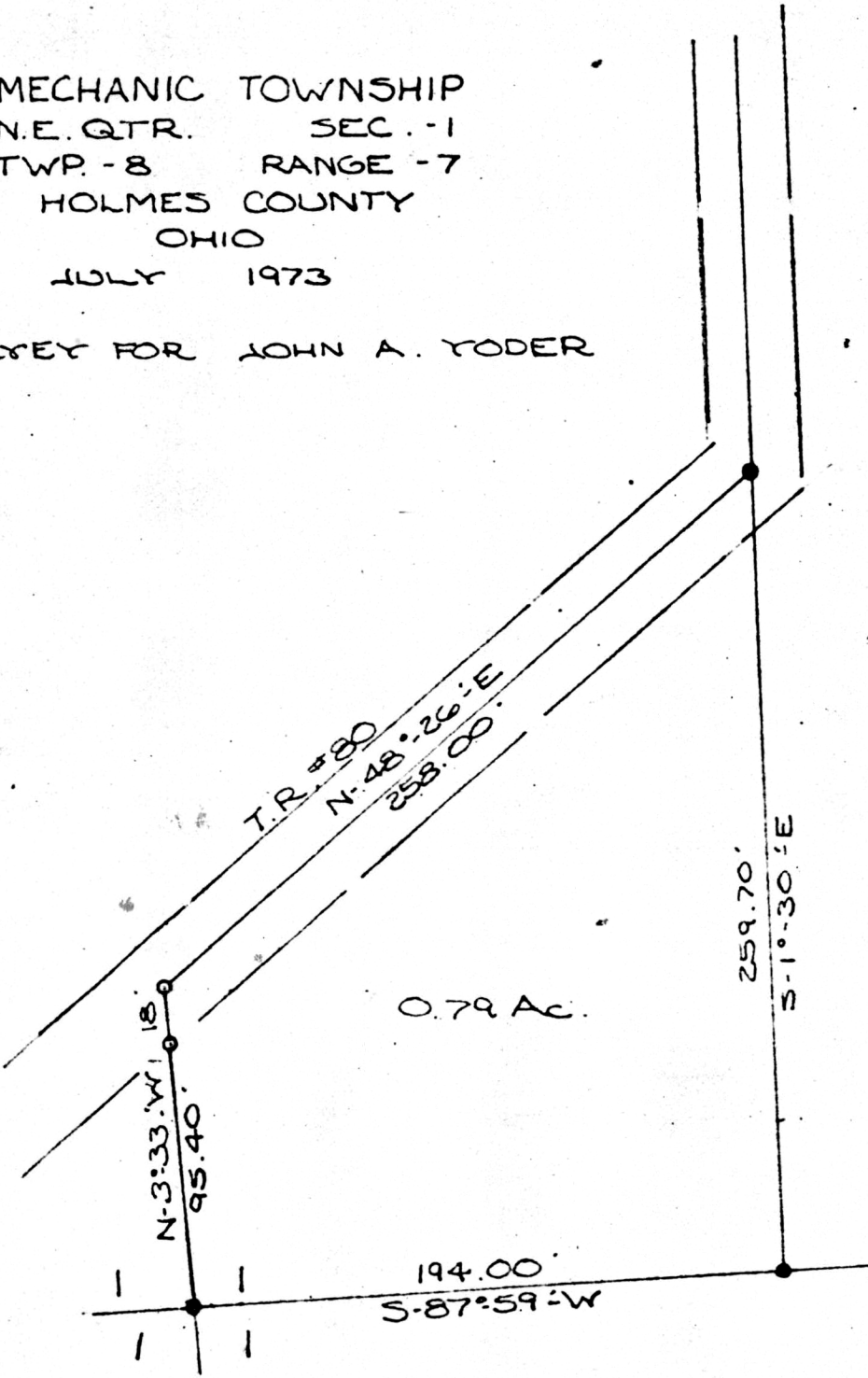


MECHANIC TOWNSHIP
N.E. QTR. SEC. -1
TWP. -8 RANGE -7
HOLMES COUNTY
OHIO
JULY 1973

SURVEY FOR JOHN A. YODER



SCALE 1"=60'

- I.P. FD.
- I.P. SET

99654

REC'D: August 15, 1973
 AT 3:59 O'CLOCK P.M.
 RECORDED: Aug. 16, 1973
 HOLMES CO. Map VOL 7 PG. 102
 FEE: \$ 2.00
Richard Craney RECORDER

I CERTIFY THIS SURVEY TO BE CORRECT TO THE BEST OF MY KNOWLEDGE.

Clyde E. Purdy
CLYDE E. PURDY

R.S. # 4900

MAP OFFICE COPY