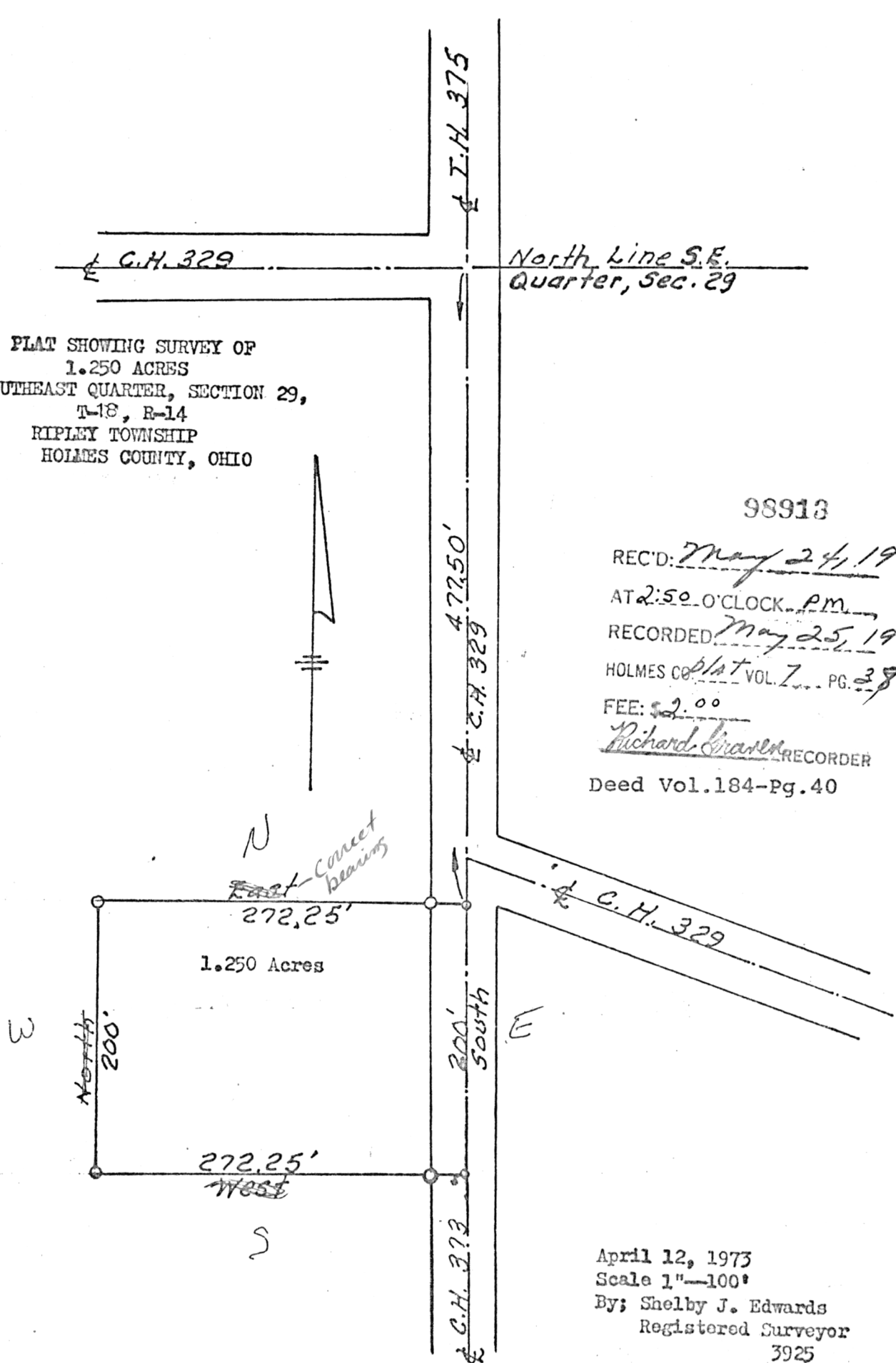
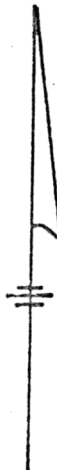


PLAT SHOWING SURVEY OF
 1.250 ACRES
 SOUTHEAST QUARTER, SECTION 29,
 T-18, R-14
 RIPLEY TOWNSHIP
 HOLMES COUNTY, OHIO



98913

REC'D: May 24, 1973

AT 2:50 O'CLOCK P.M.

RECORDED: May 25, 1973

HOLMES CO. plat VOL. 7 PG. 38

FEE: \$2.00

Richard Cramer RECORDER

Deed Vol. 184-Pg. 40

April 12, 1973
 Scale 1"=100'
 By: Shelby J. Edwards
 Registered Surveyor
 3925

MAP OFFICE COPY