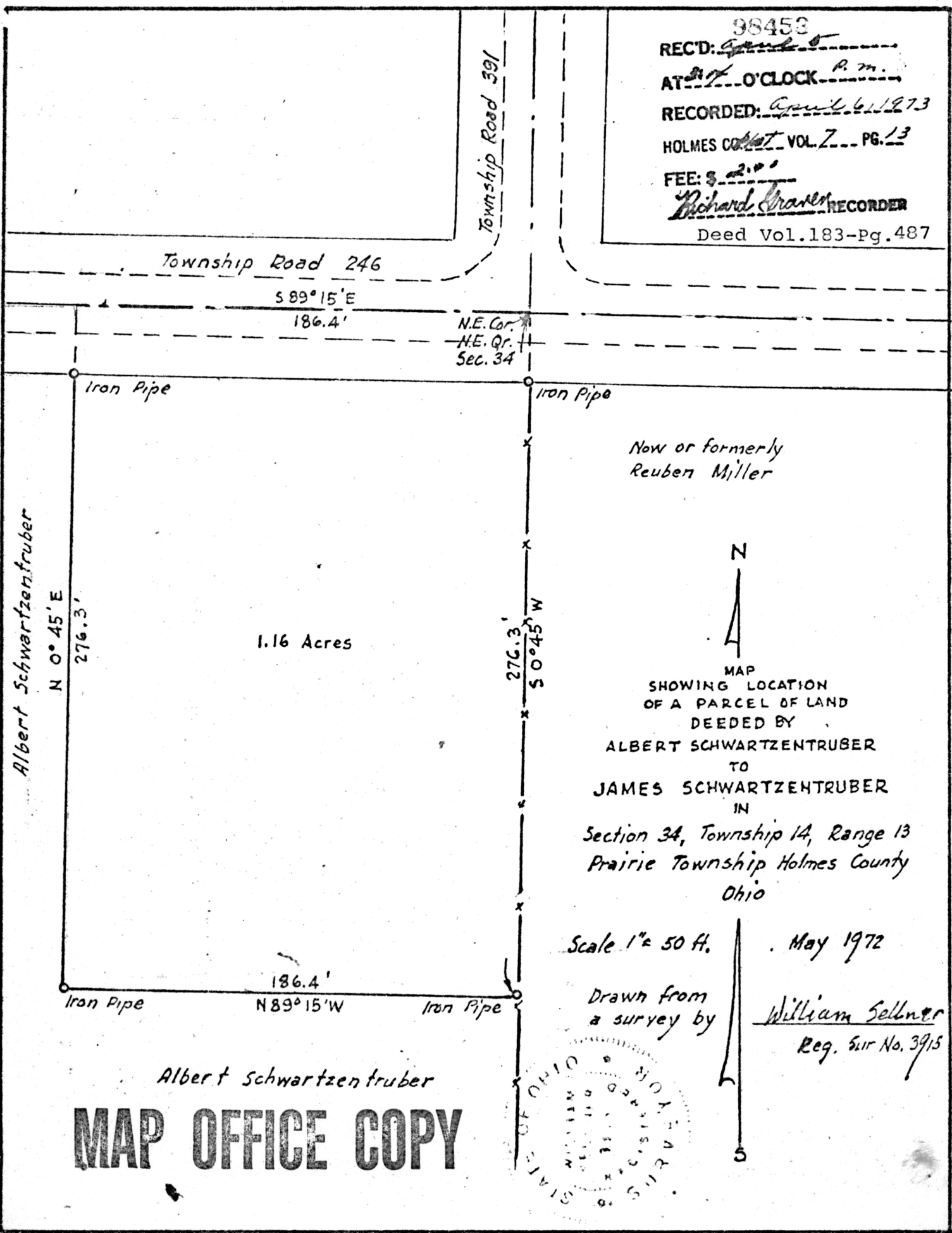


98453  
REC'D: *[Signature]*  
AT *11* O'CLOCK *P.M.*  
RECORDED: *April 6, 1973*  
HOLMES CO. *Vol. 7* PG. *13*  
FEE: \$ *2.00*  
*Richard Graves* RECORDER  
Deed Vol. 183-Pg. 487



Albert Schwartzentruber

1.16 Acres

Now or formerly  
Reuben Miller



MAP  
SHOWING LOCATION  
OF A PARCEL OF LAND  
DEEDED BY  
ALBERT SCHWARTZENTRUBER  
TO  
JAMES SCHWARTZENTRUBER  
IN  
Section 34, Township 14, Range 13  
Prairie Township Holmes County  
Ohio

Scale 1" = 50 ft.

May 1972

Drawn from  
a survey by

*William Sellner*  
Reg. Sur. No. 3915

Albert Schwartzentruber

MAP OFFICE COPY

