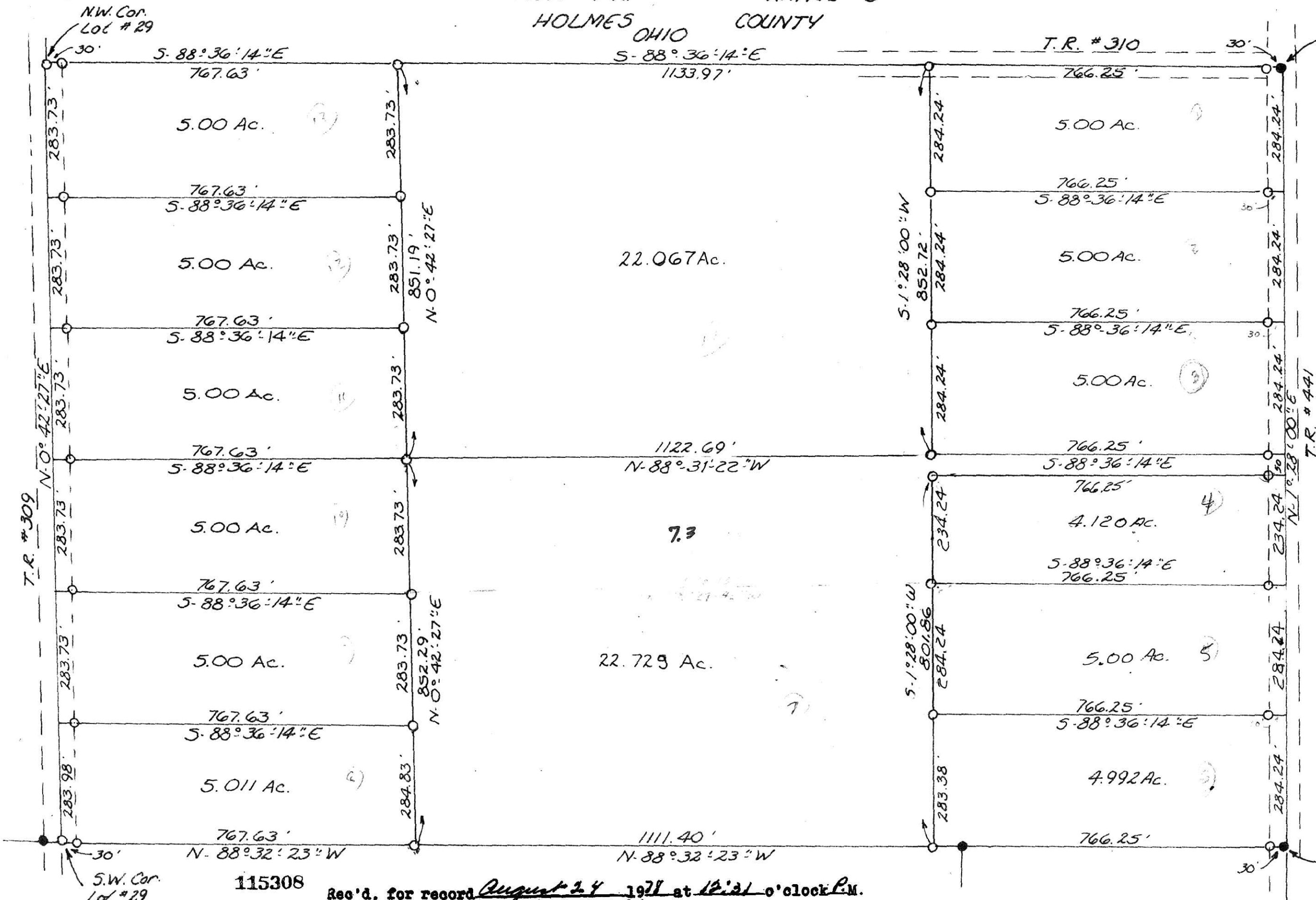


Completed - June, 1978

MONROE TOWNSHIP
LOT NO. 29 1st QTR. TOWNSHIP
TWP. - 9-N. RANGE - 8
HOLMES OHIO COUNTY

Survey made for - Tom Morris



N.E. Cor. Lot #29

N.W. Cor. Lot #29

Scale 1"=200'

- I.P. Found
- I.P. Set

I Certify this survey to be correct to the best of my knowledge.

Clyde E. Purdy
Clyde E. Purdy R.S. #4900

APPROVED BY
TAX MAP OFFICE

Date Aug 23, 1978

S.E. Cor. Lot #29

S.W. Cor. Lot #29

115308

Rec'd. for record August 24, 1978 at 12:31 o'clock P.M.
Recorded Aug 24, 1978 in Plat Vol. 6 Pg. 177
Holmes County, Ohio Richard Brown Recorder. Fee: \$ 4.82

12x18 x 2