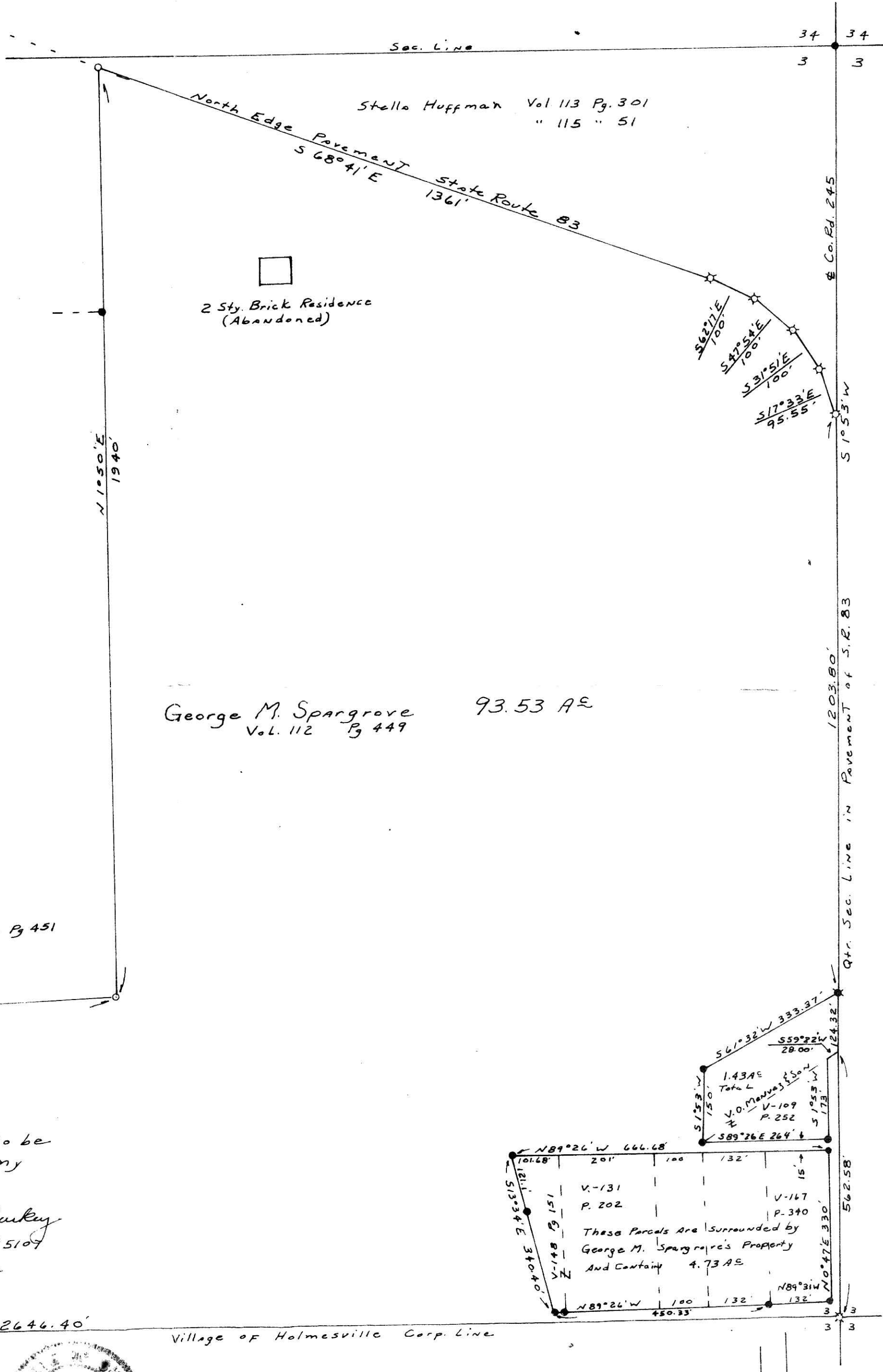


by [unclear]

George M. Spangrove Survey
N.W. Quarter Section 3
Township 13 Range 13
Prairie Township
Holmes County, Ohio
Completed April 10, 1976



Stella Huffman Vol 113 Pg. 301
" 115 " 51

2 Sty. Brick Residence
(Abandoned)

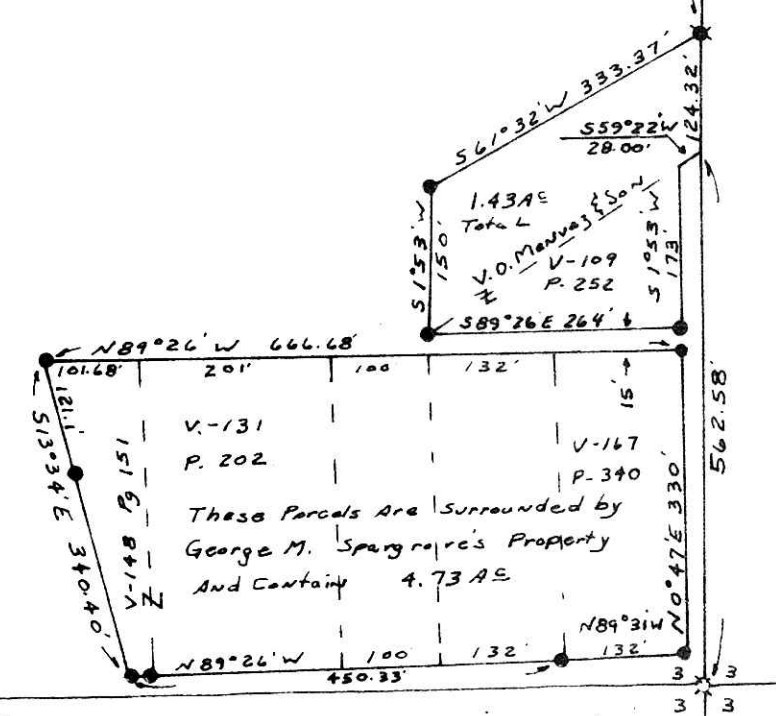
George M. Spangrove 93.53 A±
Vol. 112 Pg. 449

- Pin Set
 - Pin Fd.
 - ⊠ Spike Set
 - Cor. Post Fd.
- Scale 1" = 200'



J. Thomas Wilson V-126 Pg 451

I certify this survey to be
Correct to the best of my
Knowledge & Belief
Signed William J. Burkey
Reg. Surveyor # 5107
State of Ohio



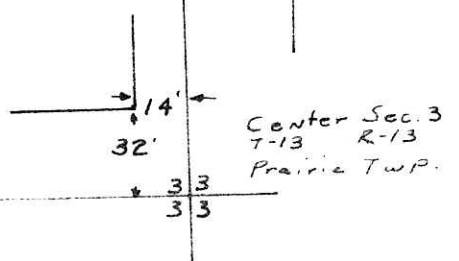
108539
REC'D: Aug. 23-1976
AT 11:42 O'CLOCK A.M.
RECORDED: Aug. 23-1976
HOLMES CO. Plot VOL. 6 PG. 113
FEE: \$ 5.44
Richard Shew RECORDER
17x14x2

Walboldt

Qtr. Sec. Line N 88° 02' W 2646.40'
Village of Holmesville Corp. Line



MAP OFFICE COPY



90766-626