

107691 INDEXED

REC'D: June 2, 1976

AT 9:16 O'CLOCK A.M.

RECORDED: June 2, 1976

HOLMES CO. Vol. 194 Pg. 103

FEE \$ 4.32

Richard J. [Signature] RECORDER

18x12x2

Deed: Vol. 194 Pg. 279

New proposed 10' P/W for 34.5KV UG. (this P/W preferred by Hospital)

Pole 65 is on Property line will be terminal Pole for new 34.5KV UG Cable.

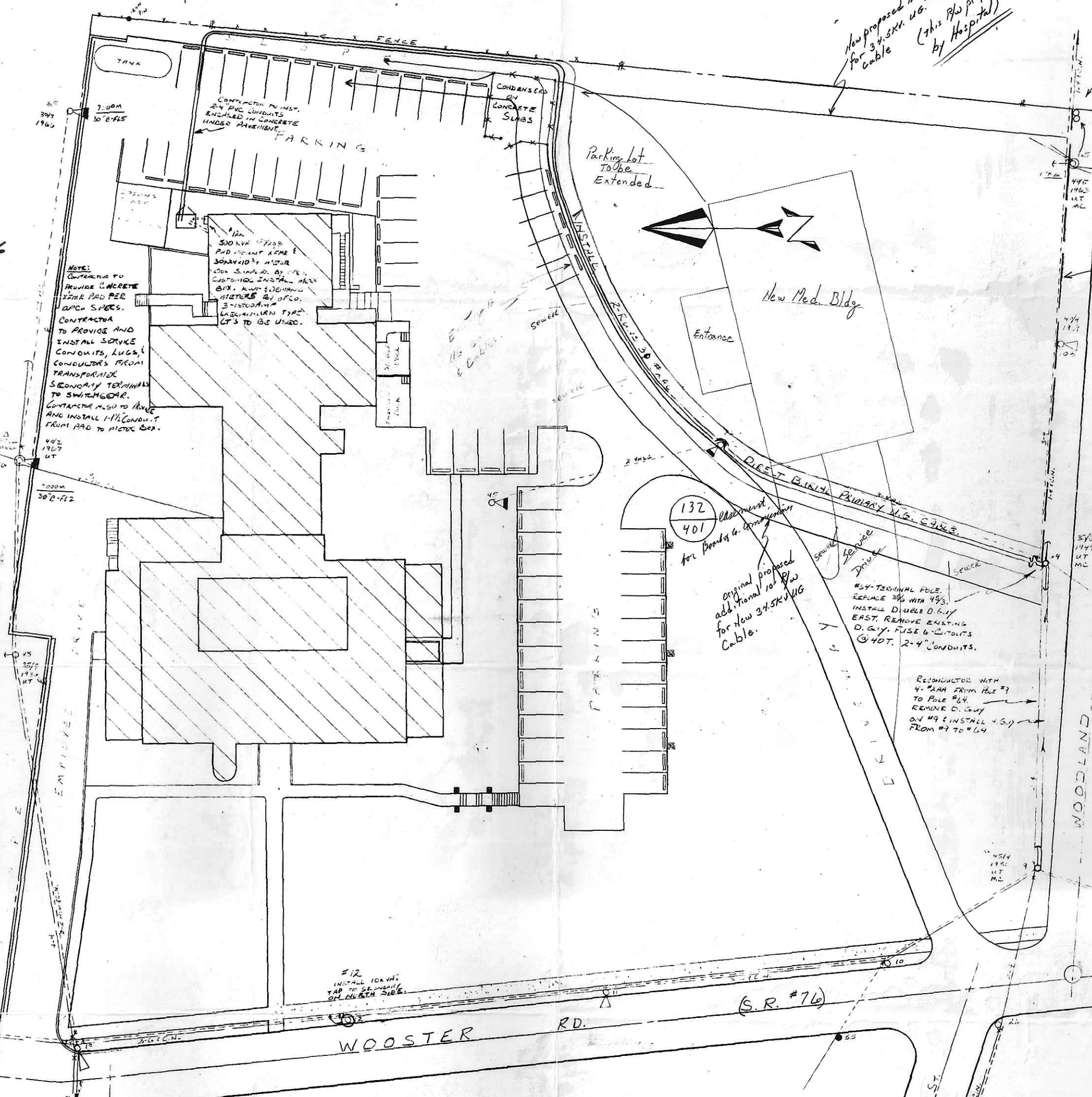
Primary to be 3d from pole 64 to 65.

CPR # 1070D4

#46 REPLACE 492 WITH 34.5 TRANSFER O.D. LINE. REMOVE 34 B.W.N. AND SERVICE. REMOVE BOTH D.GUYS.

#45 REMOVE D.GUY & LUT POLE OFF INDUSTRIAL SERVICE. WILL BE U.T. BY I.L.C. TERMINAL POLE.

REMOVE PRIMARY OVERHEAD FACILITIES. LEAVE 2-WIRE SECONDARY & CONDUIT TO 120 VOLTS TO SERVE BLDG LITES.



NOTE: CONTRACTOR TO PROVIDE CONCRETE SPUR PAD PER SPEC. S.P.E.S. CONTRACTOR TO PROVIDE AND INSTALL SERVICE CONDUITS, LUGS & CONDUCTORS FROM TRANSFORMER SECONDARY TERMINAL TO SWITCHGEAR. CONTRACTOR ALSO TO REMOVE AND INSTALL 1-1/2" CONDUIT FROM PAD TO METER EXP.

500VVA P/W. PAD MOUNT NEAR 30x40x10' METER BOX. KWH-EDMETER METER & METER TYPE. UT'S TO BE USED.

132 401 Change for P/W to 34.5KV UG. Original proposed additional 10' P/W for new 34.5KV UG Cable.

#44 TERMINAL POLE. REPLACE 396 WITH 493. INSTALL DOUBLE D.GUY EAST. REMOVE EXISTING D.GUY. FUSE 6" CIRCUTS @ 40T. 2-4" CONDUITS.

RECONDUCTOR WITH 4" P/W FROM POLE #9 TO POLE #64. REMOVE D. GUY ON #9 & INSTALL 1-5/8" FROM #9 TO #64.

#12 INSTALL 10KV W. TAP TO SECONDARY ON NORTH SIDE.

REMOVE D.GUY FROM #13 TO #47. REMOVE D.GUY FROM #47.

OHIO POWER CO.
 JOEL POMERENE HOSPITAL
 UNDERGROUND-MILLERSBURG

DRAWN BY: [Signature] DATE: 2-17-76
 CHECKED BY: [Signature] SCALE: [Signature]
 APPROVED BY: [Signature]

3D-1776