

PRAIRIE TOWNSHIP
 S.E. QTR. SEC. 26
 S.W. QTR. SEC. 25
 TWP-14-N RANGE-13-W
 HOLMES COUNTY
 OHIO

INDEXED 106514

REC'D: *December 29, 1975*
 AT 1:20 O'CLOCK P.M.
 RECORDED: *Dec. 30, 1975*
 HOLMES CO. Plat VOL. 6 PG. 87
 FEE: \$ 3.60

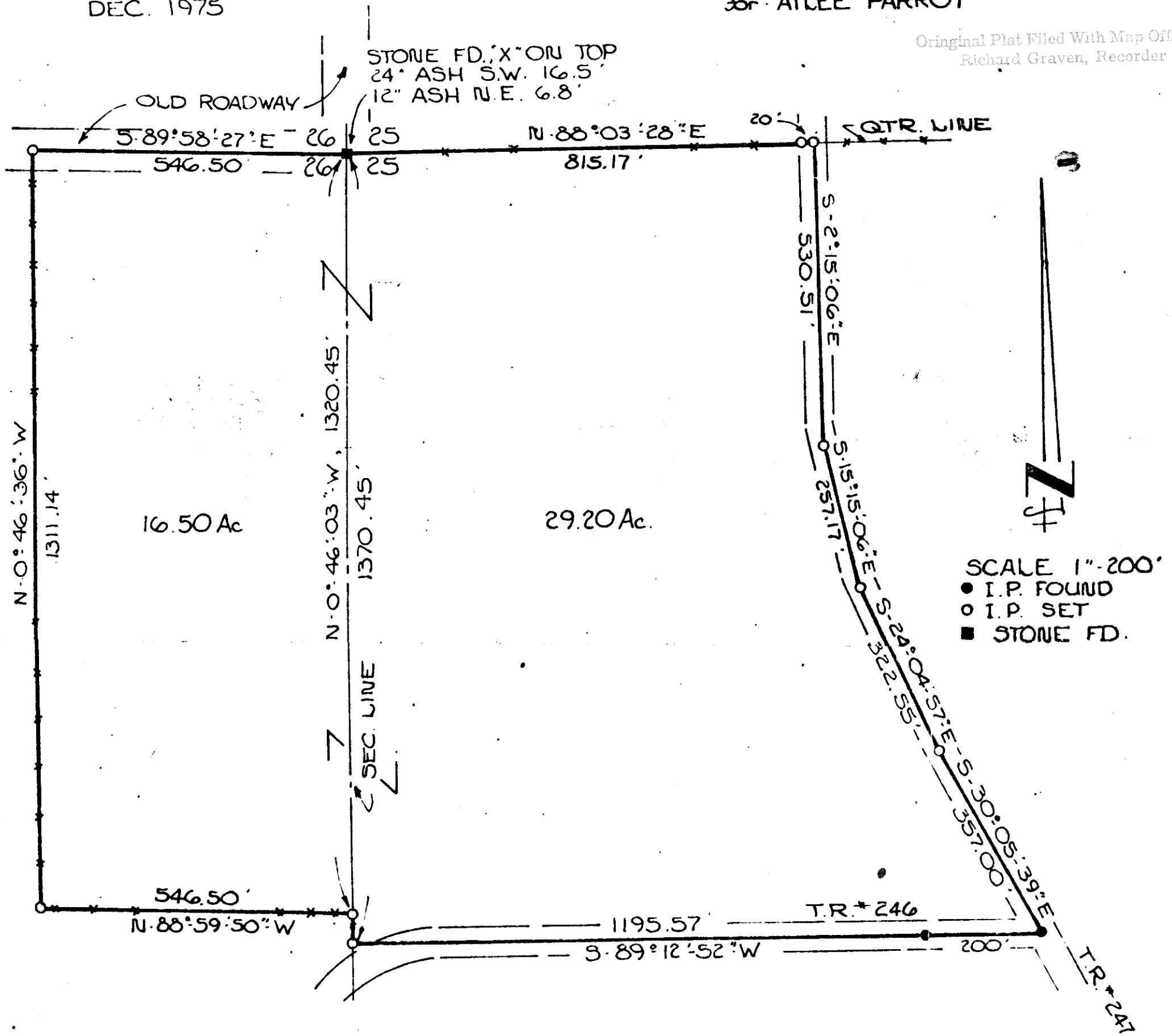
Richard Graven RECORDER
 18-12 (d. 2.)

Deed Vol. 192-Pg. 681

For ATLEE PARROT

DEC. 1975

Original Plat Filed With Map Office
 Richard Graven, Recorder



I CERTIFY THIS SURVEY TO BE CORRECT TO THE BEST OF MY KNOWLEDGE

Clyde E. Purdy
 CLYDE E. PURDY R.S. #4900