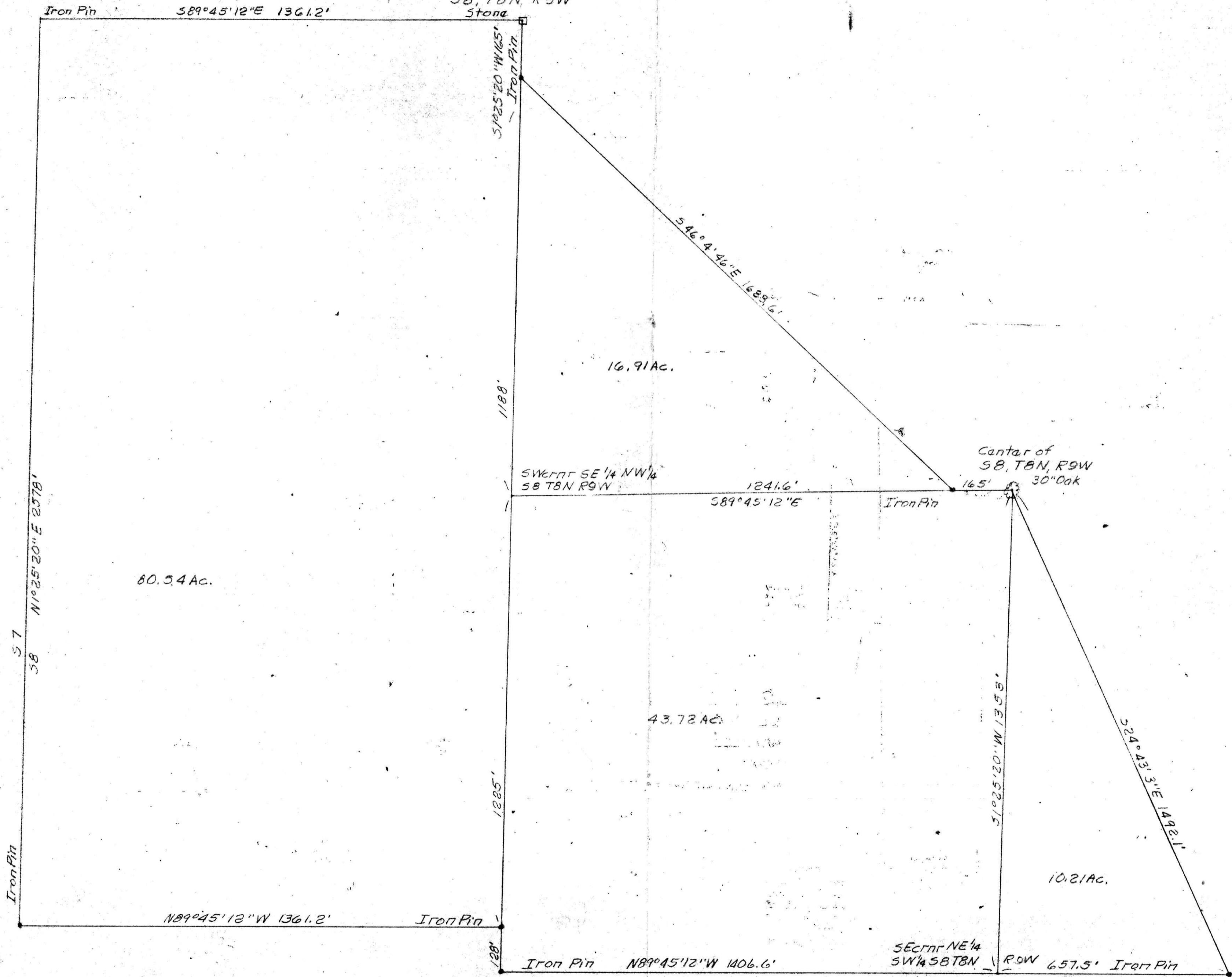


NW corner SW 1/4 NW 1/4
S8, T8N, R9W

NE corner SW 1/4 NW 1/4
S8, T8N, R9W
Stone



Scale: 1"=200'

104783

RECTD: May 23, 1925

AT 3:13 O'CLOCK P.M.

RECORDED: May 23, 1925

HOLMES CO. PL VOL. 6 PG. 64

FEE: \$ 7.14

Richard M. ... RECORDER



PLAT OF SURVEY OF
Part of S8, T8N, R9W, Richland Twp. Hol. Co., Ohio
Robert L. Kasner RS. 5193 PE. 28820