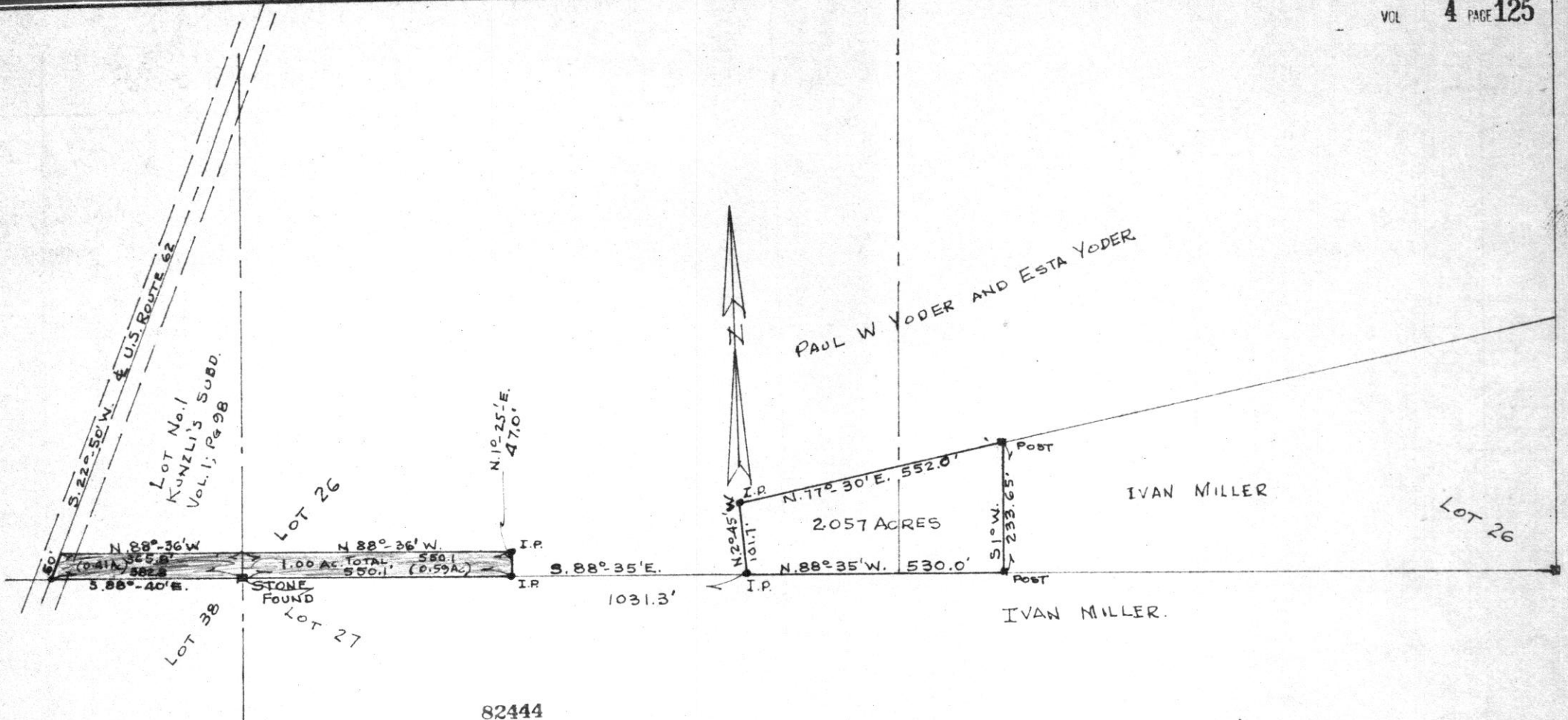


16 1/4 X 10 1/4



82444

REC'D: *January 3-1967*
 AT *10:07 O'CLOCK* # *A.*
 RECORDED: *January 4, 1967*
 HOLMES CO. VOL. *4* PG. *125*
 FEE: *\$1.67*
Wesley Anderson RECORDER



SURVEY OF A PART OF LOT 26 AND A PART OF LOT No. 1 OF KUNZLI'S SUBDIVISION IN THE 3RD QUARTER TOWNSHIP 10, RANGE 4, PAINT TOWNSHIP, HOLMES COUNTY, OHIO FOR PAUL PAUL W. YODER AND ESTA YODER R.H. HUNSINGER, #3685, REG. SURVEYOR.		
SCALE 1" = 200'	DATE <i>AUG 1966</i>	FILE

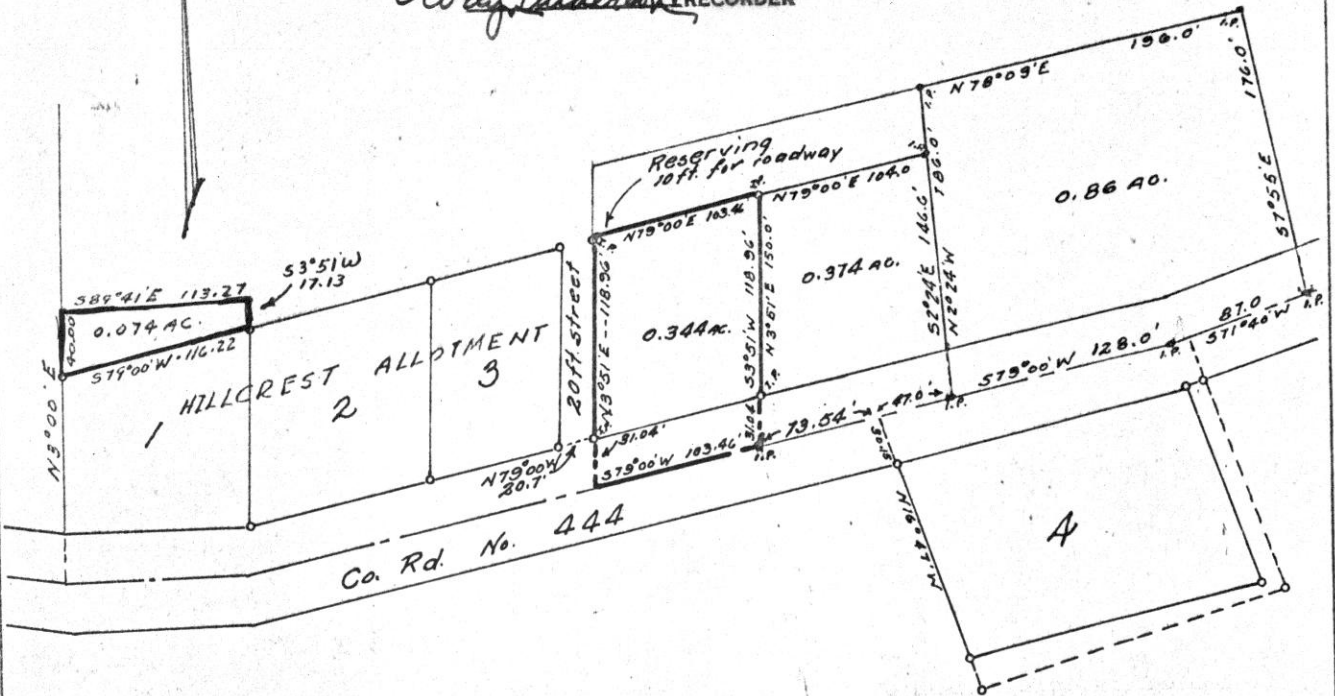
DRAWN BY _____
 CHECKED BY _____

82439

VOL 4 PAGE 125

REC'D: December 30-1966
AT 3:20 O'CLOCK P.M.
RECORDED: January 3, 1967
HOLMES CO. Plat VOL. 4 PG. 125
FEE: \$ 1.00

Evelyn Anderson RECORDER



Dean Davidson

LESTER TROYER SURVEY
WALNUT CREEK TWP.
N.E. Qn Sec. 20 T-9 R-5

0.344 AC. TR.
0.374 " "
0.860 " "
0.074 " "

T. DEAN DAVIDSON
REGISTERED SURVEYOR No. 4776
1116 WALNUT ST. - DOVER, OHIO
Phone 52643

Scale 1" = 100' Date March, 1963
Nov. 1966 May, 1963

125

82466

REC'D: *Jan 5 - 1967*

AT *2:30 O'CLOCK P.M.*

RECORDED: *Jan 6 - 1967*

HOLMES CO. VOL. *4* PG. *125*

FEE: \$ *1.00*

Evly Anderson RECORDER

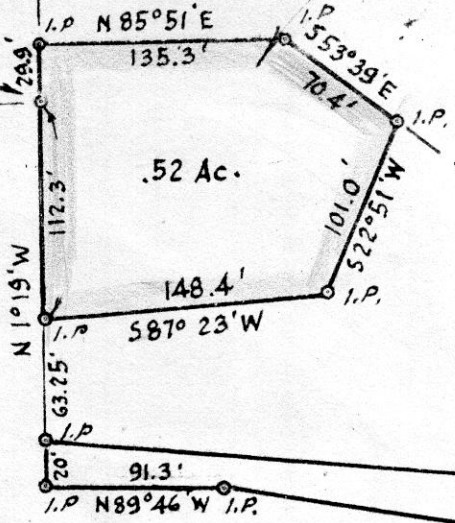
SO. MONROE ST.

Parcel Deeded by Wade Logsdon to H.C. Logsdon

S.E. Cor. of Monroe St

Lee Fair

N 83° 13' E
377.52'



Wade Logsdon

H. C. Logsdon

Parcel Deeded by H.C. Logsdon to Wade Logsdon

MAP
SHOWING TRANSFER OF LAND
BETWEEN
H. C. LOGSDON
AND
WADE LOGSDON
IN

Section 19, Township 9, Range 7
Hardy Twp, Holmes County
Ohio

Scale 1" = 1 ft.

Dec. 1965

Drawn from
a survey by *William Sellner*
Reg. Sur. No. 3915

WASHINGTON STREET

N 7° 00' W 584.1'

15'
543.4'

Stone (found)

South Line N.E. Qr. of Sec. 19, Millersburg South Corp. Line



82468

REC'D January 5-1967

AT 2:30 O'CLOCK P.M.

RECORDED: Jan. 6-1967

HOLMES CO. VOL. 4 PG. 125

FEE: \$ 1.00

Evly Anderson RECORDER

SO. MONROE ST.

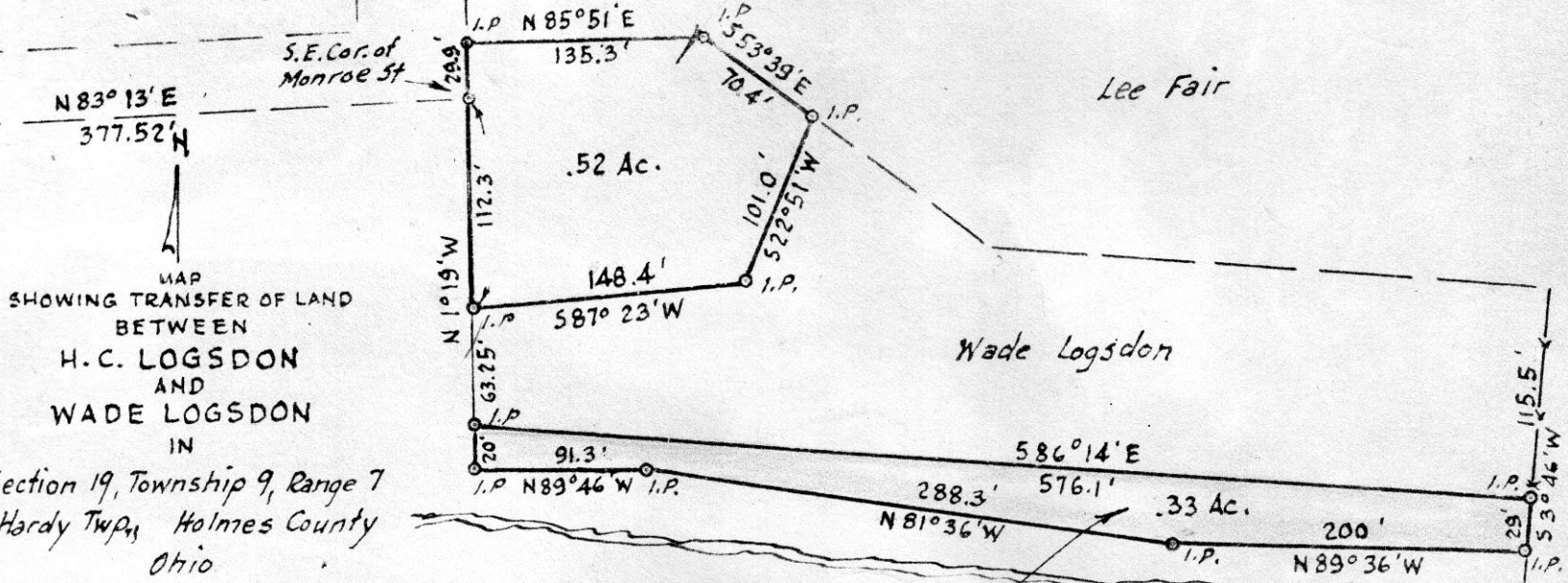
Parcel Deeded by Wade Logsdon to H.C. Logsdon

Lee Fair

Wade Logsdon

H.C. Logsdon

Parcel Deeded by H.C. Logsdon to Wade Logsdon



MAP SHOWING TRANSFER OF LAND BETWEEN H.C. LOGSDON AND WADE LOGSDON IN

Section 19, Township 9, Range 7 Hardy Twp., Holmes County Ohio

Scale 1" = 1 ft. Dec. 1965

Drawn from a survey by *William Sellner* Reg. Sur. No. 3915

WASHINGTON STREET

15' 543.4'

Stone (found)

South Line N.E. Qr. of Sec. 19, Millersburg South Corp. Line

