

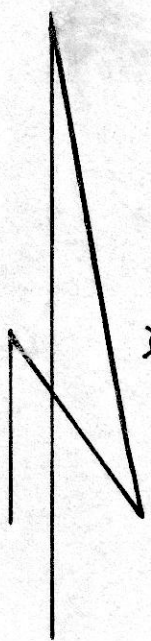
15 x 11 1/2

KILLBUCK VALLEY SPORTSMEN SURVEY  
SOUTH WEST QUARTER SECTION 10  
TOWNSHIP 13 RANGE 13  
PRAIRIE TOWNSHIP HOLMES COUNTY  
OHIO

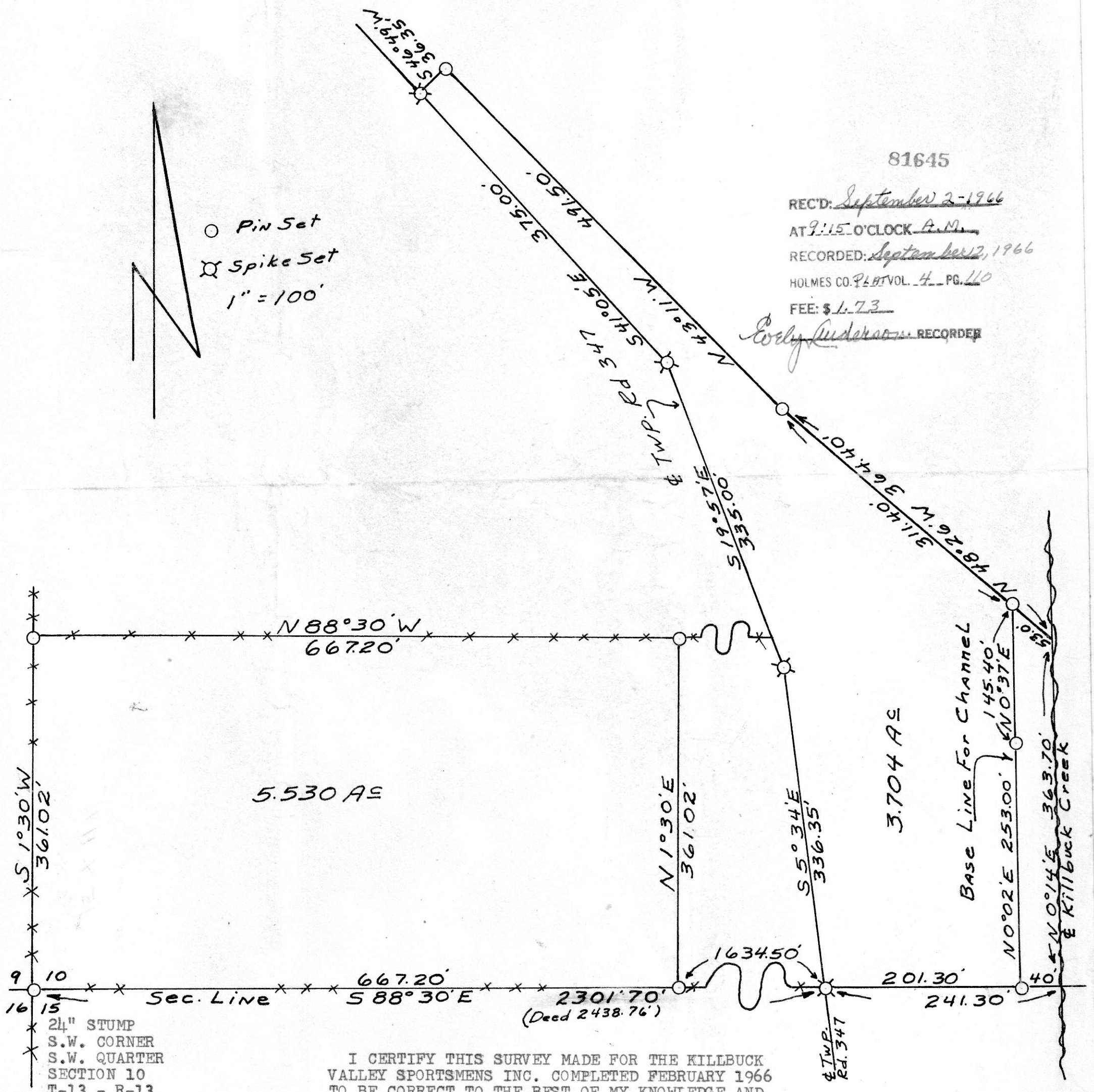
81645

REC'D: September 2-1966  
AT 9:15 O'CLOCK A.M.  
RECORDED: September 12, 1966  
HOLMES CO. PLATVOL. 4 PG. 110  
FEE: \$ 1.73

*Evly Anderson* RECORDER



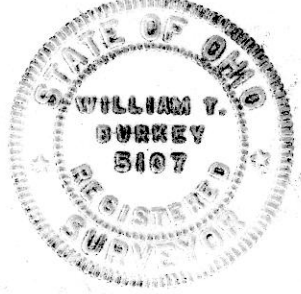
○ Pin Set  
⊗ Spike Set  
1" = 100'



24" STUMP  
S.W. CORNER  
S.W. QUARTER  
SECTION 10  
T-13 - R-13  
PRAIRIE TWP.  
HOLMES COUNTY, O.

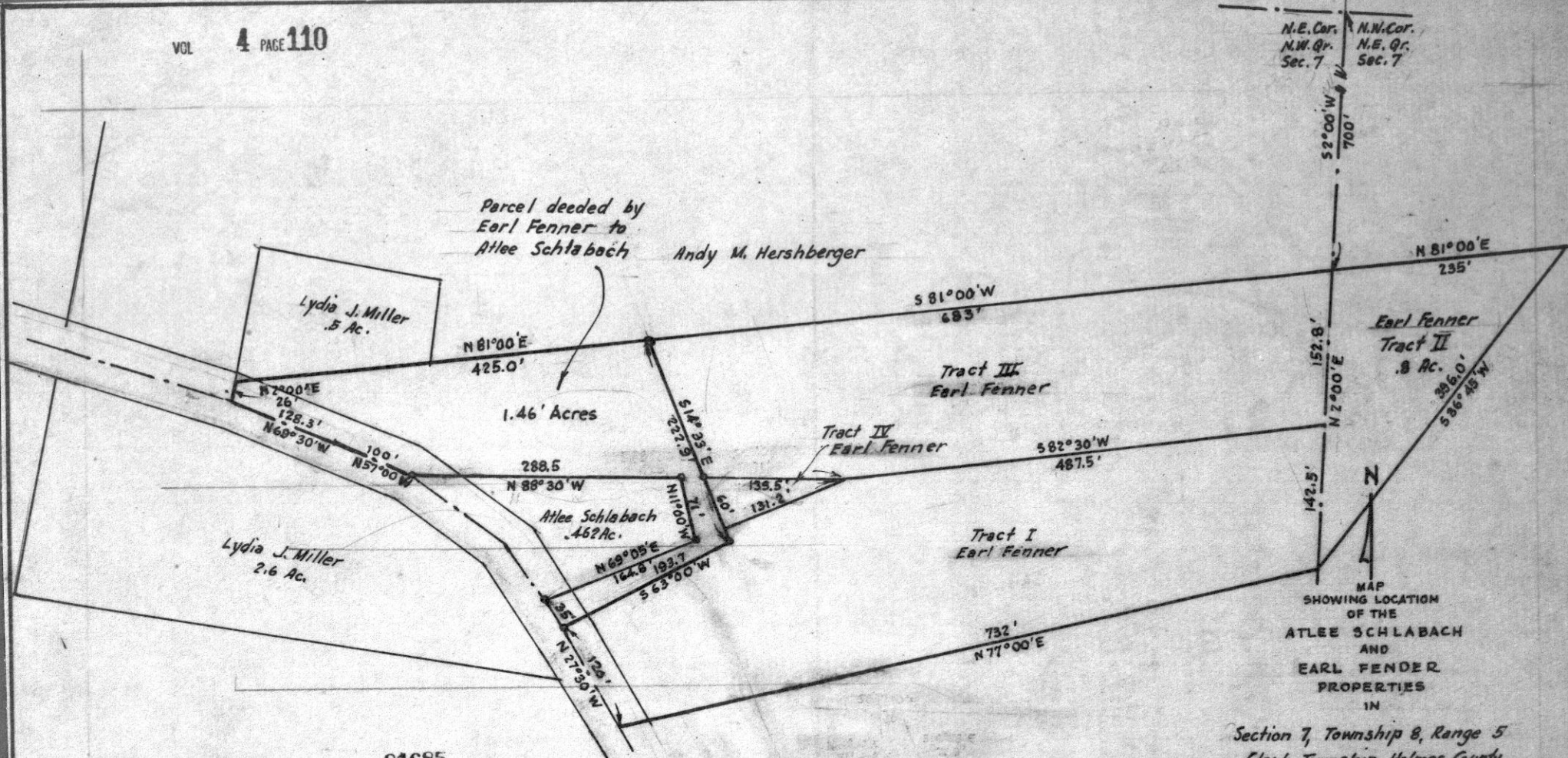
I CERTIFY THIS SURVEY MADE FOR THE KILLBUCK VALLEY SPORTSMEN INC. COMPLETED FEBRUARY 1966 TO BE CORRECT TO THE BEST OF MY KNOWLEDGE AND BELIEF.

SIGNED *William T. Burkey*  
WILLIAM T. BURKEY  
REGISTERED SURVEYOR #5107  
STATE OF OHIO





16 1/2 x 10 1/4



81685

REC'D. *September 9-1966*  
 AT 10:17 O'CLOCK A.M.  
 RECORDED: *Sept. 12-1966*  
 HOLMES CO. Plat VOL. 4 PG. 110  
 FEE: \$1.70

*Cosby Anderson* RECORDER



Scale 1" = 100 Ft.

Drawn from a survey & records by

July 1966

*William Sellner*  
 Reg. Sur. No. 3915

W01X-101