

Holmes County Road 77

REC'D: September 2, 1965

79438

AT 9:15 O'CLOCK A.M.

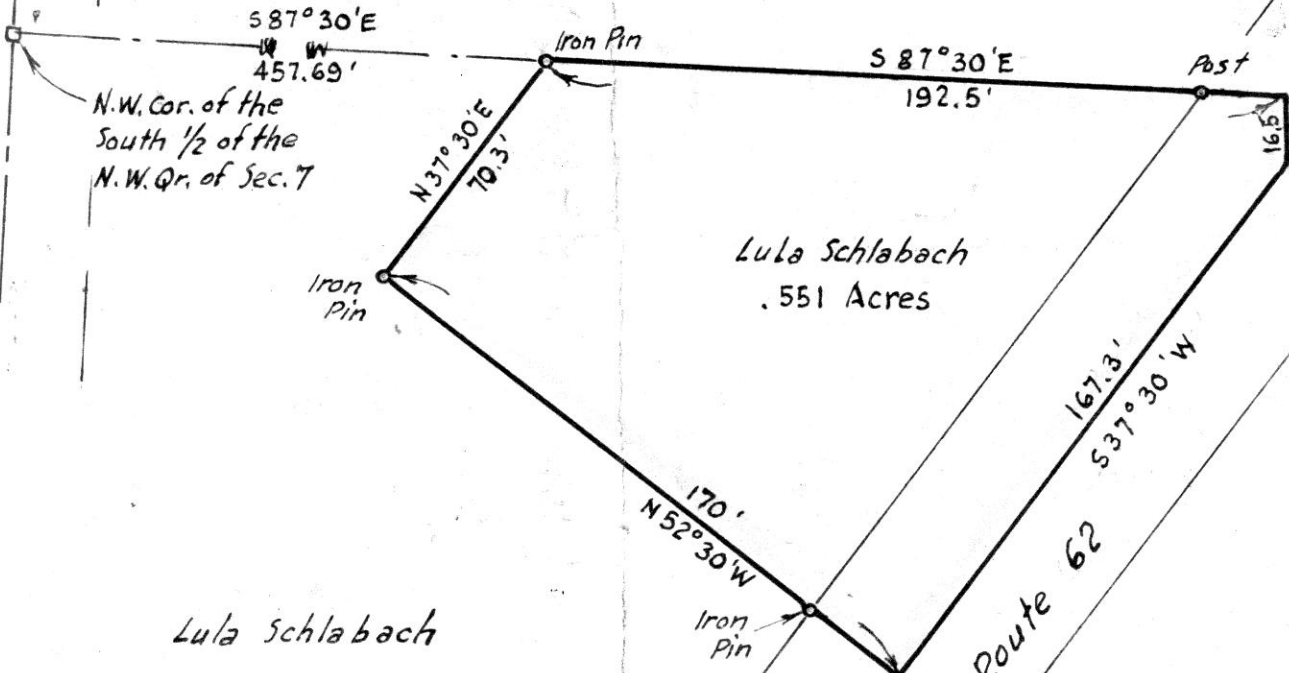
RECORDED: September 2, 1965

HOLMES CO. PLAT VOL. 4 PG. 70

FEE: \$1.00

Evelyn Anderson RECORDER  
E.S.

Vernon Kaufman



N.W. Cor. of the  
South 1/2 of the  
N.W. Qr. of Sec. 7

Lula Schlabach

Lula Schlabach  
.551 Acres

S 3° 00' E

Winesburg

Sue  
Mullett

MAP  
SHOWING LOCATION  
OF A PARCEL OF LAND  
TO BE RETAINED BY  
LULA SCHLABACH  
IN

Section 7, Township 9, Range 5  
Berlin Township, Holmes County  
Ohio

Scale 1" = 50 ft.

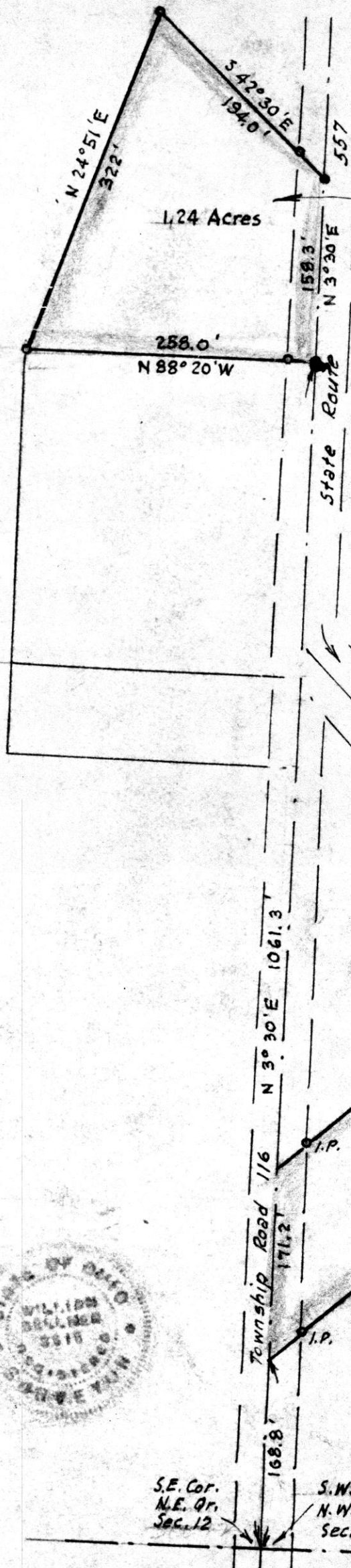
Aug. 1961

Drawn from a  
survey by

William Sellner  
Reg. Sur. No. 3915

No Buildings





Parcel deeded to John L. Miller

MAP SHOWING LOCATION OF 2 PARCELS OF LAND ON THE

ANDY J. A. YODER FARM IN

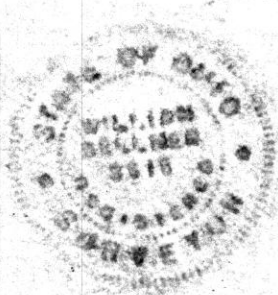
Sections 11-12 Township 8, Range 5 Clark Township, Holmes County Ohio

Scale 1" = 100 ft. July 1965

Drawn from a survey by

William Sellner Reg. Sur. No. 3915

Parcel deeded to Mose C. Miller



S.E. Cor. N.E. Qr. Sec. 12

S.W. Cor. N.W. Qr. Sec. 11

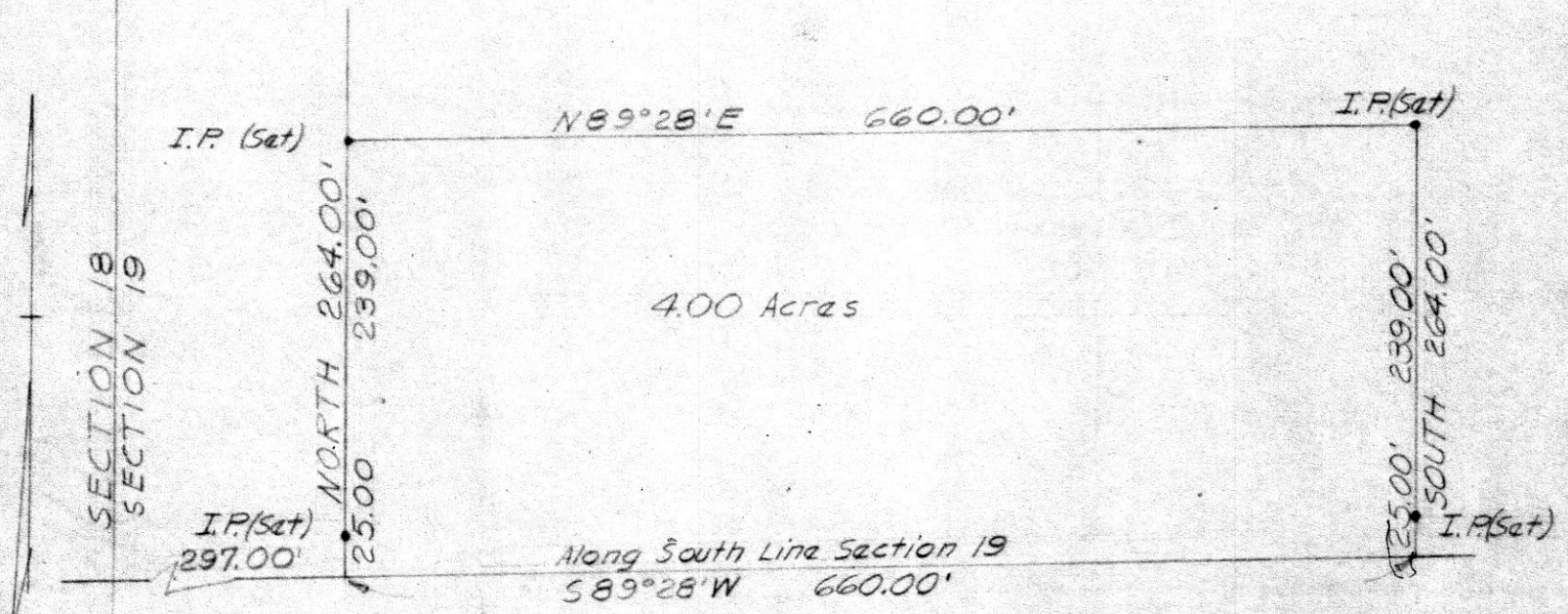
79480

REC'D. September 9-1965 AT 1:00 O'CLOCK P.M. RECORDED. September 3-1965 HOLMES COUNTY VOL. 4 PG. 70

SEE: Skelton

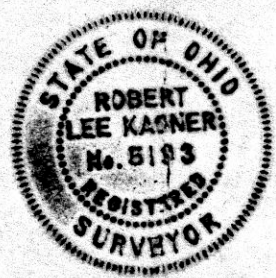
Coody Anderson RECORDER

Lands of Eli D. & Emma Yoder



4.00 Acres

79468  
 RECD: Sept 7 1965  
 AT 1:50 O'CLOCK P.M.  
 RECORDED: Sept. 8 1965  
 HOLMES COUNTY VOL. 4 PG. 70  
 FEE: \$ 1.00  
Lesly Anderson RECORDER



SITUATED IN MECHANIC TWP.  
 HOLMES COUNTY OHIO  
 Being a part of the West  
 Half of the SW Quarter of Sect 19  
 Robert Lee Kasner  
 Robert Lee Kasner  
 Reg. Surv. No. 5193