

12 1/2" x 10"

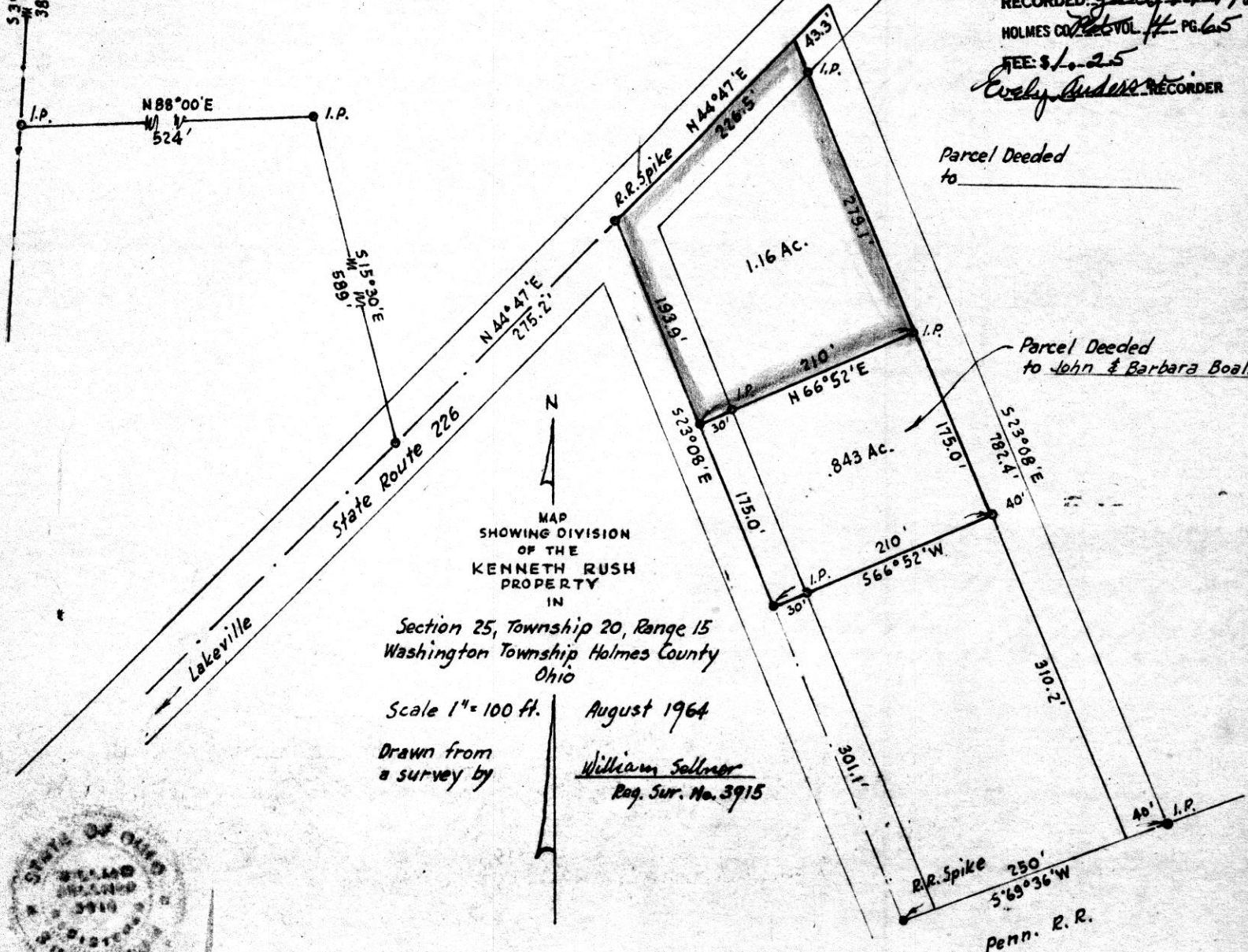
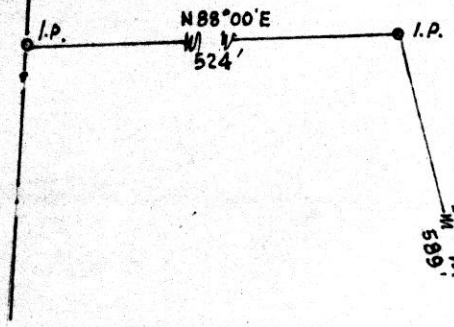
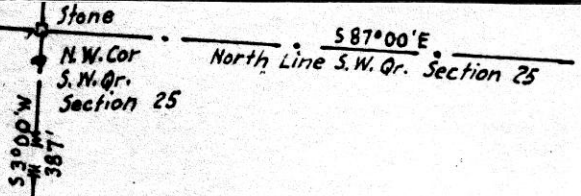
79175

RECTD: July 19-1965
AT 10:00 CLOCK A.M.
RECORDED: July 19/1965
HOLMES COUNTY VOL. # PG. 65

SEE: S.L. 25
C. A. Anderson RECORDER

Parcel Deeded to _____

Parcel Deeded to John & Barbara Boals

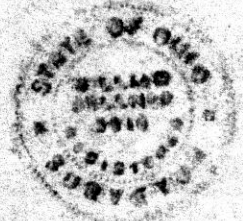


N
MAP
SHOWING DIVISION
OF THE
KENNETH RUSH
PROPERTY
IN

Section 25, Township 20, Range 15
Washington Township Holmes County
Ohio

Scale 1" = 100 ft. August 1964

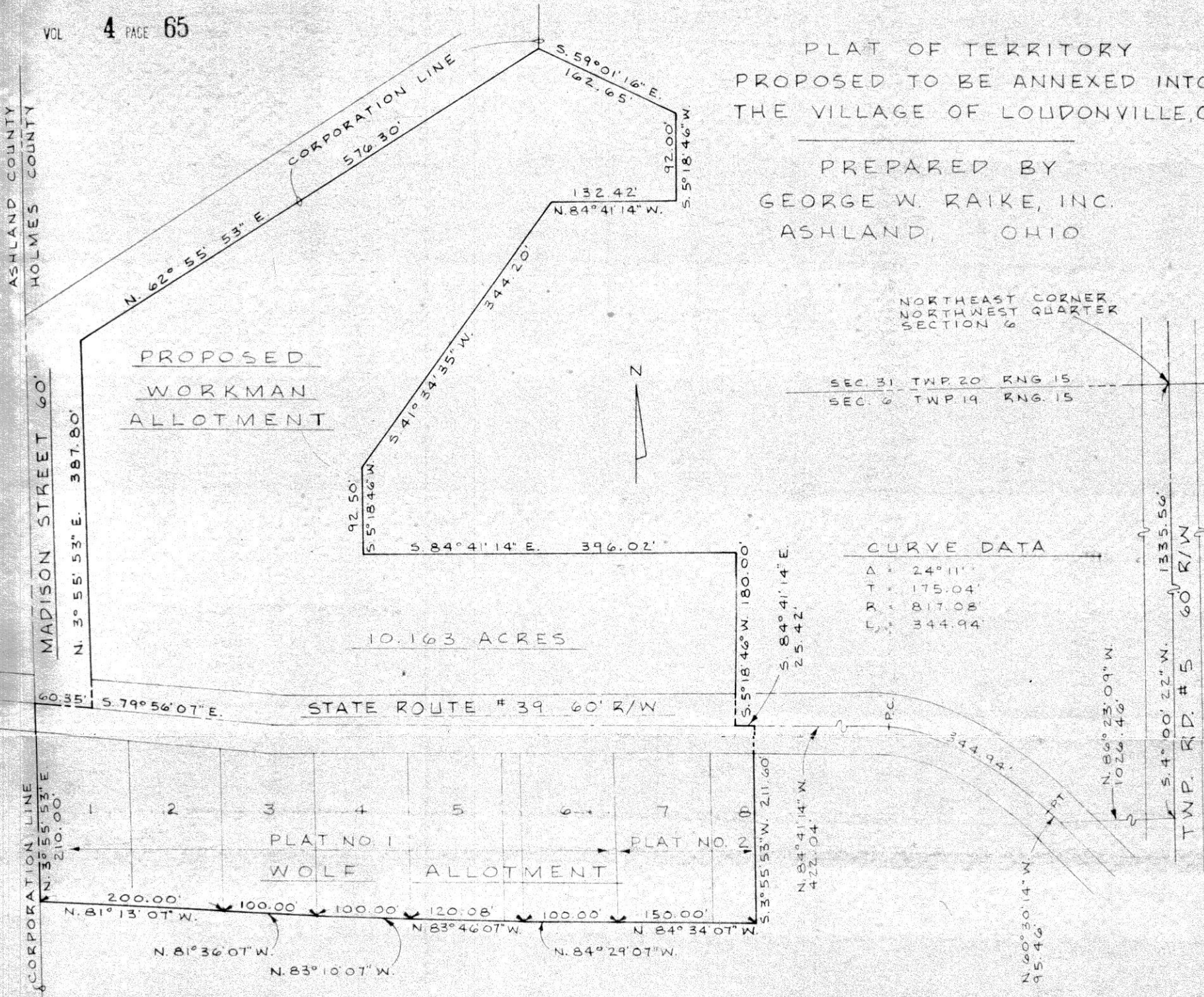
Drawn from a survey by
William Sellner
Reg. Sur. No. 3915



17 1/4 x 13 1/4

PLAT OF TERRITORY PROPOSED TO BE ANNEXED INTO THE VILLAGE OF LOUDONVILLE, O.

PREPARED BY GEORGE W. RAIKE, INC. ASHLAND, OHIO



SEC. 31 TWP. 20 RANG. 15
SEC. 6 TWP. 19 RANG. 15

CURVE DATA

Δ	24° 11'
T	175.04'
R	817.08'
L	344.94'

DESCRIPTION

SITUATED IN the Township of Washington, County of Holmes, and State of Ohio and being a part of the Northwest quarter of Section 6, Township 19, Range 15, and more fully described as follows:

Commencing at the Northeast corner of the Northwest quarter of Section 6; thence South 4° 00' 22" West, along the East line of said quarter, a distance of 1335.56 feet to a point; thence North 86° 23' 09" West a distance of 1026.46 feet to a point on the centerline of State Route #39 (60 feet wide); thence North 60° 30' 14" West, along said centerline, a distance of 95.46 feet to a point; thence Westerly, along said centerline, following a curve to the left (R=817.08 feet), with a centerline distance of 334.94 feet to a point; thence, continuing along said centerline, North 84° 41' 14" West a distance of 422.04 feet to the true place of beginning of the parcel herein described; thence South 3° 55' 53" West a distance of 211.60 feet to a point; thence North 84° 34' 07" West a distance of 150.00 feet to a point; thence North 84° 29' 07" West a distance of 100.00 feet to a point; thence North 83° 46' 07" West a distance of 120.08 feet to a point; thence North 83° 10' 07" West a distance of 100.00 feet to a point, thence North 81° 36' 07" West a distance of 100.00 feet to a point; thence North 81° 13' 07" West a distance of 200.00 feet to a point on the existing East Corporation line of the Village of Loudonville, said line also being the West line of Holmes County, thence North 3° 55' 53" East along said line a distance of 210.00 feet to a point on the centerline of State Route #39; thence South 79° 56' 07" East, along said centerline, a distance of 60.35 feet to a point; thence North 3° 55' 53" East, along the East right-of-way line of Madison Street (60 feet wide), a distance of 387.80 feet to a point; thence North 62° 55' 53" East along said right-of-way, a distance of 576.30 feet to a point; thence South 59° 01' 16" East a distance of 162.65 feet to a point; thence South 5° 18' 46" West a distance of 92.00 feet to a point; thence North 84° 41' 14" West a distance of 132.42 feet to a point; thence South 41° 34' 35" West a distance of 344.20 feet to a point; thence South 5° 18' 46" West a distance of 92.50 feet to a point; thence South 84° 41' 14" East a distance of 396.02 feet to a point; thence South 5° 18' 46" West a distance of 180.00 feet to a point on the centerline of State Route #39; thence South 84° 41' 14" East, along said centerline, a distance of 25.42 feet to the true place of beginning, containing 10.163 Acres.

SURVEYOR'S CERTIFICATION

I hereby certify that the plat shown hereon was prepared from a survey made by the office of George W. Raikes, Inc., Consulting Engineers, and Lowell E. Bender, Registered Surveyor; and from plats No. 1 and No. 2 made by Howard H. Fetzer, Registered Surveyor No. 1792, for William H. Wolf, and is a true and accurate representation of said surveys. All bearings were computed from a magnetic bearing taken on January 8, 1964, and all distances are in feet and decimals thereof.

Lowell E. Bender
Registered Surveyor No. 4776

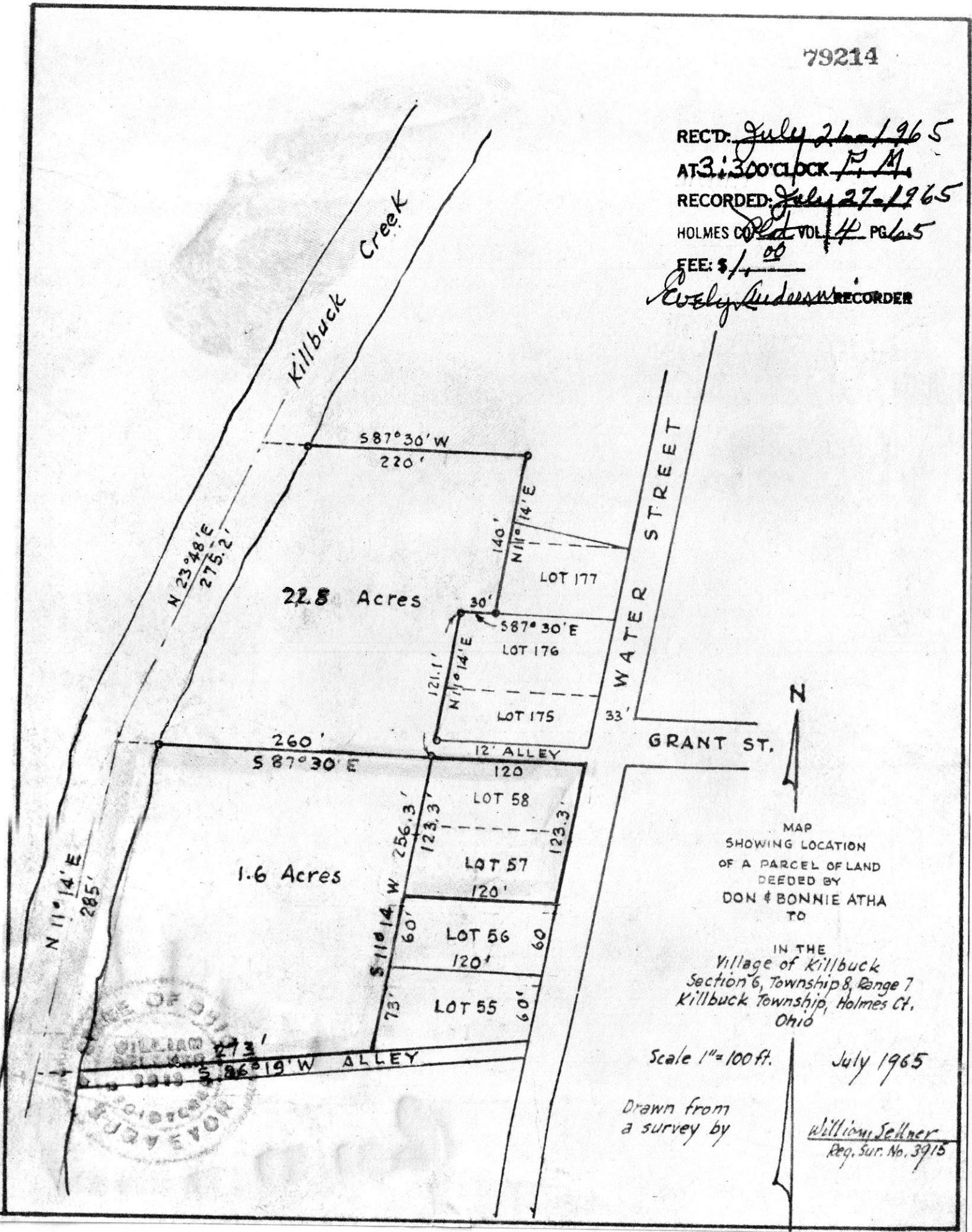
79200
 RECD July 26, 1965
 AT 2:50 O'CLOCK P.M.
 RECORDED July 27, 1965
 HOLMES CO. PART VOL. 4 PG. 65
 FEE: \$2.30
 Evelyn Anderson RECORDER



79214

REC'D: July 21, 1965
AT 3:30 O'CLOCK P.M.
RECORDED: July 27, 1965
HOLMES CO. Vol. 4 PG. 65
FEE: \$ 1.00

Evelyn Anderson RECORDER



MAP
SHOWING LOCATION
OF A PARCEL OF LAND
DEEDED BY
DON & BONNIE ATHA
TO

IN THE
Village of Killbuck
Section 6, Township 8, Range 7
Killbuck Township, Holmes Ct.
Ohio

Scale 1"=100 ft.

July 1965

Drawn from
a survey by

William Sellner
Reg. Sur. No. 3915

