

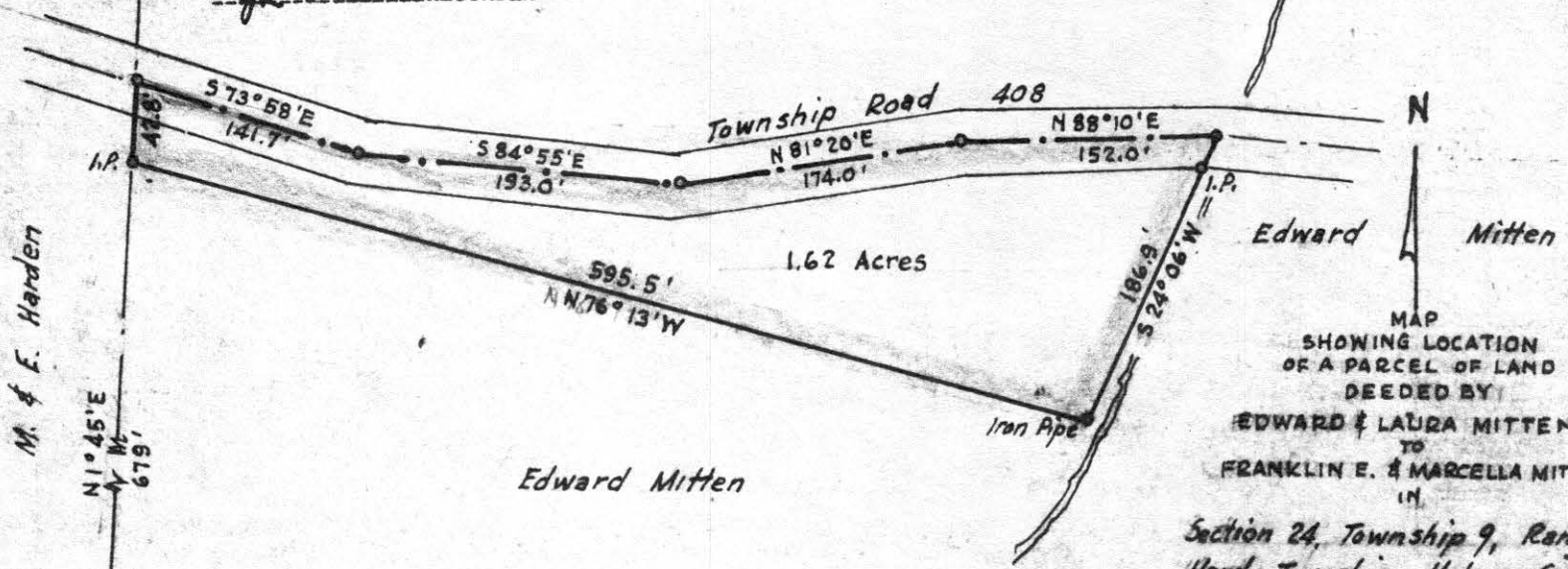
77102

REC'D: June 11, 1964  
AT 9:30.0 CLOCK A.M.  
RECORDED: June 24, 1964  
HOLMES CO. PLAT VOL. 4 PG. 22  
FEE: \$1.00

VOL 4 PAGE 22

Wally Anderson RECORDER

Edward Mitten



MAP  
SHOWING LOCATION  
OF A PARCEL OF LAND  
DEEDED BY  
EDWARD & LAURA MITTEN  
TO  
FRANKLIN E. & MARCELLA MITTEN  
IN  
Section 24, Township 9, Range 6  
Hardy Township, Holmes County  
Ohio

Scale 1" = 100 ft.

Drawn from  
a survey by

May 1964

William Sellner  
Reg. Sur. No. 3915



77106

REC'D: June 11-1964

AT 3:07 O'CLOCK P.M.

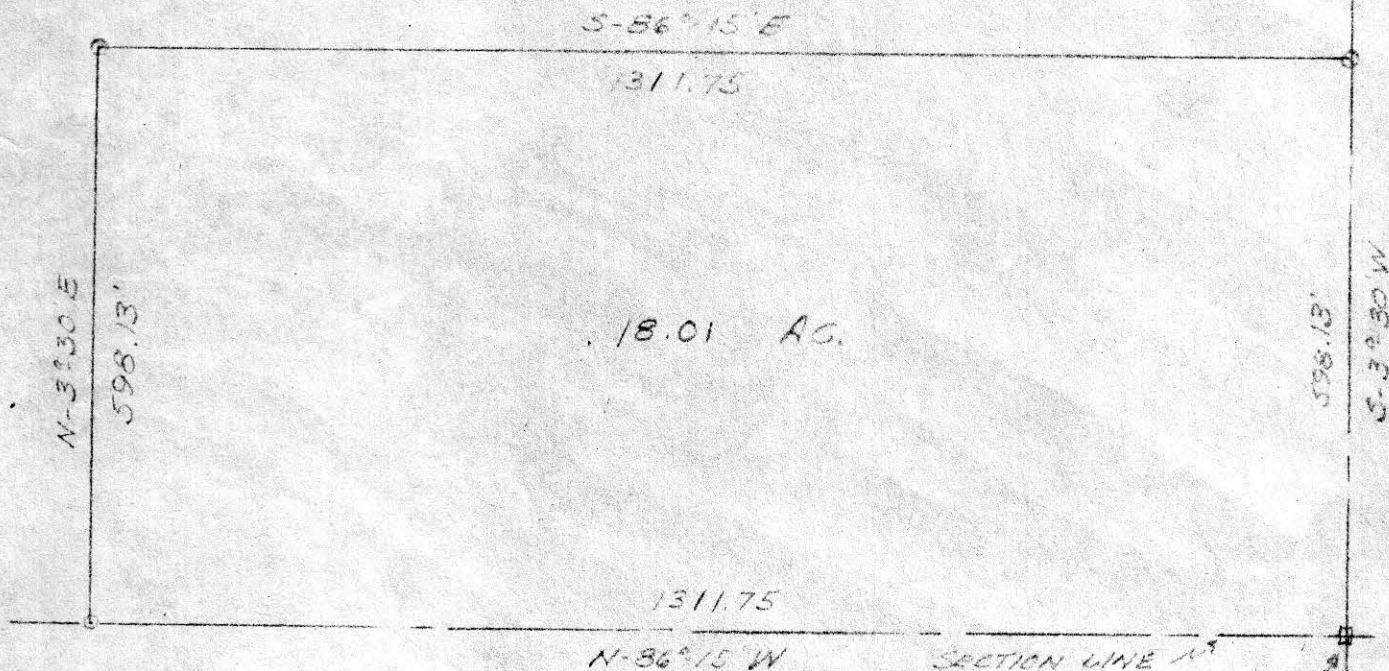
RECORDED: June 12-1964

HOLMES CO. VOL. 4 PG 22

FEE: \$1.00

*Clyde E. Purdy* RECORDER

MECHANIC TOWNSHIP  
HOLMES, COUNTY



SCALE 1"=200'

- ⊙ POST
- ⊛ STONE

S.E. COR. SW 9/4  
SEC. 9, T. 8, R. 7

I HEREBY CERTIFY THIS PLAT TO BE A CORRECT  
RETURN OF NOTES COMPILED FROM DEED DISCRPTION  
OF A 17.87 ACRE TRACT IN THE S.W. QUARTER OF SECTION  
9, TOWNSHIP 8, AND RANGE 7 IN THE COUNTY OF HOLMES  
STATE OF OHIO.

DEC 7, 1963

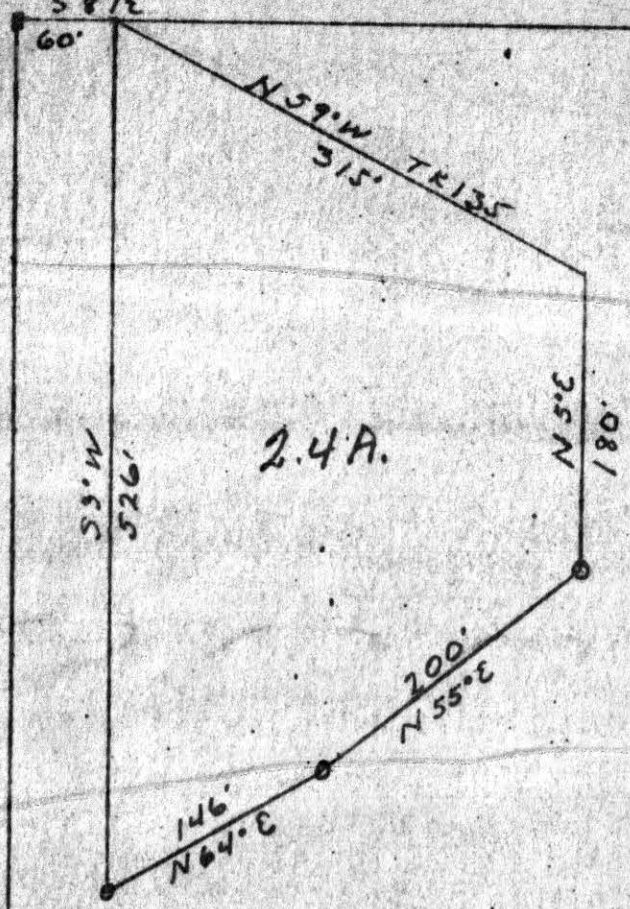
*Clyde E. Purdy*  
CLYDE E. PURDY R.S. 4900

TRACT #8

stone NW  
Corner Lot 4  
3<sup>rd</sup> Q-T 9, R 5  
S 87 E

Walnut creek Twp  
Holmes Co.

VOL 4 PAGE 22



77257

RECT. June 17-1964  
 AT 9:47 O'CLOCK  
 RECORDED: June 22, 1964  
 HOLMES CO. VOL 4 PG. 22  
 FEE: \$1.00

*Evelyn Anderson* RECORDER

I hereby certify the above to be a true  
 return of field notes of a survey of Pt of Lot  
 4, 3<sup>rd</sup> Q-T 9, R 5 Walnut creek Twp Holmes  
 County, Ohio Sept. 6-1963

Scale 1" = 100'

*Karl Snyder*  
 License 182