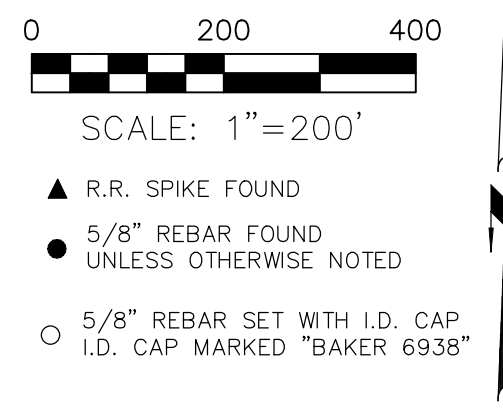


PRAIRIE TOWNSHIP
N.E., N.W., & S.W. QTRS. SECTION 36
T-14 N; R-13 W
HOLMES COUNTY, OHIO

SURVEYED FOR: ROLLIN PARROT

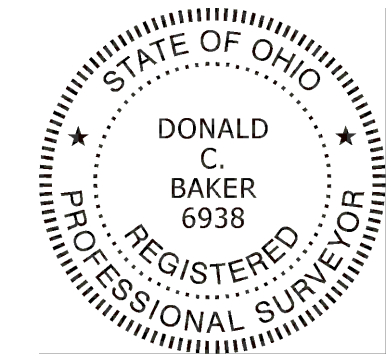
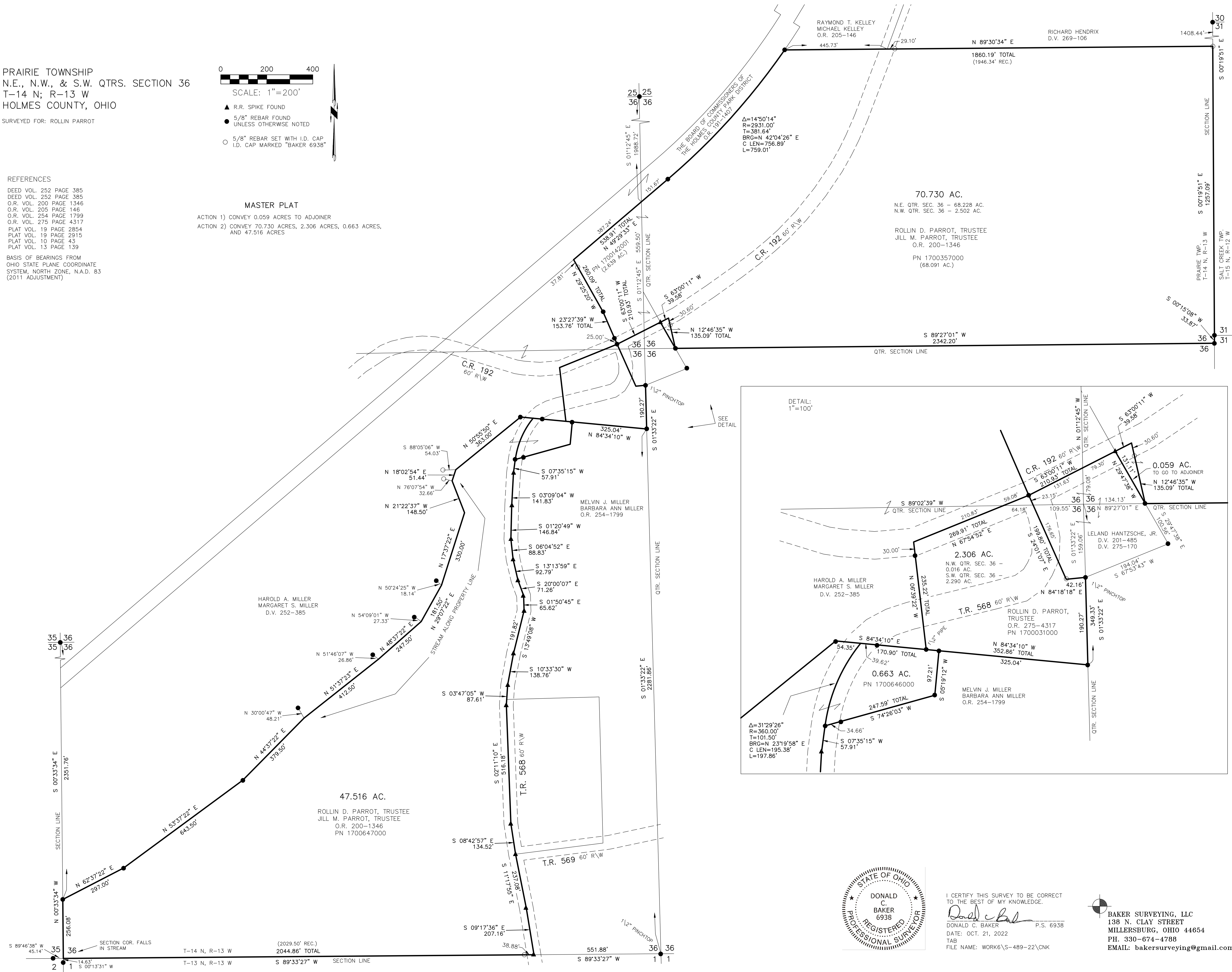
REFERENCES

DEED VOL. 252 PAGE 385
DEED VOL. 252 PAGE 385
O.R. VOL. 200 PAGE 1346
O.R. VOL. 205 PAGE 146
O.R. VOL. 254 PAGE 1799
O.R. VOL. 275 PAGE 4317
PLAT VOL. 19 PAGE 2854
PLAT VOL. 19 PAGE 2915
PLAT VOL. 10 PAGE 43
PLAT VOL. 13 PAGE 139
BASIS OF BEARINGS FROM
OHIO STATE PLANE COORDINATE
SYSTEM, NORTH ZONE, N.A.D. 83
(2011 ADJUSTMENT)

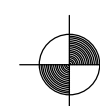


MASTER PLAT

ACTION 1) CONVEY 0.059 ACRES TO ADJOINER
ACTION 2) CONVEY 70.730 ACRES, 2.306 ACRES, 0.663 ACRES,
AND 47.516 ACRES



I CERTIFY THIS SURVEY TO BE CORRECT
TO THE BEST OF MY KNOWLEDGE.
Donald C. Baker
DONALD C. BAKER P.S. 6938
DATE: OCT. 21, 2022
TAB
FILE NAME: WORK6\S-489-22\CNK



BAKER SURVEYING, LLC
138 N. CLAY STREET
MILLERSBURG, OHIO 44654
PH. 330-674-4788
EMAIL: bakersurveying@gmail.com

202200005964
B: 2 P: 632
FILED FOR RECORD IN
HOLMES COUNTY, OH
ANITA HALL, COUNTY RECORDER
12/28/2022 02:32 PM
PLAT LARGE . 86.40
PAGES: 1
CRV 284 PG 1093
CRV 284 PG 1094

APPROVED FOR TRANSFER ONLY
NO SUBDIVISION PLAT REQUIRED
(O.R.C. 711.001 & 711.331)
Lot(s) not for building unless
approved by Board of Health
HOLMES CO. PLANNING COMMISSION
By AO Date 12/22/2022

Plat Approved
Holmes County Map Office
12/14/2022 BH