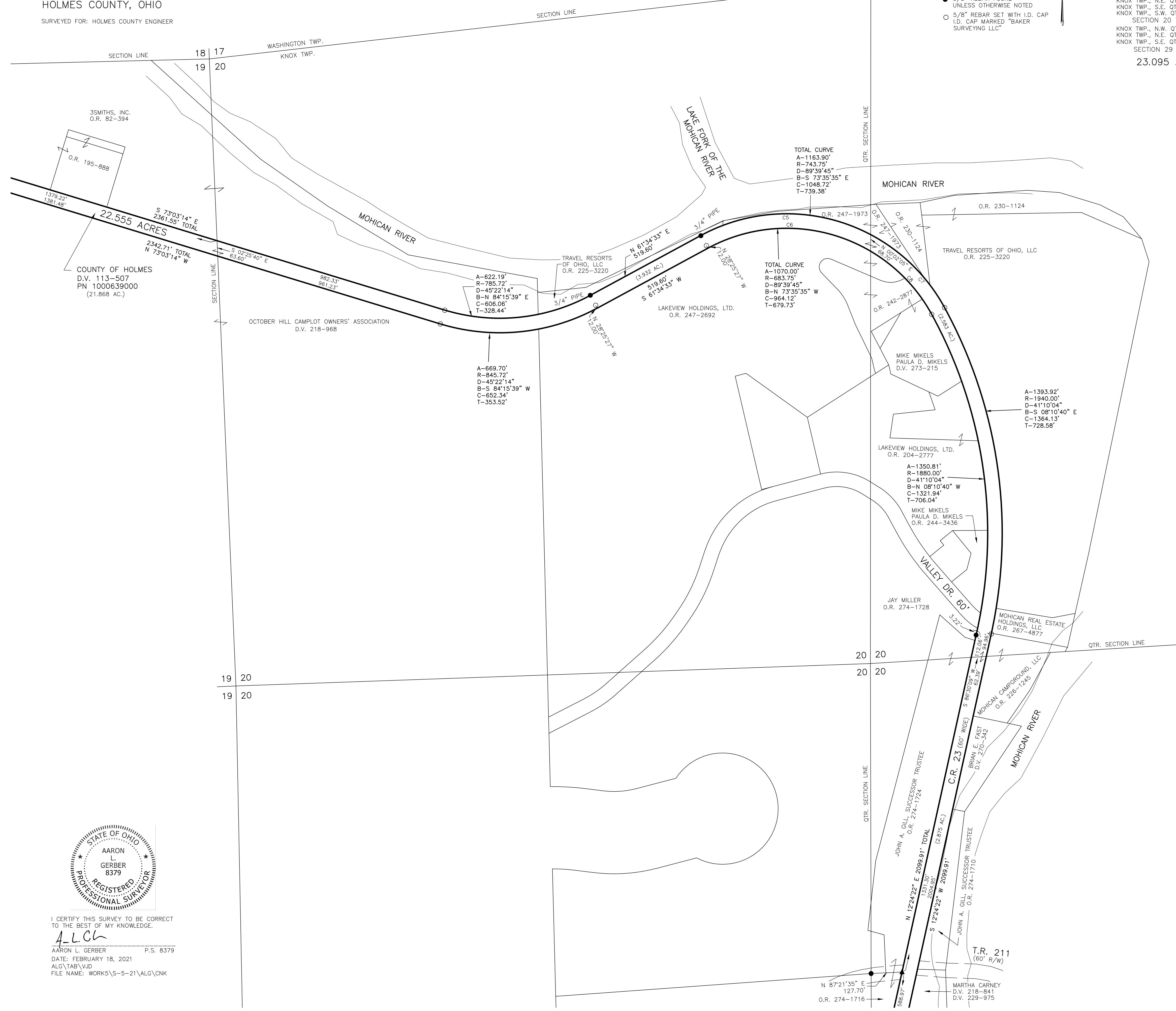
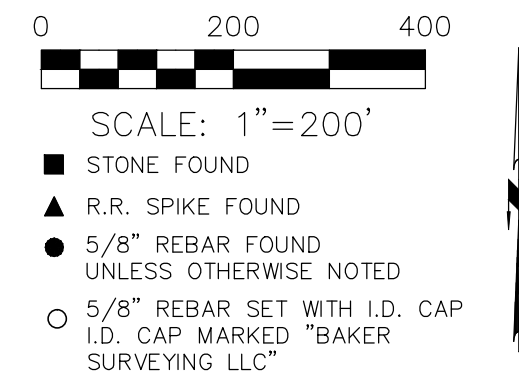


WASHINGTON TOWNSHIP  
 S.W. QTR. SECTION 18  
 T-19 N; R-15 W  
 KNOX TOWNSHIP  
 N.E. & N.W. QTRS. SECTION 19  
 N.E., N.W., S.E., & S.W. QTRS. SECTION 20  
 N.E., N.W., & S.E. QTRS. SECTION 29  
 T-19 N; R-15 W  
 HOLMES COUNTY, OHIO

SURVEYED FOR: HOLMES COUNTY ENGINEER

0.540 ACRES  
 WASHINGTON TWP., S.W. QTR. SECTION 18 - 0.540 AC.  
 22.555 ACRES  
 KNOX TWP., N.W. QTR. SECTION 19 - 3.128 AC.  
 KNOX TWP., N.E. QTR. SECTION 19 - 4.442 AC.  
 SECTION 19 TOTAL - 7.570 AC.  
 KNOX TWP., N.W. QTR. SECTION 20 - 3.932 AC.  
 KNOX TWP., N.E. QTR. SECTION 20 - 2.583 AC.  
 KNOX TWP., S.E. QTR. SECTION 20 - 2.929 AC.  
 KNOX TWP., S.W. QTR. SECTION 20 - 0.819 AC.  
 SECTION 20 TOTAL - 10.263 AC.  
 KNOX TWP., N.W. QTR. SECTION 29 - 0.093 AC.  
 KNOX TWP., N.E. QTR. SECTION 29 - 3.750 AC.  
 KNOX TWP., S.E. QTR. SECTION 29 - 0.879 AC.  
 SECTION 29 TOTAL - 4.722 AC.  
 23.095 ACRES TOTAL

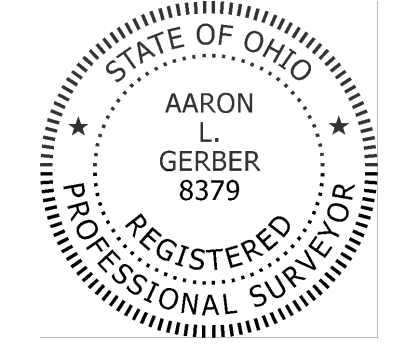
202100016380  
 B: 2 P: 622  
 FILED FOR RECORD IN  
 HOLMES COUNTY, OH  
 ANITA HALL COUNTY RECORDER  
 07/13/2021 11:06 AM  
 CNTY LG PLT. 0.00  
 PAGES: 1  
 ORV 277 PG 5981



REFERENCES

- DEED VOL. 218 PAGE 968
- DEED VOL. 273 PAGE 215
- DEED VOL. 267 PAGE 275
- DEED VOL. 229 PAGE 975
- DEED VOL. 113 PAGE 507
- O.R. VOL. 274 PAGE 1756
- O.R. VOL. 197 PAGE 3197
- O.R. VOL. 223 PAGE 1048
- O.R. VOL. 274 PAGE 3513
- O.R. VOL. 257 PAGE 4143
- O.R. VOL. 188 PAGE 1411
- O.R. VOL. 225 PAGE 3220
- O.R. VOL. 261 PAGE 6546
- O.R. VOL. 266 PAGE 3138
- O.R. VOL. 246 PAGE 3264
- O.R. VOL. 274 PAGE 1777
- O.R. VOL. 265 PAGE 91
- O.R. VOL. 269 PAGE 3551
- O.R. VOL. 274 PAGE 66
- O.R. VOL. 124 PAGE 102
- O.R. VOL. 247 PAGE 2692
- O.R. VOL. 274 PAGE 1724
- O.R. VOL. 274 PAGE 1728
- O.R. VOL. 204 PAGE 2777
- PLAT VOL. 19 PAGE 1405
- PLAT VOL. 16 PAGE 423
- PLAT VOL. 10 PAGE 655
- PLAT VOL. 19 PAGE 1380
- PLAT VOL. 19 PAGE 3714
- PLAT VOL. 19 PAGE 3206
- PLAT VOL. 19 PAGE 3052
- PLAT VOL. 19 PAGE 1783
- PLAT VOL. 9 PAGE 255
- PLAT VOL. 19 PAGE 1856
- PLAT VOL. 19 PAGE 4067
- PLAT VOL. 19 PAGE 4245
- PLAT VOL. 19 PAGE 4068
- PLAT VOL. 19 PAGE 4069
- PLAT VOL. 19 PAGE 3325
- PLAT VOL. 19 PAGE 4194
- PLAT VOL. 16 PAGE 423
- PLAT VOL. 10 PAGE 473
- PLAT VOL. 12 PAGE 911
- PLAT VOL. 13 PAGE 28
- PLAT VOL. 19 PAGE 1838
- PLAT VOL. 18 PAGE 612
- PLAT VOL. 19 PAGE 1397
- PLAT VOL. 11 PAGE 1
- PLAT VOL. 13 PAGE 27
- PLAT VOL. 12 PAGE 703
- PLAT VOL. 19 PAGE 1126
- PLAT VOL. 9 PAGE 194
- PLAT VOL. 2 PAGE 606
- PLAT VOL. 3 PAGE 638
- PLAT VOL. 13 PAGE 26
- PLAT VOL. 5 PAGE 83
- PLAT VOL. 7 PAGE 407
- PLAT VOL. 3 PAGE 318
- PLAT VOL. 19 PAGE 3552
- PLAT VOL. 19 PAGE 4180
- PLAT VOL. 14 PAGE 86
- PLAT VOL. 14 PAGE 701
- PLAT VOL. 16 PAGE 370
- PLAT VOL. 19 PAGE 690
- UNRECORDED SURVEY BY JAMIE D. DARR DATED MARCH 25, 2002
- ASHLAND CO. SURVEY BY JAMIE E. KENYON DATED JUNE 18, 2011
- BASIS OF BEARINGS FROM OHIO STATE PLANE
- COORDINATE SYSTEM, NORTH ZONE, N.A.D. 83

CURVE	DELTA	RADIUS	CHORD BEARING	CHORD	ARC	TANGENT
C1	3°40'02"	5700.00'	S 73°15'38" E	364.77'	364.83'	182.48'
C2	2°04'27"	5760.00'	N 72°27'51" W	208.51'	208.52'	104.27'
C3	13°35'10"	5700.00'	S 81°53'14" E	1348.43'	1351.61'	678.99'
C4	15°10'46"	5760.00'	N 81°05'27" W	1521.53'	1525.99'	767.49'
C5	56°17'41"	743.75'	N 89°43'23" E	701.72'	730.76'	397.92'
C6	58°59'02"	683.75'	N 88°55'56" W	673.22'	703.90'	386.72'
C7	33°22'04"	743.75'	S 45°28'44" E	427.05'	433.14'	222.91'
C8	30°40'43"	683.75'	N 44°06'04" W	361.75'	366.11'	187.56'
C9	10°56'45"	1880.00'	S 06°55'59" W	358.61'	359.16'	180.13'
C10	3°07'44"	1880.00'	S 00°06'15" E	102.66'	102.67'	51.35'
C11	7°46'36"	1880.00'	S 05°33'25" E	254.97'	255.17'	127.78'
C12	21°40'19"	1940.00'	N 01°34'12" E	729.43'	733.80'	371.34'
C13	6°05'53"	1940.00'	N 12°18'54" W	206.38'	206.48'	103.34'
C14	11°51'35"	1940.00'	N 21°17'38" W	400.85'	401.56'	201.50'
C15	7°16'29"	1462.00'	S 76°41'28" E	185.50'	185.63'	92.94'
C16	12°18'49"	1402.00'	N 79°12'38" W	300.73'	301.31'	151.24'
C17	17°46'42"	1880.00'	S 18°20'04" E	581.01'	583.34'	294.03'



I CERTIFY THIS SURVEY TO BE CORRECT TO THE BEST OF MY KNOWLEDGE.  
 A.L.G.  
 AARON L. GERBER P.S. 8379  
 DATE: FEBRUARY 18, 2021  
 ALG\TAB\VID  
 FILE NAME: WORKS\5-5-21\ALG\CNK

APPROVED FOR TRANSFER ONLY  
 NO SUBDIVISION PLAT REQUIRED  
 (O.R.C. 713.00 & 713.13)  
 (not) not for building unless approved by Board of Health  
 HOLMES CO. PLANNING COMMISSION  
 By: AO Date: 7/13/2021

Plat Approved  
 Holmes County Map Office  
 7/1/2021 BH

BAKER SURVEYING, LLC  
 138 N. CLAY STREET  
 MILLERSBURG, OHIO 44654  
 PH. 330-674-4788  
 EMAIL: bakersurveying@gmail.com