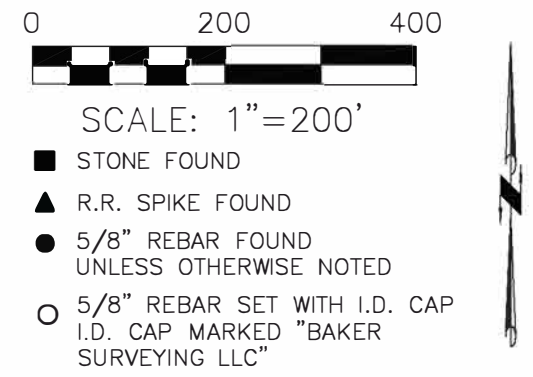


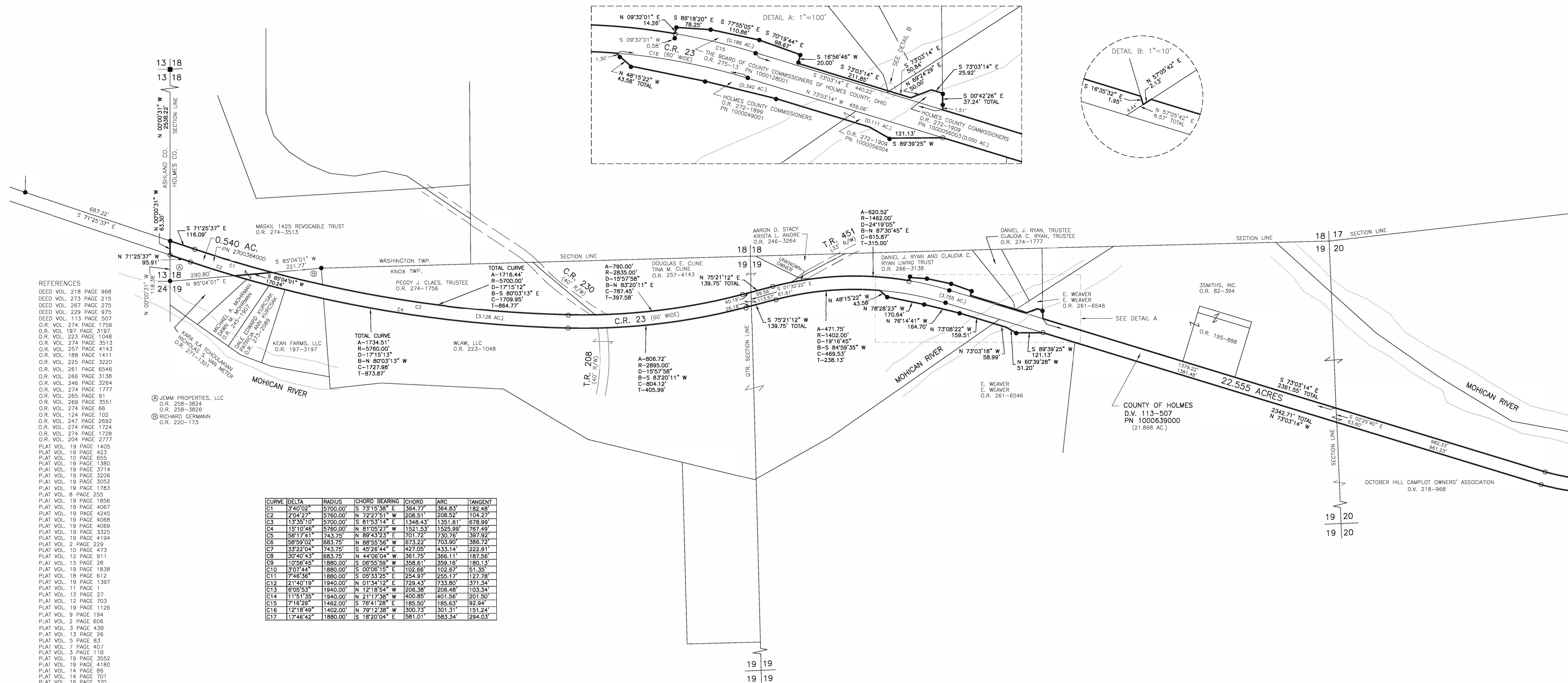
WASHINGTON TOWNSHIP
S.W. QTR. SECTION 18
T-19 N; R-15 W
KNOX TOWNSHIP
N.E. & N.W. QTRS. SECTION 19
N.E., N.W., S.E., & S.W. QTRS. SECTION 20
N.E., N.W., & S.E. QTRS. SECTION 29
T-19 N; R-15 W
HOLMES COUNTY, OHIO

SURVEYED FOR: HOLMES COUNTY ENGINEER



0.540 ACRES
WASHINGTON TWP., S.W. QTR. SECTION 18 - 0.540 AC.
22.555 ACRES
KNOX TWP., N.W. QTR. SECTION 19 - 3.128 AC.
KNOX TWP., N.E. QTR. SECTION 19 - 4.442 AC.
SECTION 19 TOTAL - 7.570 AC.
KNOX TWP., N.W. QTR. SECTION 20 - 3.932 AC.
KNOX TWP., N.E. QTR. SECTION 20 - 2.583 AC.
KNOX TWP., S.E. QTR. SECTION 20 - 2.929 AC.
KNOX TWP., S.W. QTR. SECTION 20 - 0.819 AC.
SECTION 20 TOTAL - 10.263 AC.
KNOX TWP., N.W. QTR. SECTION 29 - 0.093 AC.
KNOX TWP., N.E. QTR. SECTION 29 - 3.750 AC.
KNOX TWP., S.E. QTR. SECTION 29 - 0.879 AC.
SECTION 29 TOTAL - 4.722 AC.
23.095 ACRES TOTAL

202100016379
B: 2 P: 621
FILED FOR RECORD IN
HOLMES COUNTY, OH
ANITA HALL, COUNTY RECORDER
07/13/2021 11:06 AM
CNTY LG PLT. 0.00
PAGES: 1
ORV 2.77 PG 5981



- REFERENCES
- DEED VOL. 218 PAGE 968
 - DEED VOL. 273 PAGE 215
 - DEED VOL. 267 PAGE 275
 - DEED VOL. 229 PAGE 975
 - DEED VOL. 113 PAGE 507
 - O.R. VOL. 274 PAGE 1756
 - O.R. VOL. 187 PAGE 3197
 - O.R. VOL. 223 PAGE 1048
 - O.R. VOL. 274 PAGE 3513
 - O.R. VOL. 257 PAGE 4143
 - O.R. VOL. 188 PAGE 1411
 - O.R. VOL. 225 PAGE 3220
 - O.R. VOL. 261 PAGE 6546
 - O.R. VOL. 266 PAGE 3138
 - O.R. VOL. 246 PAGE 3264
 - O.R. VOL. 274 PAGE 1777
 - O.R. VOL. 265 PAGE 91
 - O.R. VOL. 269 PAGE 3551
 - O.R. VOL. 274 PAGE 66
 - O.R. VOL. 124 PAGE 102
 - O.R. VOL. 247 PAGE 2692
 - O.R. VOL. 274 PAGE 1724
 - O.R. VOL. 274 PAGE 1728
 - O.R. VOL. 204 PAGE 2777
 - PLAT VOL. 19 PAGE 1405
 - PLAT VOL. 16 PAGE 423
 - PLAT VOL. 10 PAGE 655
 - PLAT VOL. 19 PAGE 1380
 - PLAT VOL. 19 PAGE 3714
 - PLAT VOL. 19 PAGE 3206
 - PLAT VOL. 19 PAGE 3052
 - PLAT VOL. 19 PAGE 1783
 - PLAT VOL. 8 PAGE 255
 - PLAT VOL. 19 PAGE 1856
 - PLAT VOL. 19 PAGE 4067
 - PLAT VOL. 19 PAGE 4245
 - PLAT VOL. 19 PAGE 4068
 - PLAT VOL. 19 PAGE 4069
 - PLAT VOL. 19 PAGE 3325
 - PLAT VOL. 19 PAGE 4194
 - PLAT VOL. 2 PAGE 229
 - PLAT VOL. 10 PAGE 473
 - PLAT VOL. 12 PAGE 911
 - PLAT VOL. 13 PAGE 28
 - PLAT VOL. 19 PAGE 1838
 - PLAT VOL. 18 PAGE 612
 - PLAT VOL. 19 PAGE 1397
 - PLAT VOL. 11 PAGE 1
 - PLAT VOL. 13 PAGE 27
 - PLAT VOL. 12 PAGE 703
 - PLAT VOL. 19 PAGE 1126
 - PLAT VOL. 9 PAGE 194
 - PLAT VOL. 2 PAGE 606
 - PLAT VOL. 3 PAGE 438
 - PLAT VOL. 13 PAGE 26
 - PLAT VOL. 5 PAGE 63
 - PLAT VOL. 7 PAGE 407
 - PLAT VOL. 3 PAGE 118
 - PLAT VOL. 19 PAGE 3552
 - PLAT VOL. 19 PAGE 4180
 - PLAT VOL. 14 PAGE 86
 - PLAT VOL. 14 PAGE 701
 - PLAT VOL. 16 PAGE 370
 - PLAT VOL. 19 PAGE 690
 - UNRECORDED SURVEY BY JAMIE D. DARR DATED MARCH 25, 2002
 - ASHLAND CO. SURVEY BY JAMES E. KENYON DATED JUNE 18, 2011

CURVE DELTA	RADIUS	CHORD BEARING	CHORD	ARC	TANGENT
C1	340.02'	S 73°15'38" E	364.77'	364.83'	182.48'
C2	204.27'	S 72°27'51" W	208.51'	208.52'	104.27'
C3	13°35'10"	S 81°53'14" E	1348.43'	1351.61'	678.99'
C4	15°10'46"	N 81°05'27" W	1521.53'	1525.99'	767.49'
C5	56°17'41"	N 89°43'23" E	701.72'	730.76'	397.92'
C6	58°59'02"	N 88°55'56" W	673.22'	703.90'	386.72'
C7	33°22'04"	S 43°28'44" E	427.05'	433.14'	222.91'
C8	30°40'43"	S 44°08'04" W	361.75'	366.11'	187.56'
C9	10°56'45"	S 06°55'59" W	358.61'	359.16'	180.13'
C10	3°07'44"	S 00°06'15" E	102.66'	102.67'	51.35'
C11	7°46'36"	S 05°33'25" E	254.97'	255.17'	127.78'
C12	21°40'19"	N 01°34'12" E	729.43'	733.80'	371.34'
C13	6°05'53"	N 12°18'54" W	208.38'	208.48'	103.34'
C14	11°51'35"	N 21°17'38" W	400.85'	401.56'	201.50'
C15	7°16'29"	S 76°41'28" E	185.50'	185.63'	92.94'
C16	12°18'49"	N 79°12'38" W	300.73'	301.31'	151.24'
C17	17°46'42"	S 18°20'04" E	581.01'	583.34'	294.03'



I CERTIFY THIS SURVEY TO BE CORRECT TO THE BEST OF MY KNOWLEDGE.
A.L.C.
AARON L. GERBER P.S. 8379
DATE: FEBRUARY 18, 2021
ALG:\TAB\VDJ
FILE NAME: WORKS\5-5-21\ALG\CNK

BAKER SURVEYING, LLC
138 N. CLAY STREET
MILLERSBURG, OHIO 44654
PH. 330-674-4788
EMAIL: bakersurveying@gmail.com

APPROVED FOR TRANSFER ONLY
NO SUBDIVISION PLAT REQUIRED
(O.R.C. 713.003 & 713.131)
Lot(s) not for building unless approved by Board of Health
HOLMES CO. PLANNING COMMISSION
By: AO Date: 7/13/2021

Plat Approved
Holmes County Map Office
7/1/2021 BH