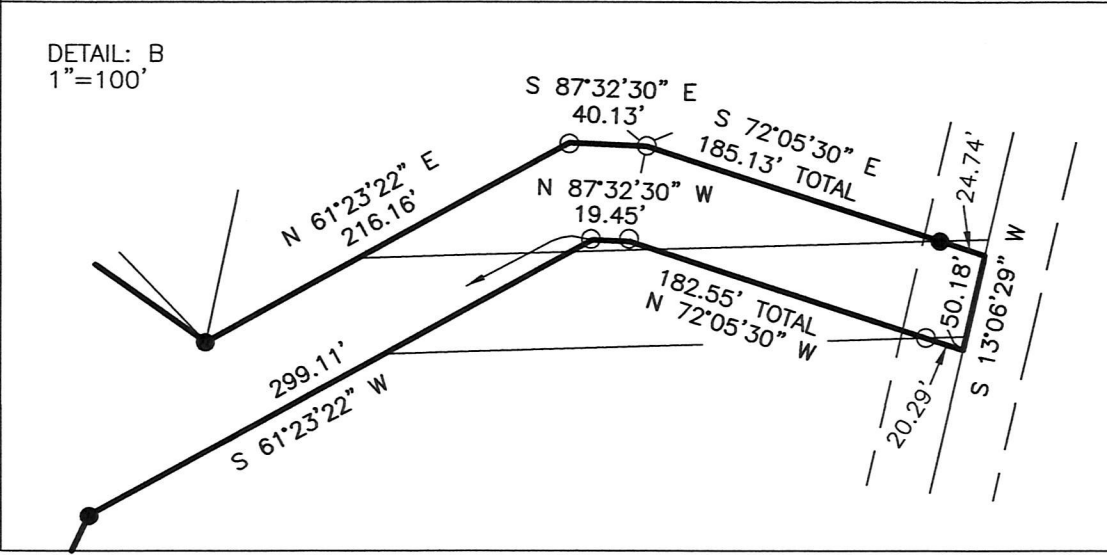
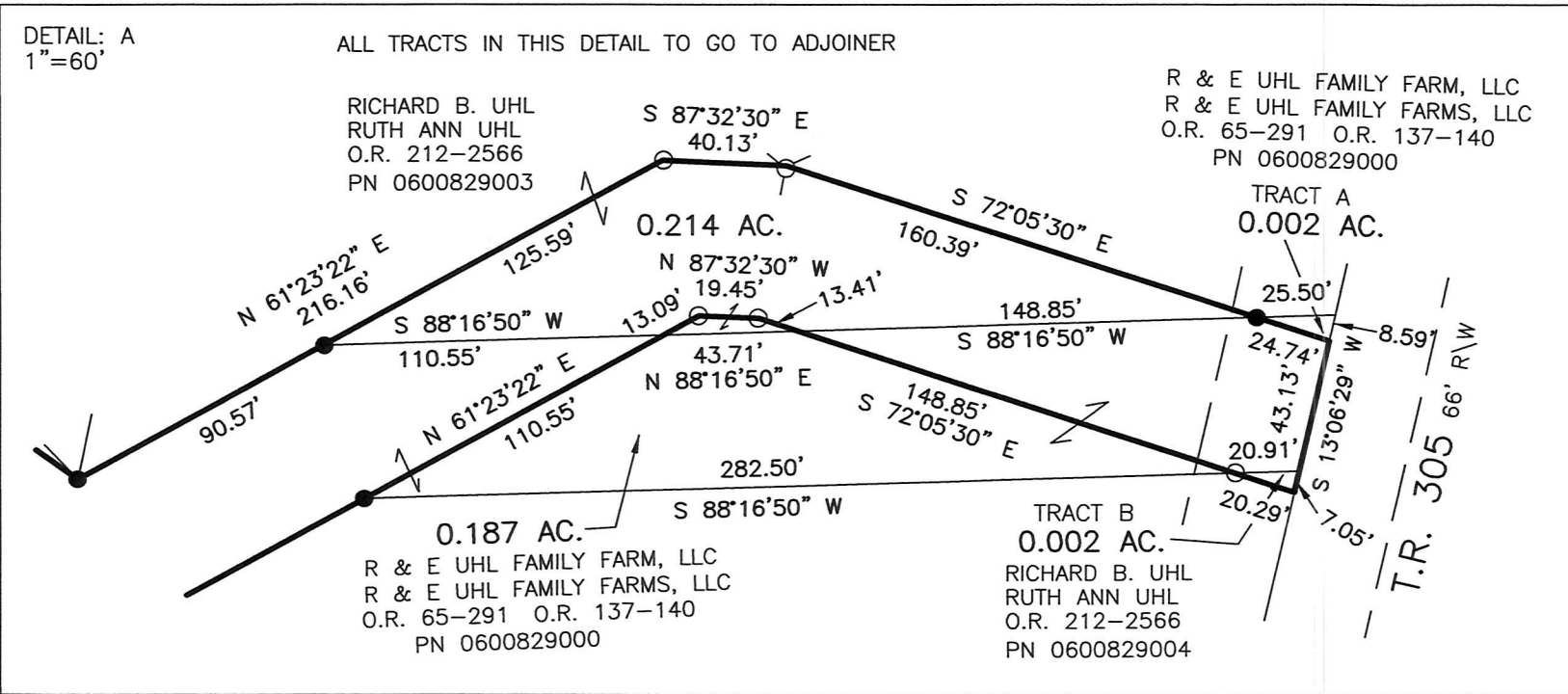


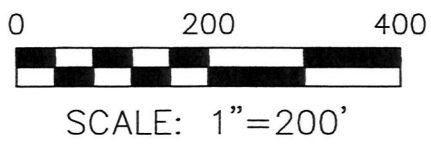
ORV 209 page 170
 ORV 209 page 173
 ORV 209 page 177



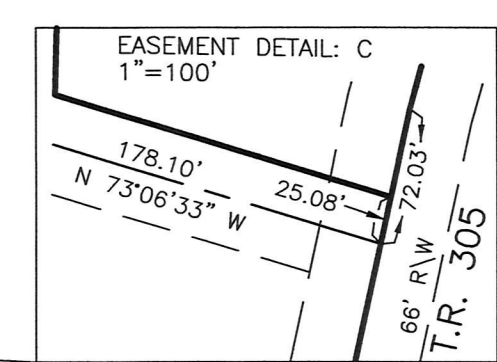
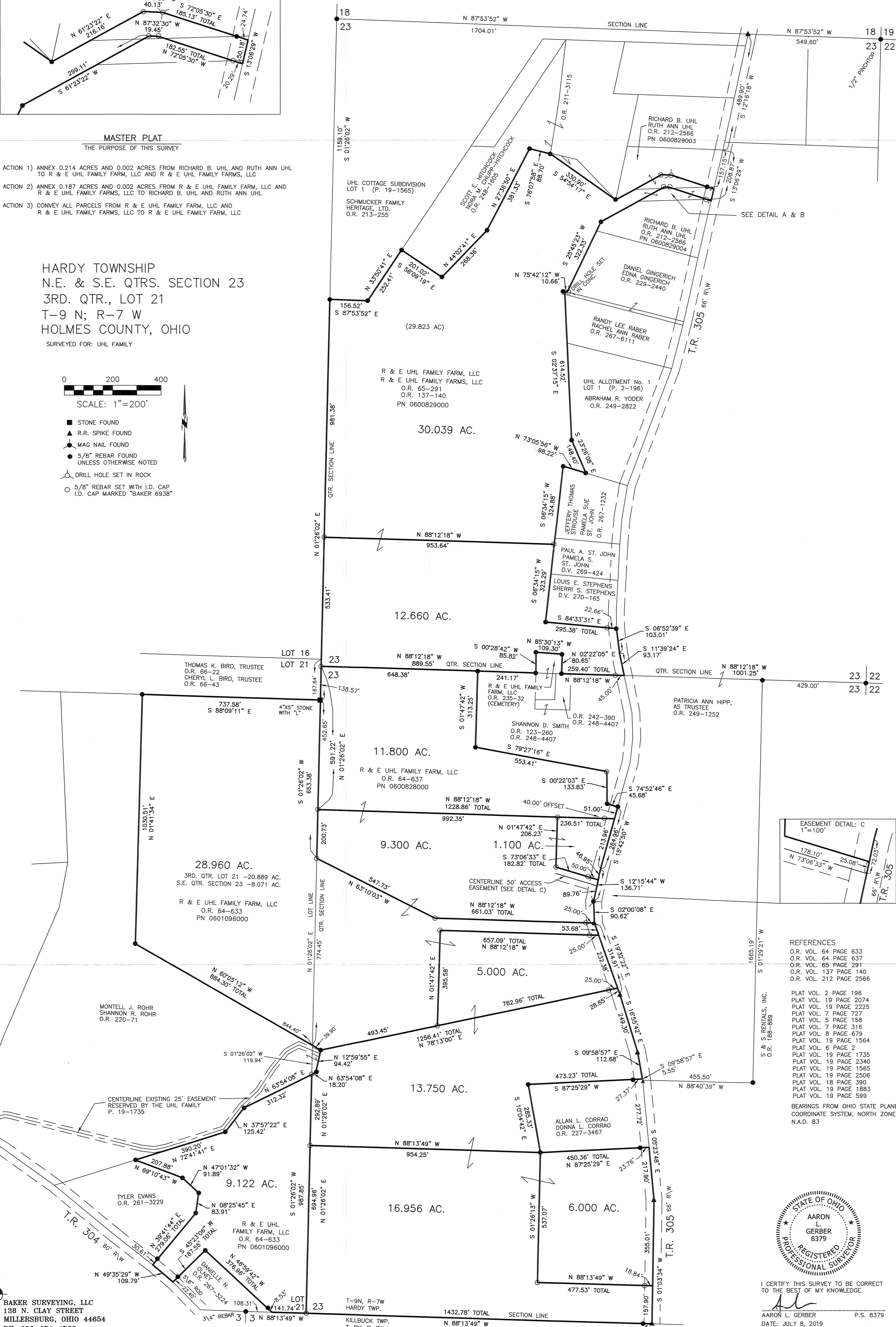
MASTER PLAT
 THE PURPOSE OF THIS SURVEY

- ACTION 1) ANNEX 0.214 ACRES AND 0.002 ACRES FROM RICHARD B. UHL AND RUTH ANN UHL TO R & E UHL FAMILY FARM, LLC AND R & E UHL FAMILY FARMS, LLC
- ACTION 2) ANNEX 0.187 ACRES AND 0.002 ACRES FROM R & E UHL FAMILY FARM, LLC AND R & E UHL FAMILY FARMS, LLC TO RICHARD B. UHL AND RUTH ANN UHL
- ACTION 3) CONVEY ALL PARCELS FROM R & E UHL FAMILY FARM, LLC AND R & E UHL FAMILY FARMS, LLC TO R & E UHL FAMILY FARM, LLC

HARDY TOWNSHIP
 N.E. & S.E. QTRS. SECTION 23
 3RD. QTR., LOT 1
 T-9 N; R-7 W
 HOLMES COUNTY, OHIO
 SURVEYED FOR: UHL FAMILY



- STONE FOUND
- ▲ R.R. SPIKE FOUND
- MAG NAIL FOUND
- 5/8" REBAR FOUND UNLESS OTHERWISE NOTED
- DRILL HOLE SET IN ROCK
- 5/8" REBAR SET WITH I.D. CAP I.D. CAP MARKED "BAKER 6938"



- REFERENCES
- O.R. VOL. 64 PAGE 633
 - O.R. VOL. 64 PAGE 637
 - O.R. VOL. 85 PAGE 291
 - O.R. VOL. 137 PAGE 140
 - O.R. VOL. 212 PAGE 2566

- PLAT VOL. 2 PAGE 196
 PLAT VOL. 19 PAGE 2074
 PLAT VOL. 19 PAGE 2225
 PLAT VOL. 7 PAGE 727
 PLAT VOL. 5 PAGE 158
 PLAT VOL. 7 PAGE 316
 PLAT VOL. 8 PAGE 679
 PLAT VOL. 19 PAGE 1564
 PLAT VOL. 6 PAGE 2
 PLAT VOL. 19 PAGE 1735
 PLAT VOL. 19 PAGE 2340
 PLAT VOL. 19 PAGE 1565
 PLAT VOL. 18 PAGE 2506
 PLAT VOL. 19 PAGE 1883
 PLAT VOL. 19 PAGE 589

BEARINGS FROM OHIO STATE PLANE COORDINATE SYSTEM, NORTH ZONE, N.A.D. 83

APPROVED FOR TRANSFER ONLY
 NO SUBDIVISION PLAT REQUIRED
 (O.R.C. 711.001 & 711.131)
 (O.R.C. not to be binding unless
 approved by Board of Health.)
 HOLMES CO. PLANNING COMMISSION
 By: _____ Date: 8/17/19



I CERTIFY THIS SURVEY TO BE CORRECT TO THE BEST OF MY KNOWLEDGE.

AARON L. GERBER P.S. 8379
 DATE: JULY 8, 2019
 ALG/BLT
 FILE NAME: WORKS5-S-328-19

PLAT APPROVED

8/20/2019