

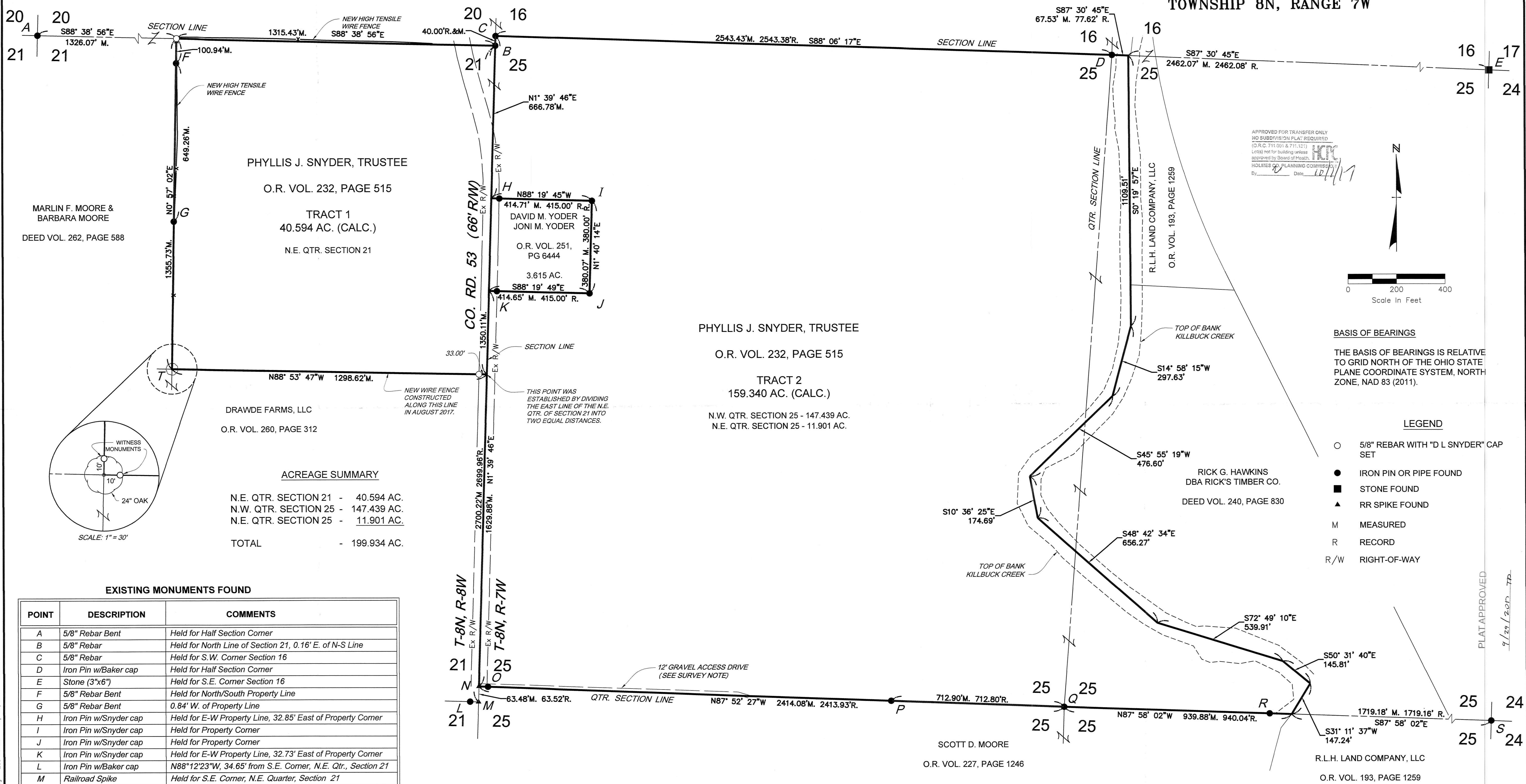
RETRACEMENT SURVEY

KILLBUCK TOWNSHIP, COUNTY OF HOLMES, STATE OF OHIO
PART OF THE N.E. QTR. SECTION 21
TOWNSHIP 8N, RANGE 8W
PART OF THE N.W. AND N.E. QTRS. SECTION 25
TOWNSHIP 8N, RANGE 7W

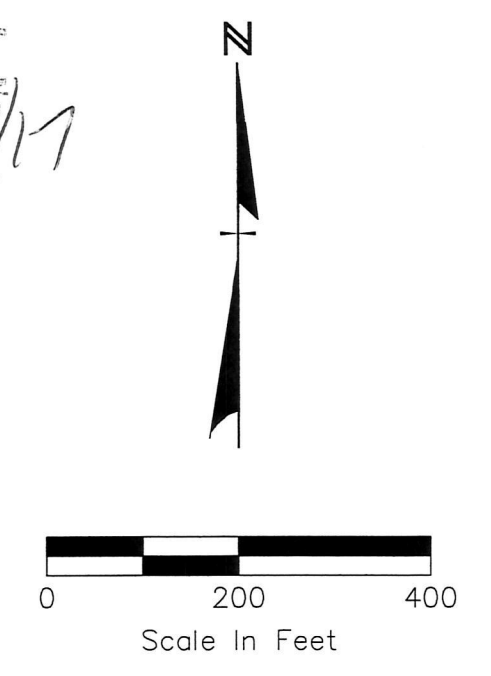
201700107473
B: 2 P: 565
FILED FOR RECORD IN
HOLMES COUNTY, OH
ANITA HALL, COUNTY RECORDER
10/18/2017 09:55 AM
PLAT LARGE: 36.40
PAGES: 1

ORV 261 PG 5901
MARLIN F. MOORE & BARBARA MOORE
DEED VOL. 262, PAGE 588

MARLIN F. MOORE & BARBARA MOORE
DEED VOL. 262, PAGE 588



APPROVED FOR TRANSFER ONLY
NO SUBDIVISION PLAT REQUIRED
(O.R.C. 171.091 & 171.121)
Lots) not for building unless
approved by Board of Health,
HOLMES CO. PLANNING COMMISSION
By: _____ Date: 10/11/17



BASIS OF BEARINGS
THE BASIS OF BEARINGS IS RELATIVE TO GRID NORTH OF THE OHIO STATE PLANE COORDINATE SYSTEM, NORTH ZONE, NAD 83 (2011).

- LEGEND**
- 5/8" REBAR WITH "D L SNYDER" CAP SET
 - IRON PIN OR PIPE FOUND
 - STONE FOUND
 - ▲ RR SPIKE FOUND
 - M MEASURED
 - R RECORD
 - R/W RIGHT-OF-WAY

PHYLLIS J. SNYDER, TRUSTEE
O.R. VOL. 232, PAGE 515
TRACT 1
40.594 AC. (CALC.)
N.E. QTR. SECTION 21

PHYLLIS J. SNYDER, TRUSTEE
O.R. VOL. 232, PAGE 515
TRACT 2
159.340 AC. (CALC.)
N.W. QTR. SECTION 25 - 147.439 AC.
N.E. QTR. SECTION 25 - 11.901 AC.

DRAWDE FARMS, LLC
O.R. VOL. 260, PAGE 312

RICK G. HAWKINS
DBA RICK'S TIMBER CO.
DEED VOL. 240, PAGE 830

SCOTT D. MOORE
O.R. VOL. 227, PAGE 1246

R.L.H. LAND COMPANY, LLC
O.R. VOL. 193, PAGE 1259

ACREAGE SUMMARY

N.E. QTR. SECTION 21	- 40.594 AC.
N.W. QTR. SECTION 25	- 147.439 AC.
N.E. QTR. SECTION 25	- 11.901 AC.
TOTAL	- 199.934 AC.

EXISTING MONUMENTS FOUND

POINT	DESCRIPTION	COMMENTS
A	5/8" Rebar Bent	Held for Half Section Corner
B	5/8" Rebar	Held for North Line of Section 21, 0.16' E. of N-S Line
C	5/8" Rebar	Held for S.W. Corner Section 16
D	Iron Pin w/Baker cap	Held for Half Section Corner
E	Stone (3"x6")	Held for S.E. Corner Section 16
F	5/8" Rebar Bent	Held for North/South Property Line
G	5/8" Rebar Bent	0.84' W. of Property Line
H	Iron Pin w/Snyder cap	Held for E-W Property Line, 32.85' East of Property Corner
I	Iron Pin w/Snyder cap	Held for Property Corner
J	Iron Pin w/Snyder cap	Held for Property Corner
K	Iron Pin w/Snyder cap	Held for E-W Property Line, 32.73' East of Property Corner
L	Iron Pin w/Baker cap	N88°12'23"W, 34.65' from S.E. Corner, N.E. Qtr., Section 21
M	Railroad Spike	Held for S.E. Corner, N.E. Quarter, Section 21
N	Railroad Spike	Held for S.W. Corner, N.W. Quarter, Section 25
O	Iron Pin w/Baker cap	S87°57'10"E, 37.24' from S.W. Corner, N.W. Qtr., Section 25
P	5/8" Rebar	On Line
Q	5/8" Rebar	Held for Center of Section 25
R	Iron Pin w/Baker cap	0.03' North of Quarter Section Line
S	5/8" Rebar	Held for S.E. Corner, N.E. Quarter, Section 25
T	24" Oak Tree	Held for Property Corner

REFERENCES

- PLAT VOL. 15, PAGE 7
- PLAT VOL. 15, PAGE 18
- PLAT VOL. 17, PAGE 49
- PLAT VOL. 18, PAGE 684
- PLAT VOL. 19, PAGE 864
- PLAT VOL. 19, PAGE 1202
- PLAT VOL. 19, PAGE 1869

SURVEY NOTE:

THE ACCESS DRIVE ALONG THE SOUTH LINE OF TRACT 2 (159.340 AC.) IS FOR THE SCOTT MOORE PROPERTY TO THE SOUTH. NO WRITTEN EASEMENT, AGREEMENT OR DOCUMENT EXISTS ALLOWING THIS DRIVE ON THE SUBJECT PROPERTY. HOWEVER, PRESCRIPTIVE RIGHTS MAY HAVE DEVELOPED DUE TO LONG TERM ACQUIESCENCE BY THE PROPERTY OWNERS OF THE SUBJECT PROPERTY.

I HEREBY CERTIFY THAT I HAVE SURVEYED THE LAND SHOWN ON THIS PLAT, AND THAT THIS PLAT IS A CORRECT REPRESENTATION OF THE LAND SURVEYED IN APRIL AND MAY 2017, AND THAT I HAVE FOUND OR SET THE PINS AND MONUMENTS SHOWN ON THIS MAP OF SURVEY.

D. Lynn Snyder
D. LYNN SNYDER P.S. 7287

9/25/17
DATE



ENGINEERING ASSOCIATES, INC.
1935 EAGLE PASS - WOOSTER OHIO 44691
TELEPHONE: (330) 345-6556
FAX: (330) 345-8077