

WASHINGTON TOWNSHIP
N.E. & S.E. QTRS. SECTION 9
S.W. QTR. SECTION 10
T-19 N; R-15 W
HOLMES COUNTY, OHIO

SURVEYED FOR: GEORGE HAUDENSCHILD

PATRICK E. and AMANDA J. LIPPS
D.V. 234-581
D.V. 264-441

REFERENCES

DEED VOL. 52 PAGE 79 PLAT VOL. 8 PAGE 400
DEED VOL. 149 PAGE 341 PLAT VOL. 16 PAGE 613
DEED VOL. 177 PAGE 305 PLAT VOL. 17 PAGES 26 & 317
DEED VOL. 230 PAGE 379 PLAT VOL. 18 PAGE 74
DEED VOL. 282 PAGE 156 PLAT VOL. 19 PAGES 121, 930, 1270, 1522, 1590, 1591 & 1592
O.R. VOL. 42 PAGE 894
O.R. VOL. 173 PAGES 2359 & 2544
O.R. VOL. 177 PAGE 310
O.R. VOL. 193 PAGE 2186
O.R. VOL. 203 PAGE 964 BEARINGS FROM PLAT VOL. 19 PAGE 1522
O.R. VOL. 206 PAGE 2081
O.R. VOL. 211 PAGES 251 & 253
O.R. VOL. 214 PAGES 1926, 1929 & 1932

Instrument
70090066141 DE Book Page
2 103
20090066141
Filed for Record in
HOLMES COUNTY OH
40174 NAD
11-23-09 BY 6938
PLAT LARG
OF BOOK
REV 215 pages 8/13/10
20090066141
HEARLAND TITEL
MILLERSBURG OH 44650



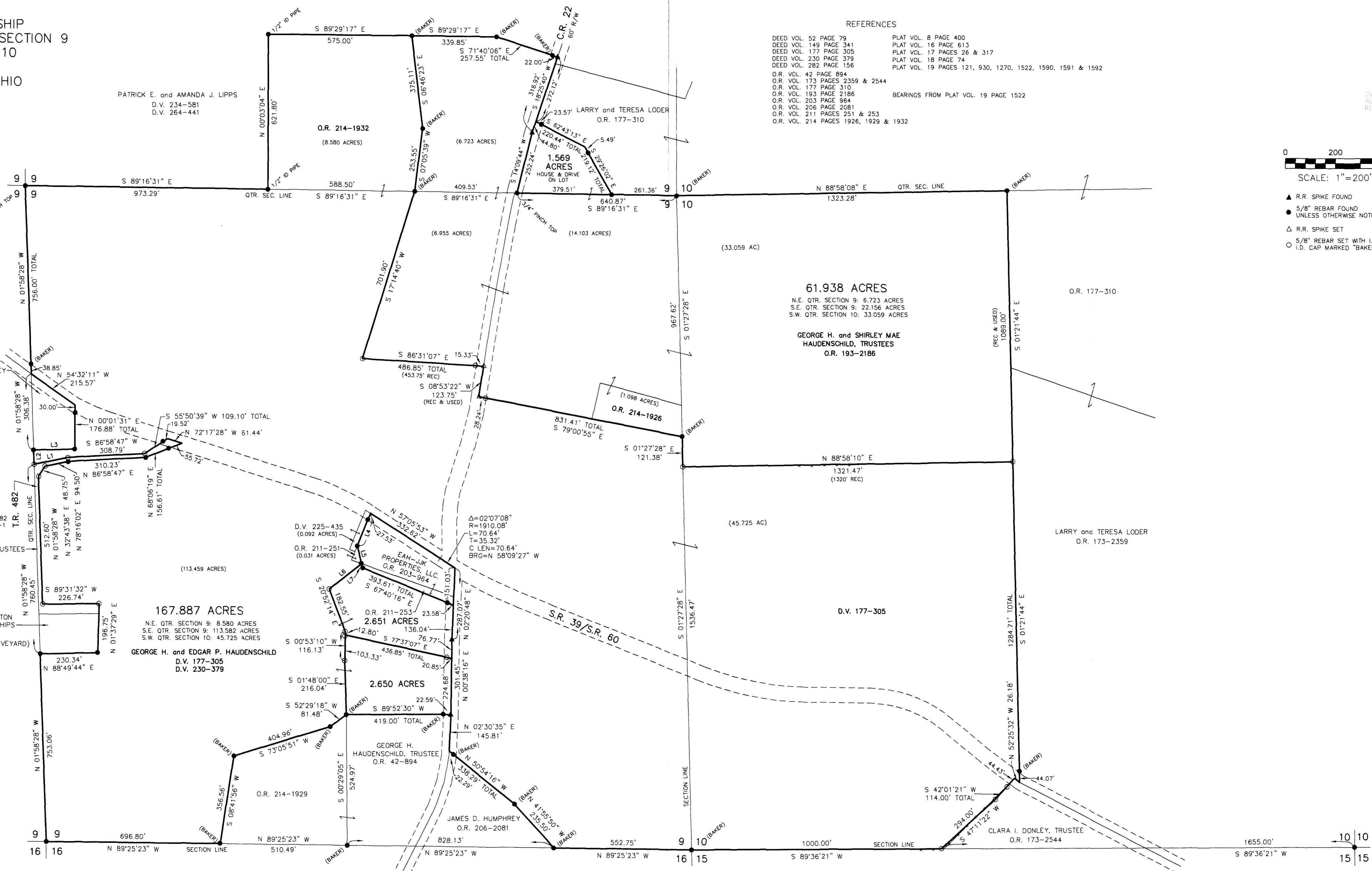
- ▲ R.R. SPIKE FOUND
- 5/8" REBAR FOUND UNLESS OTHERWISE NOTED
- △ R.R. SPIKE SET
- 5/8" REBAR SET WITH I.D. CAP I.D. CAP MARKED "BAKER 6938"

| LINE | BEARING | DISTANCE |
|------|---------------|----------|
| L1 | S 78°16'02" W | 137.33' |
| L2 | N 01°58'28" W | 57.28' |
| L3 | N 88°31'32" E | 165.00' |
| L4 | S 21°58'05" W | 141.18' |
| L5 | S 13°51'45" E | 73.71' |
| L6 | S 51°49'04" W | 165.00' |
| L7 | S 13°51'45" E | 17.31' |

NOTE:
SEE P.V. 17-351 AND
O.R. 44-883 FOR
INFORMATION ON T.R. 482
RESOLUTION 12-30-99-1

WASHINGTON TOWNSHIP TRUSTEES
D.V. 282-156

CITIZENS OF WASHINGTON
and ADJOINING TOWNSHIPS
D.V. 52-79
(aka DRAKE'S VALLEY GRAVEYARD)



DONALD C. BAKER SURVEYING
138 N. CLAY STREET
MILLERSBURG, OHIO 44654
PH. 330-674-4788
FAX 330-674-6027

APPROVED FOR TRANSFER ONLY
NO SUBDIVISION PLAT REQUIRED
ID R.C. 711.001 & 711.131
Lot(s) not for building unless
approved by Board of Health
HOLMES CO. PLANNING COMM.
By: *DB* Date: 11-23-09



PLAT APPROVED
11-12-09 *Jef*
I CERTIFY THIS SURVEY TO BE CORRECT
TO THE BEST OF MY KNOWLEDGE.
Donald C. Baker
DONALD C. BAKER P.S. 6938
DATE: JULY 21, 2009
REVISED: NOV. 3, 2009
KES\ALG-FDB
FILE NAME: WORK4\S-568-08\ERZ