

MECHANIC TOWNSHIP
 S.E. & S.W. QTRS. SECTION 2
 T-8 N; R-7 W
 HOLMES COUNTY, OHIO

SURVEYED FOR: BONNIE LEE

REFERENCES

- DEED VOL. 196 PAGE 138
- DEED VOL. 213 PAGE 5
- DEED VOL. 269 PAGE 884
- O.R. VOL. 44 PAGE 35
- O.R. VOL. 71 PAGE 447
- O.R. VOL. 82 PAGE 179
- O.R. VOL. 188 PAGE 962
- O.R. VOL. 198 PAGE 1467
- O.R. VOL. 198 PAGE 2711
- O.R. VOL. 203 PAGE 563
- O.R. VOL. 206 PAGE 1118
- PLAT VOL. 2 PAGE 102
- PLAT VOL. 7 PAGE 717
- PLAT VOL. 8 PAGE 741
- PLAT VOL. 13 PAGE 102
- PLAT VOL. 15 PAGE 57
- PLAT VOL. 17 PAGES 335 & 841
- PLAT VOL. 19 PAGES 3, 1093, 1236 & 1363
- BEARINGS FROM PLAT VOL. 19 PAGE 1263

Instrument 200900062696 OR Book Page 2 461

200900062696
 Filed for Record in
 HOLMES COUNTY OH
 ABITA HALL
 08-11-2009 At 04:04 pm.
 PLAT LARGE 36.40
 OR Book 2 Page 481 - 481
 OR 212 p 2606

200900062696
 UNATCHFIELD...
 & JOHNSTON ATTYS
 MILLERSBURG OH

U.S. 62/S.R. 83

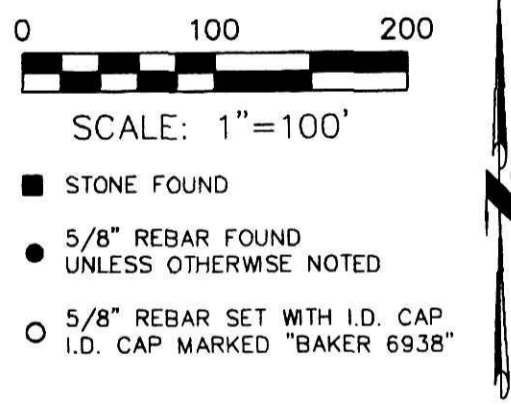
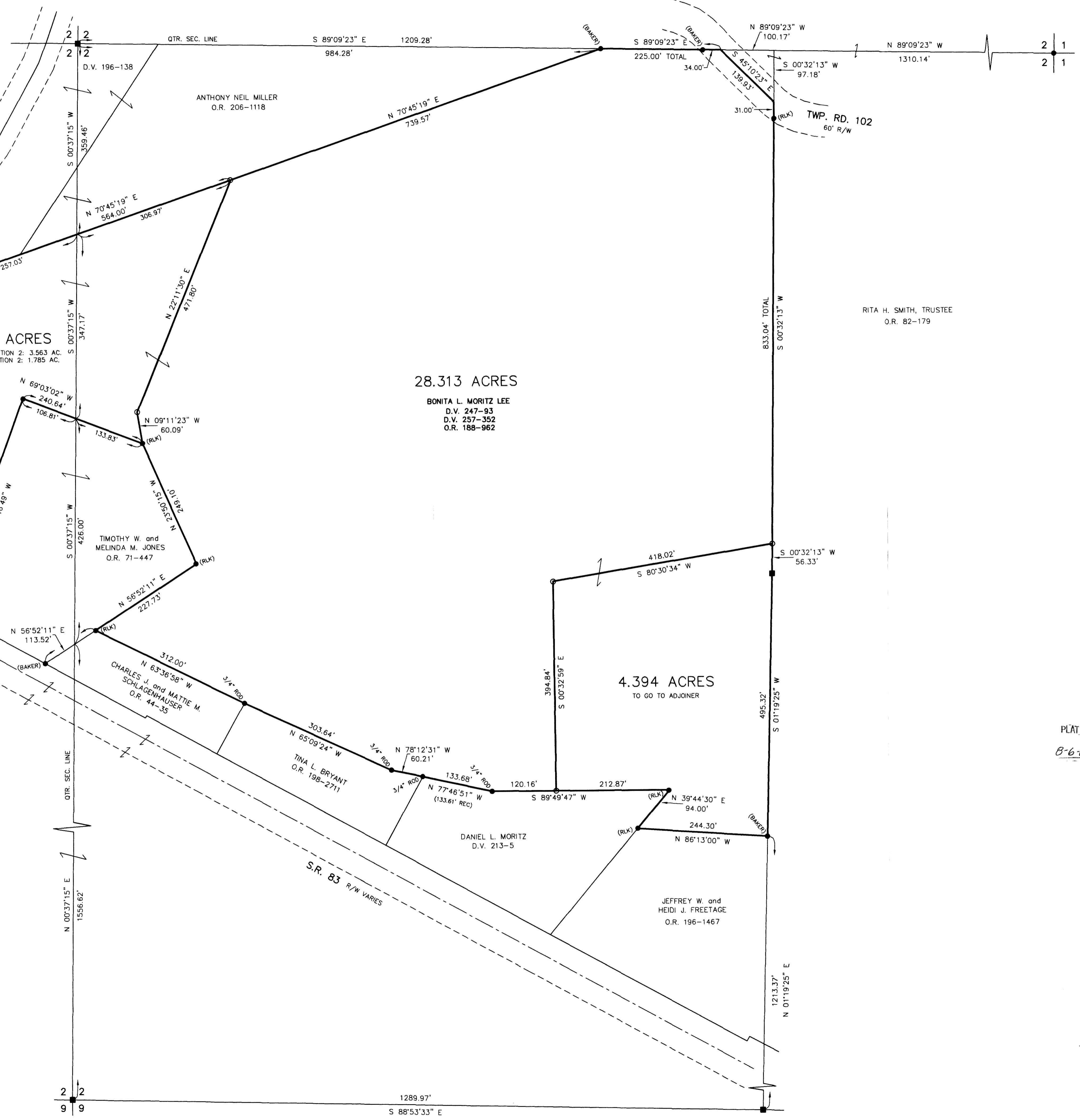
U.S. 62
 R/W VARIES



I CERTIFY THIS SURVEY TO BE CORRECT
 TO THE BEST OF MY KNOWLEDGE.

Donald C. Baker

DONALD C. BAKER P.S. 6938
 DATE: SEPT. 3, 2008
 KES\ALG
 FILE NAME: WORK4\S-403-08\ERZ



PLAT APPROVED
 8-6-09 *[Signature]*

APPROVED FOR TRANSFER ONLY
 NO SUBDIVISION PLAT REQUIRED
 (O.R.C. 711.001 & 711.131)
 Lot(s) not for building unless
 approved by Board of Health.
 HOLMES CO. PLANNING COMM.
 By *[Signature]* Date 8-10-09

DONALD C. BAKER SURVEYING
 138 N. CLAY STREET
 MILLERSBURG, OHIO 44654
 PH. 330-674-4788
 FAX 330-674-6027