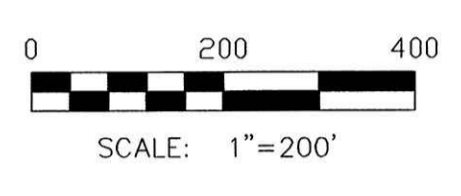
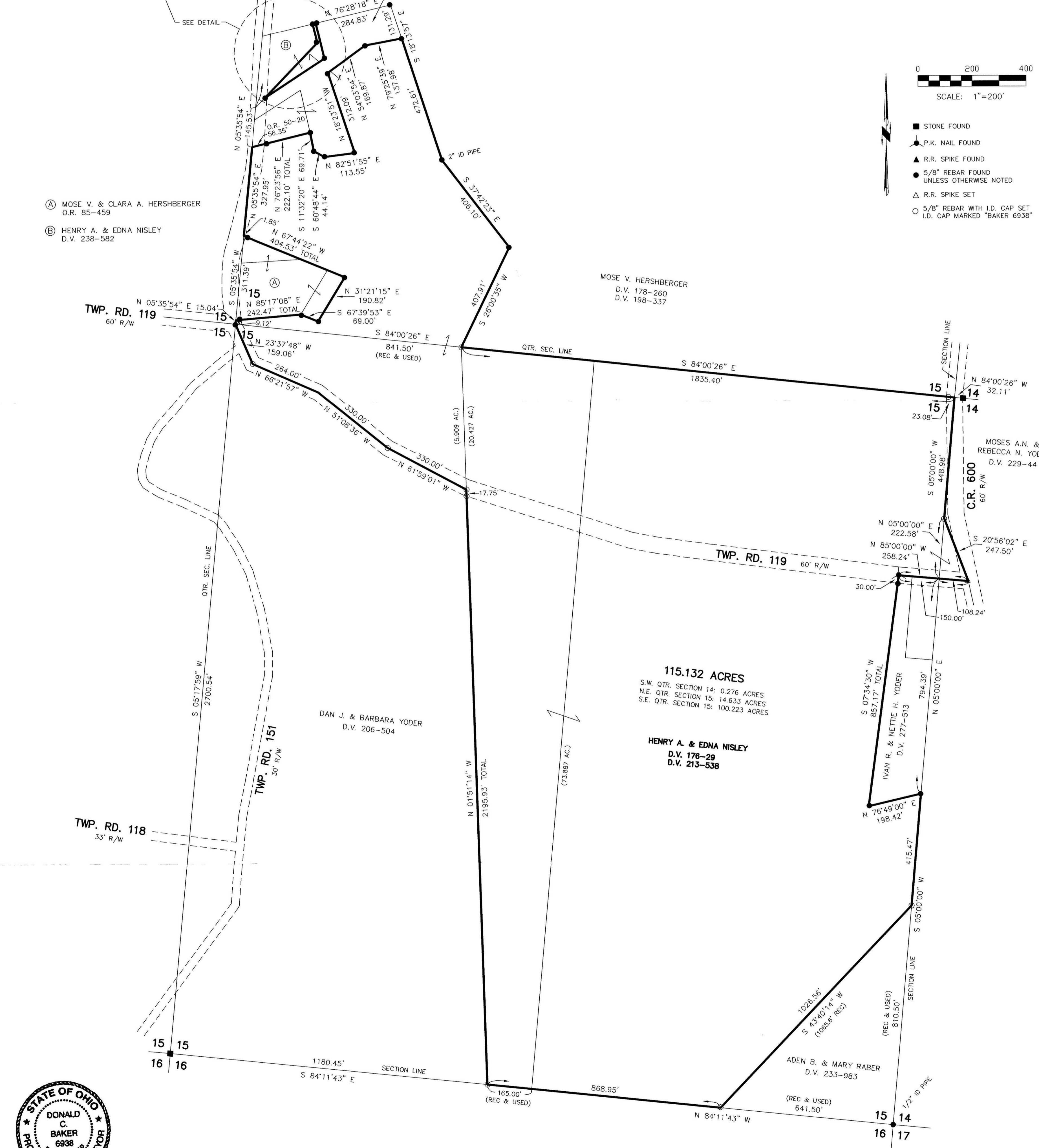
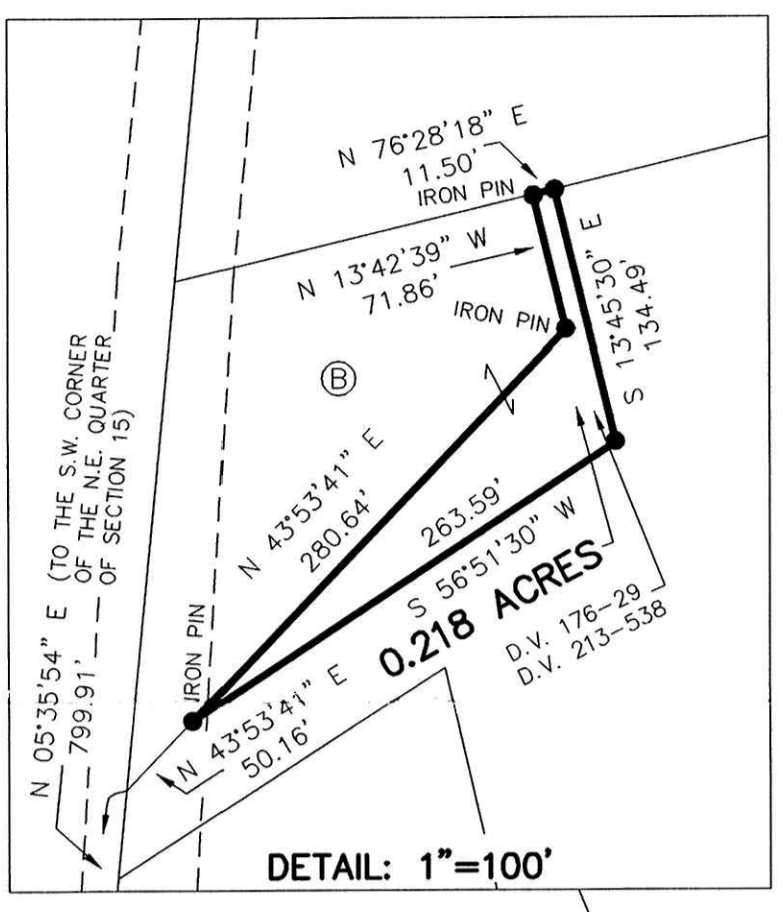


CLARK TOWNSHIP  
S.W. QTR. SECTION 14  
N.E. & S.E. QTRS. SECTION 15  
T-8 N; R-5 W  
HOLMES COUNTY, OHIO  
SURVEYED FOR: HENRY NISLEY

REFERENCES:

- DEED VOL. 176 PAGE 29
  - DEED VOL. 178 PAGE 260
  - DEED VOL. 198 PAGE 337
  - DEED VOL. 206 PAGE 504
  - DEED VOL. 213 PAGE 538
  - DEED VOL. 229 PAGE 44
  - DEED VOL. 233 PAGE 983
  - DEED VOL. 238 PAGE 649
  - DEED VOL. 277 PAGE 513
  - O.R. VOL. 50 PAGE 20
  - O.R. VOL. 85 PAGE 459
  - PLAT VOL. 4 PAGE 76
  - PLAT VOL. 7 PAGE 4
  - PLAT VOL. 10 PAGES 384 & 932
  - PLAT VOL. 14 PAGE 948
  - PLAT VOL. 16 PAGE 369
  - PLAT VOL. 17 PAGE 454
- BEARINGS FROM PLAT VOL. 16 PAGE 369



- STONE FOUND
- P.K. NAIL FOUND
- ▲ R.R. SPIKE FOUND
- 5/8" REBAR FOUND UNLESS OTHERWISE NOTED
- △ R.R. SPIKE SET
- 5/8" REBAR WITH I.D. CAP SET I.D. CAP MARKED "BAKER 6938"

- (A) MOSE V. & CLARA A. HERSHBERGER  
O.R. 85-459
- (B) HENRY A. & EDNA NISLEY  
D.V. 238-582



I CERTIFY THIS SURVEY TO BE CORRECT TO THE BEST OF MY KNOWLEDGE.  
 DONALD C. BAKER PS 6938  
 DATE: JULY 11, 2006  
 FDB\WMB  
 File Name: C:\WORK\S-457-06\ERZ

PLAT APPROVED  
 7/25/2006  
 DONALD C. BAKER SURVEYING  
 138 N. CLAY ST.  
 MILLERSBURG, OH 44654  
 PH. 330-674-4788  
 FAX: 330-674-6027