

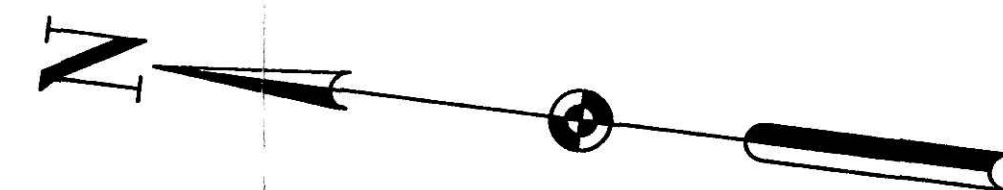
LEGEND

- PROPERTY MARKER FOUND AS NOTED
- o 1/2 INCH IRON BAR WITH H&A CAP SET UNLESS OTHERWISE NOTED
- C CENTERLINE
- L LOT LINE
- R/W RIGHT-OF-WAY
- () DENOTES RECORD BEARINGS AND DISTANCES
- P.O.B. POINT OF BEGINNING

Instrument 200500035856 OR Book 2 Page 393

200500035856 HEARTLAND TITLE MILLERSBURG, OH

200500035856 Filed for Record in HOLMES COUNTY, OH SALLY MILLER 03-24-2005 At 03:51 pm. PLAT LARGE 86.40 OR Book 2 Page 393 - 393 Rev 179 page 102



SCALE: 1" = 30'



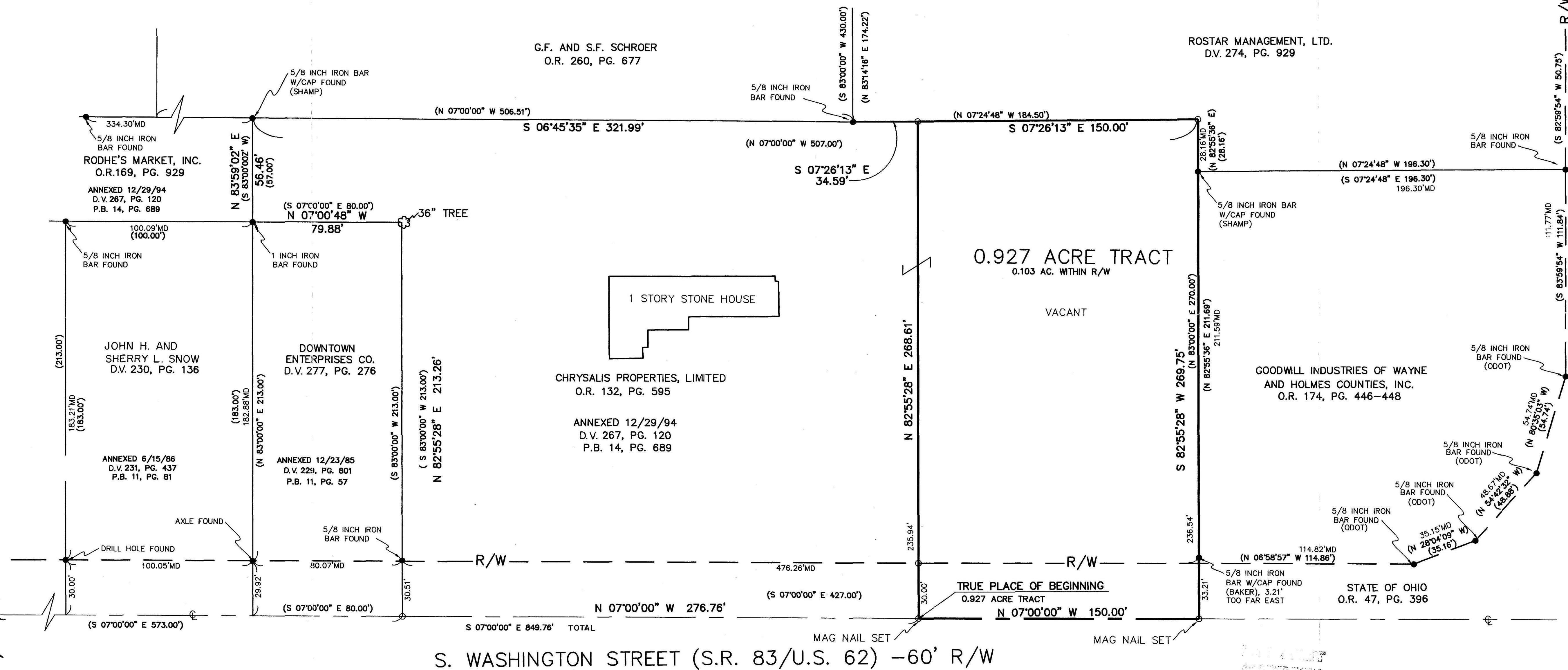
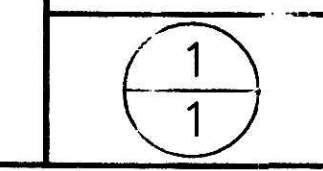
HAMMONTREE & ASSOCIATES, LTD.
 ENGINEERS, PLANNERS, SURVEYORS
 CANTON PITTSBURGH AKRON
 5033 STONEHAM ROAD, NORTH CANTON, OHIO 44720
 PHONE: CANTON (330) 499-8817 AKRON (330) 833-7274
 TOLL FREE: 1-800-361-8817 FAX: (330) 499-0149
 www.hammtree-engineers.com

REV. BY:	DATE:	DESC.:

DESIGN BY: CHKD. BY: CFH
 DRAWN BY: KMD R/W.D. BY: CFH
 FIELD CREW CHIEF: JLS
 F.B. 482 PAGE: 57
 COPYRIGHT: 2005 DATE: 2/8/05
 P:\D\2005\200500035856.DWG

SCALES: HORIZ: 1"=30'

BOUNDARY SURVEY
 0.927 ACRE TRACT
 FOR: LAMBOS INVESTMENT PARTNERS
 LOCATED IN VILLAGE OF MILLERSBURG,
 COUNTY OF HOLMES, STATE OF OHIO
 S.E. QTR., SEC. 19, FORMER HARDY TWP (T-9, R-7)



BASIS OF BEARING:
 S 07°00'00" E ALONG THE CENTERLINE OF SOUTH WASHINGTON STREET
 STREET (S.R. 83/U.S. 62) BY A DEED RECORDED IN OFFICIAL
 RECORD 132, PAGE 595 OF THE HOLMES COUNTY DEED RECORDS.

DATA USED:
 TAX MAPS - MILLERSBURG 8
 DEEDS - O.R. 174, PG. 446
 O.R. 132, PG. 595
 O.R. 47, PG. 396
 D.V. 277, PG. 276
 O.R. 260, PG. 677
 D.V. 274, PG. 929
 D.V. 229, PG. 586

PROPOSED ANNEXATION TO THE VILLAGE OF MILLERSBURG
 BY DONALD C. BAKER, P.S. 6938 DATED SEPT. 2, 1994.
 (P.B. 14, PG. 689)
 RIGHT OF WAY PLAN - HOL-62-30.649

HAMMONTREE & ASSOCIATES, LIMITED
SURVEY DATE - 2/8/05

Charles F. Hammontree
Charles F. Hammontree, P.S. #7263



PLAT APPROVED

3-16-05

DATE: 2/8/05