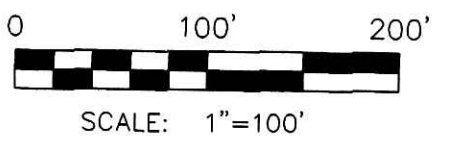


PAINT TOWNSHIP
4TH. QTR., LOTS 17 & 18
T-10 N; R-5 W
HOLMES COUNTY, OHIO
SURVEYED FOR: TONY & STEVE MULLET

CURVE	RADIUS	ARC LENGTH	CHORD LENGTH	CHORD BEARING	DELTA ANGLE	TANGENT
C1	1790.70'	50.01'	50.01'	S 79°17'07" E	01°36'01"	25.01'



- 5/8" REBAR FOUND UNLESS OTHERWISE NOTED
- 5/8" REBAR WITH I.D. CAP SET I.D. CAP MARKED "BAKER 6938"

REFERENCES:
D.V. 219 PAGE 882
D.V. 193 PAGE 380
O.R. 55 PAGE 253

PLAT VOL. 7 PAGE 764
PLAT VOL. 14 PAGE 259
PLAT VOL. 10 PAGE 62
PLAT VOL. 7 PAGE 679
PLAT VOL. 12 PAGE 628
PLAT VOL. 13 PAGE 172

BEARINGS FROM PLAT VOL. 13 PAGE 172.

200300026938
PAUL A.
MILLER LAW
MILLERSBURG, OH

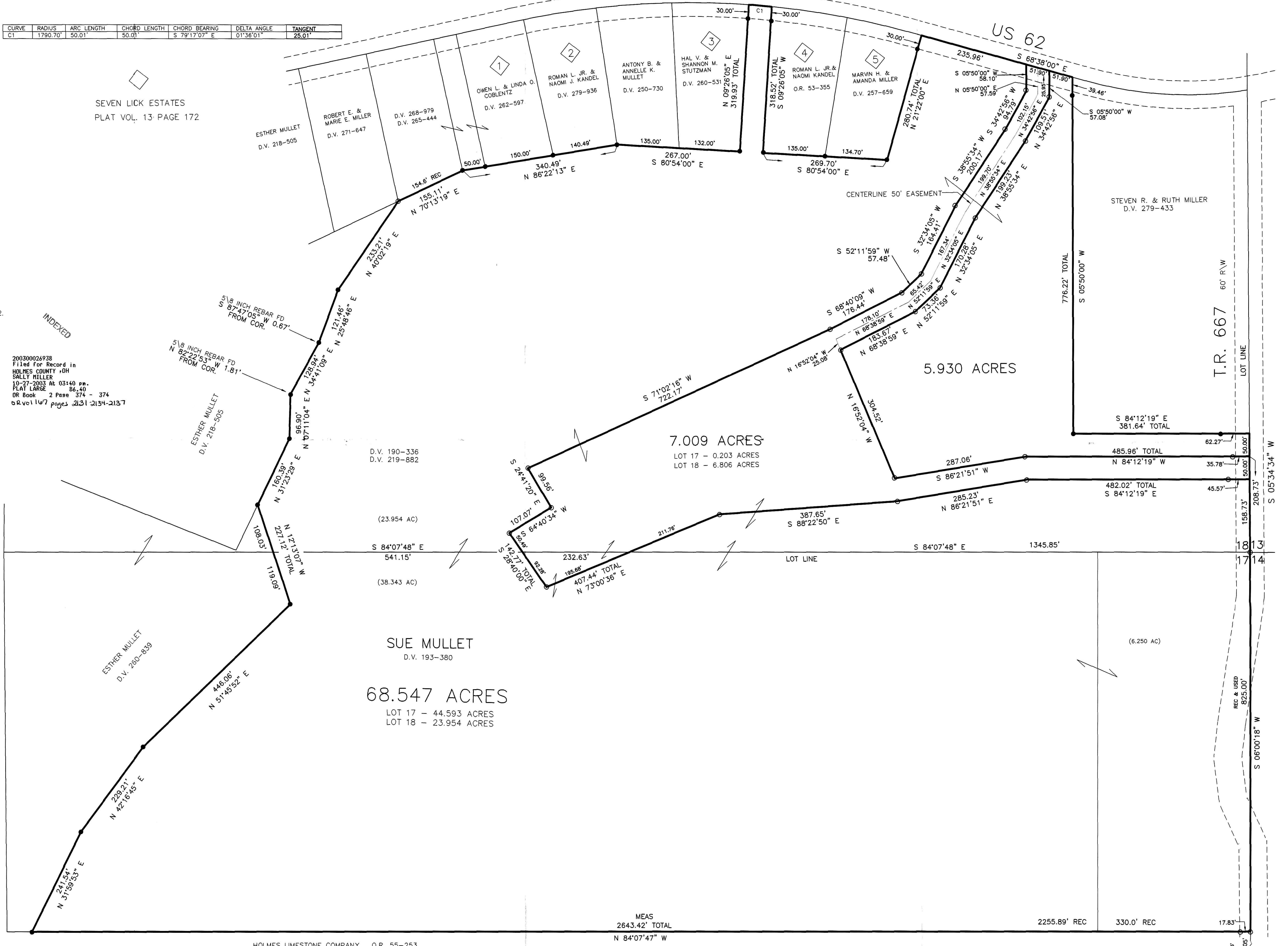
200300026938
Filed for Record in
HOLMES COUNTY, OH
SALLY MILLER
10-27-2003 At 03:40 pm.
PLAT LARGE 86.40
DR Book 2 Page 374 - 374
O.R. vol 167 pages 2131-2134-2137

INDEXED



I CERTIFY THIS SURVEY TO BE CORRECT TO THE BEST OF MY KNOWLEDGE.
Donald C. Baker
DONALD C. BAKER PS 6938
FCC\FDB DATE: FEB. 27, 2003
File Name: C:\WORK\5-907-03

DONALD C. BAKER SURVEYING
138 N. CLAY ST.
MILLERSBURG, OH 44654
PH. 330-674-4785
FAX: 330-674-6027



HOLMES LIMESTONE COMPANY O.R. 55-253

MEAS
2643.42' TOTAL
N 84°07'47" W

2255.89' REC 330.0' REC 17.83'

PLAT APPROVED

10/23/2003

17 14
16 15