

RICHLAND TOWNSHIP
N.E., N.W. & S.W. QTRS. SECTION 24
T-8 N; R-9 W
HOLMES COUNTY, OHIO
 (SURVEYED FOR: JOHN DECOSKY TRUST & DECOSKY DEVELOPMENT CORP.)



- SCALE: 1" = 200'
- ▲ R.R. SPIKE FOUND
 - STAKE FOUND
 - IRON PIN FOUND
 - P.K. NAIL SET
 - 5/16" RE BAR WITH 1/2" CAP SET
 - I.D. CAP MARKED "BAKER 6938"

REFERENCES:
 DEED VOL. 229 PAGE 718
 DEED VOL. 270 PAGE 294
 DEED VOL. 206 PAGE 701
 DEED VOL. 186 PAGE 335

PLAT VOL. 6 PAGE 40

"	"	12	"	357
"	"	12	"	390
"	"	7	"	203
"	"	2	"	283

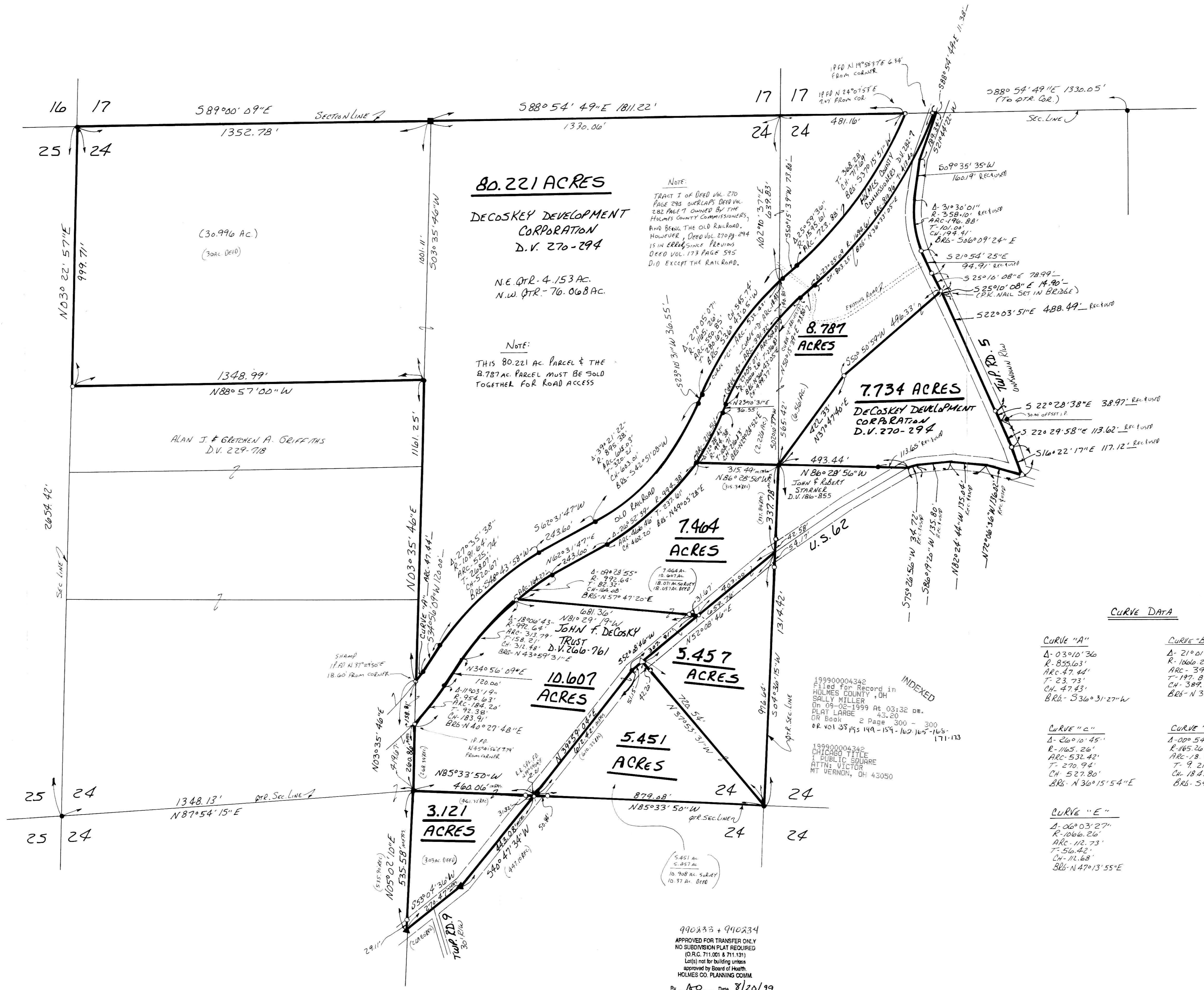
BEARINGS FROM DEED VOL. 282 PAGE 7



I CERTIFY THIS SURVEY TO BE CORRECT TO THE BEST OF MY KNOWLEDGE.

Donald C. Baker
DONALD C. BAKER P.S. 6938
 DONALD C. BAKER SURVEYING
 138 N. CLAY ST.
 MILLERSBURGH, OHIO 44654
 PH. (330) 674-4788

JULY 15, 1999
 # 44499 - M.L.DAVIS
 F.C.C. - F.D. B/H/S



CURVE DATA

CURVE "A"	CURVE "B"
Δ - 03°10'36"	Δ - 21°01'40"
R - 855.63'	R - 1066.26'
ARC - 47.44'	ARC - 391.32'
T - 23.73'	T - 197.89'
CH - 389.15'	CH - 47.43'
BRG - S36°31'27"W	BRG - N33°41'21"E
CURVE "C"	CURVE "D"
Δ - 26°10'45"	Δ - 00°54'22"
R - 145.26'	R - 165.26'
ARC - 532.42'	ARC - 18.43'
T - 270.94'	T - 9.21'
CH - 527.80'	CH - 18.43'
BRG - N36°15'54"E	BRG - S49°48'28"W
CURVE "E"	
Δ - 06°03'27"	
R - 1066.26'	
ARC - 112.73'	
T - 56.42'	
CH - 11.68'	
BRG - N47°13'55"E	

990233 + 990234
 APPROVED FOR TRANSFER ONLY
 NO SUBDIVISION PLAT REQUIRED
 (O.R.C. 711.001 & 711.131)
 Lot(s) not for building unless
 approved by Board of Health
 HOLMES CO. PLANNING COM.
 By *[Signature]* Date 8/20/99