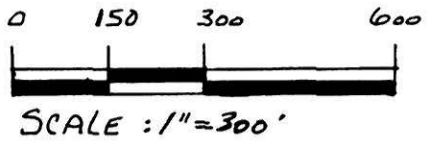


PRAIRIE TOWNSHIP
 N.E. & S.E. QTRS. SECTION 25
 N.E. & N.W. QTRS. SECTION 36
 T-14N; R-13W
 HOLMES COUNTY, OHIO
 (SURVEYED FOR RAILS TO TRAILS)

9700010595
 Filed for Record in
 HOLMES COUNTY, OH
 SALLY MILLER
 On 12-19-1997 At 01:07 pm.
 CNTY LG PLT 00
 Vol. 2 Pg. 277 - 277
 of 282 pg 7



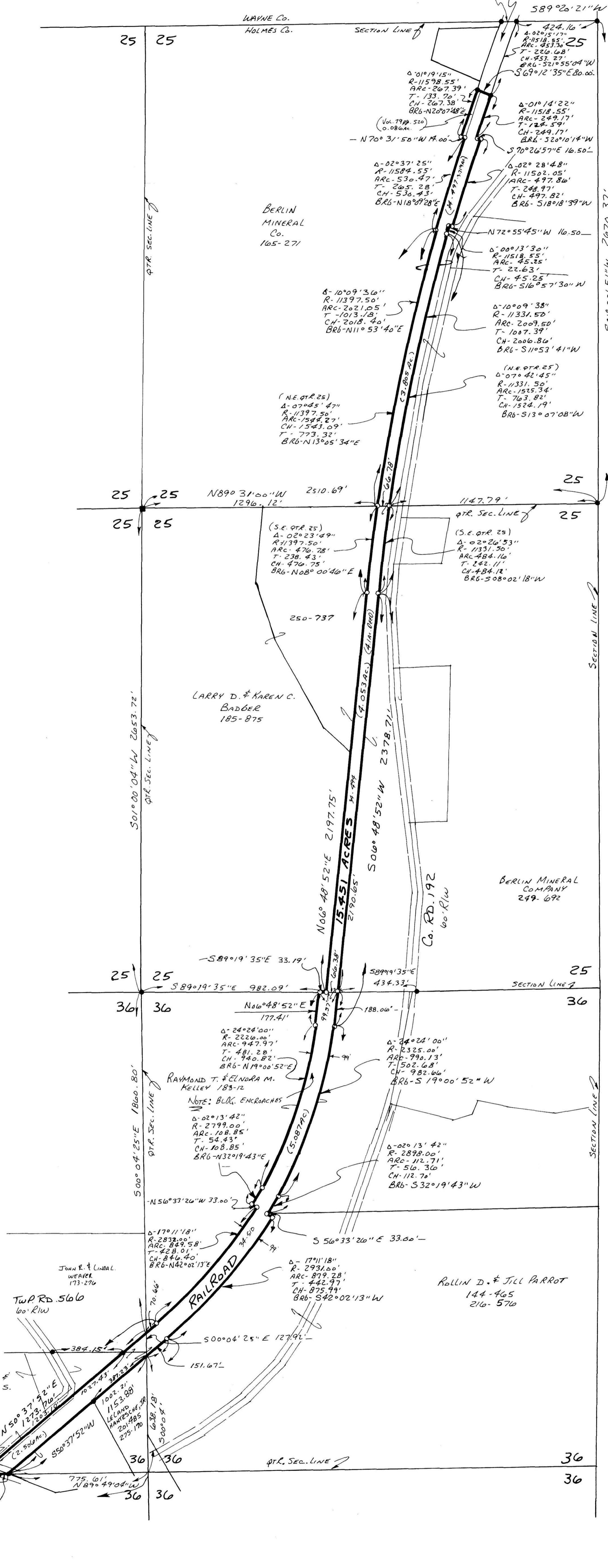
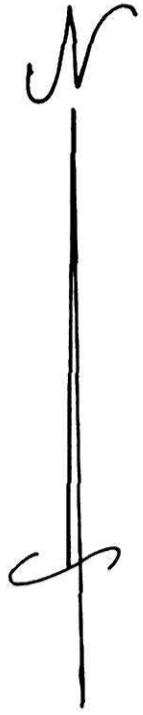
SCALE: 1"=300'

- IRON PIN FOUND
- 5/8" RE BAR WITH I.D. CAP SET
- 1.D. CAP MARKED "BAKER 6938"
- STONE FOUND

REFERENCES:

DEED VOL. 165 PAGE 271
 " " 244 " 692
 " " 185 " 875
 " " 250 " 737
 " " 216 " 576
 " " 252 " 385

PLAT VOL. 8 PAGE 374
 " " 12 " 576
 " " 13 " 739



I CERTIFY THIS SURVEY TO BE CORRECT
 TO THE BEST OF MY KNOWLEDGE.

Donald C. Baker
 DONALD C. BAKER P.S. 6938
 138 N. CLAY STREET
 MILLERSBURG, OHIO 44651
 PH. (330) 674-4788

MAY 1, 1997

#264978 - M.L. DAVIS
 F.C.C. - F.D. BAKER

9700010595
 SAMUEL STEINMEL ATTY
 MILLERSBURG,

#264978 - M.L. DAVIS
 F.C.C. - F.D. BAKER

PLAT APPROVED

12/14/1997

Plat "A"