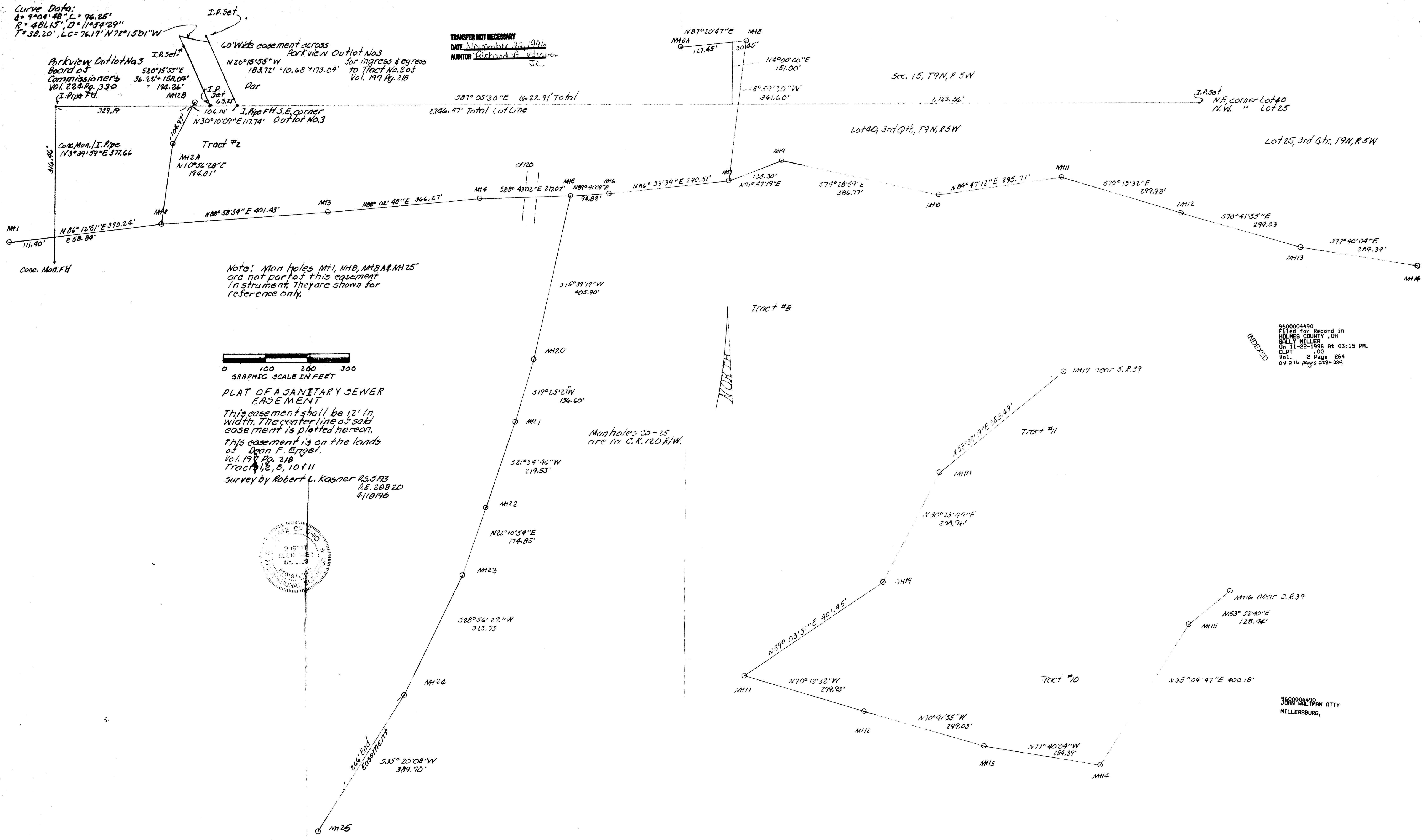


Curve Data:
 $\Delta = 90^\circ 4' 48''$, $L = 76.25'$
 $R = 481.15'$, $D = 11054.29''$
 $T = 38.20'$, $LC = 76.19'$ N72°15'01"W

Parkview Outlot No. 3
 Board of Commissioners
 Vol. 284 Pg. 330
 I.P. Pipe Fd.
 520°15'55"E
 36.26' + 158.04' = 194.30'
 N20°15'55"W
 183.72' = 10.68' + 173.04'

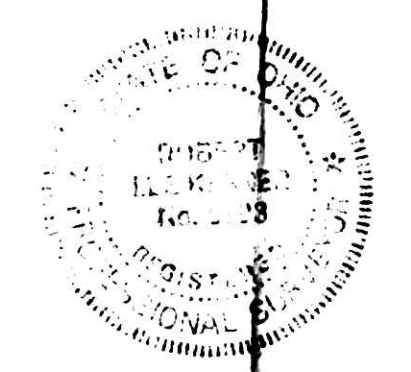
TRANSFER NOT NECESSARY
 DATE November 22 1996
 AUDITOR Richard A. Wharven



Notes: Man holes MH1, MH2, MH3 & MH25 are not part of this easement in instrument. They are shown for reference only.

0 100 200 300
 GRAPHIC SCALE IN FEET

PLAT OF A SANITARY SEWER EASEMENT
 This easement shall be 12' in width. The center line of said easement is plotted hereon.
 This easement is on the lands of Dean F. Ergel, Vol. 197 Pg. 218 Tracts 1, 2, 8, 10 & 11
 Survey by Robert L. Kasner P.S. 5793
 R.E. 28820
 4/18/96



Manholes 20-25 are in C.R. 120 R/W.

960004490
 Filed for Record in
 HOLMES COUNTY, OH
 SALLY MILLER
 On 11-22-1996 At 03:15 PM.
 CLPT 1.00
 Vol. 2 Page 264
 DV 276 pages 273-284

INDEXED

960004490
 JOHN WALTMAN ATTY
 MILLERSBURG,