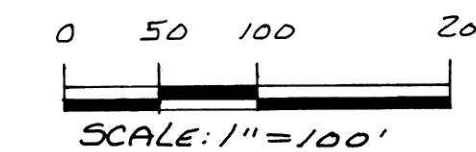


KILLBUCK TOWNSHIP
N.W. QTR. SECTION 7
S.W. QTR. SECTION 4
T-8 N ; R-7 W
HOLMES COUNTY, OHIO

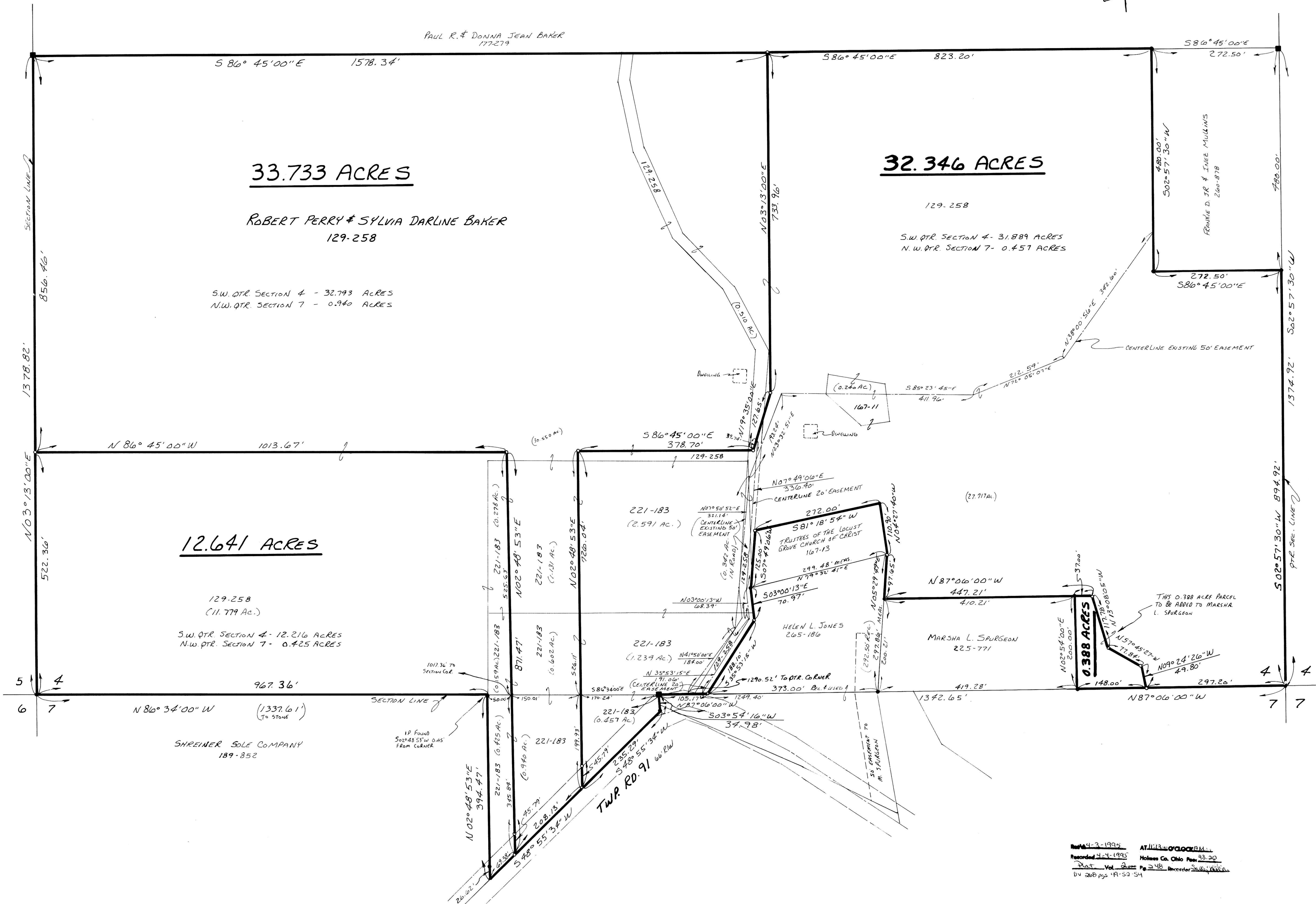


- STONE FOUND
- IRON PIN FOUND
- 5/8" RE BAR WITH I.D. CAP SET
- I.D. CAP MARKED "BAKER 6938"

REFERENCES:
 DEED VOL. 129 PAGE 258
 DEED VOL. 167 PAGE 11
 DEED VOL. 167 PAGE 13
 DEED VOL. 189 PAGE 852
 DEED VOL. 221 PAGE 183
 DEED VOL. 147 PAGE 423

PLAT VOL. 4 PAGE 169
 PLAT VOL. 6 PAGE 56
 PLAT VOL. 6 PAGE 48
 PLAT VOL. 10 PAGE 827

BEARINGS FROM DEED VOL. 260 PAGE 878



33.733 ACRES

ROBERT PERRY & SYLVIA DARLINE BAKER
 129-258

S.W. QTR. SECTION 4 - 32.793 ACRES
 N.W. QTR. SECTION 7 - 0.940 ACRES

32.346 ACRES

129-258
 S.W. QTR. SECTION 4 - 31.889 ACRES
 N.W. QTR. SECTION 7 - 0.457 ACRES

12.641 ACRES

129-258
 (11.779 Ac.)
 S.W. QTR. SECTION 4 - 12.216 ACRES
 N.W. QTR. SECTION 7 - 0.425 ACRES

SHREINER SOLE COMPANY
 189-852



I CERTIFY THIS SURVEY TO BE CORRECT
 TO THE BEST OF MY KNOWLEDGE.

Donald C. Baker
 DONALD C. BAKER P.S. 6938
 5958 T.R. 322
 MILLERSBURG, OHIO 44654
 PH. (216) 674-4788

MARCH 9, 1995

Map 4-3-1995 AT 11:30 AM
 Recorded 4-1-1995 Holmes Co. Ohio Fee 43.00
 Plat Vol. 248 Page 248 Recorder
 by 268 pgs 1A-52-54