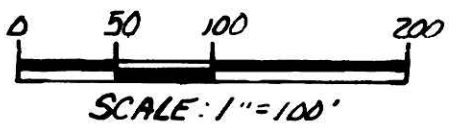
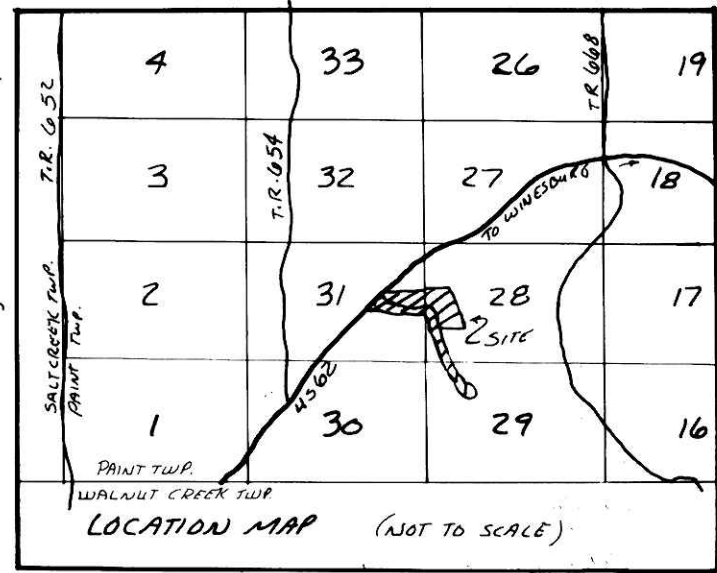


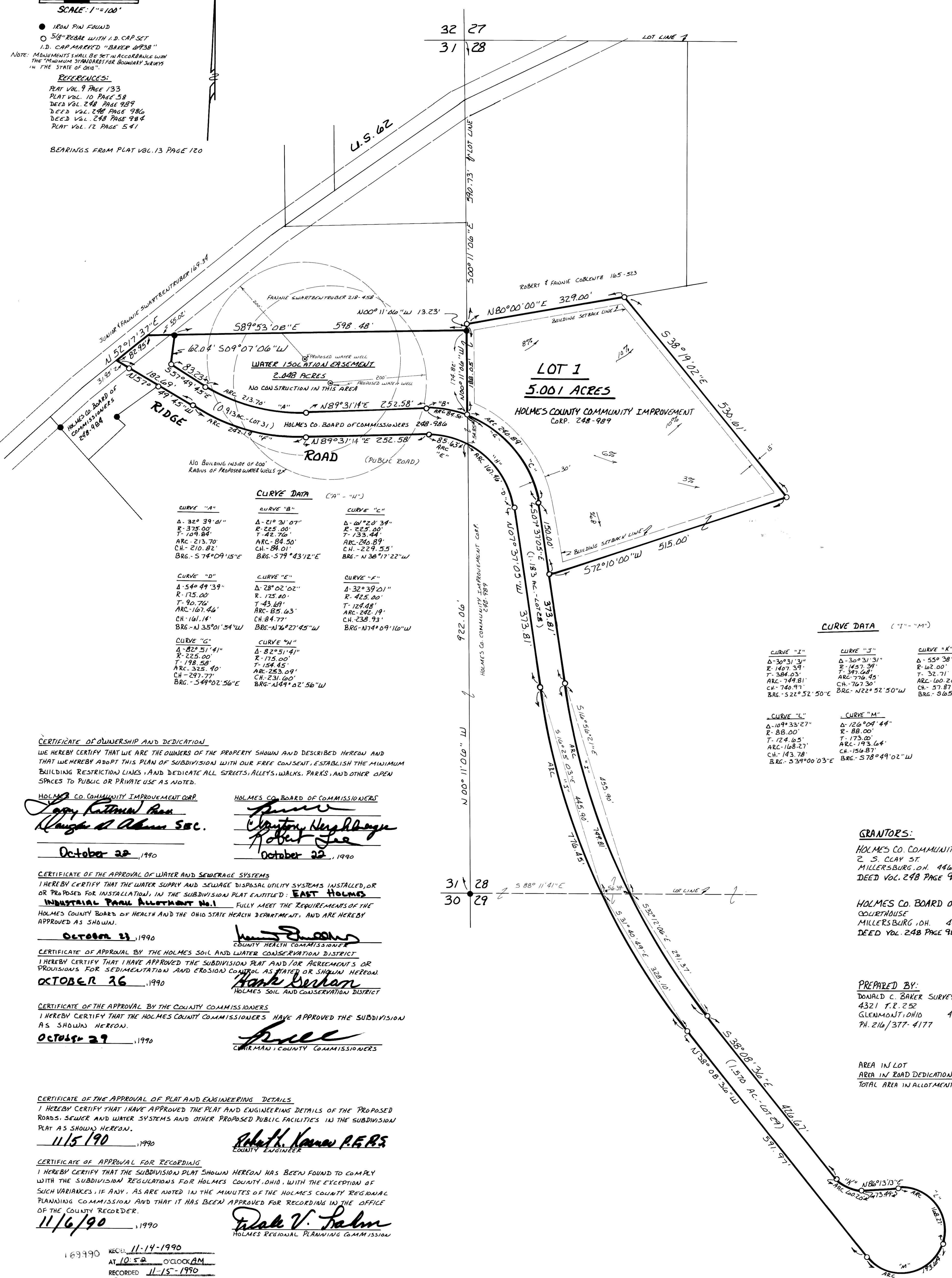
EAST HOLMES INDUSTRIAL PARK ALLOTMENT NO. 1

PAINT TOWNSHIP, 4TH. QTR. LOTS 28, 29 & 31
T-10N R-5W, HOLMES COUNTY, OHIO



● IRON PIN FOUND
○ 5/8\"/>
I.D. CAP MARKED "BAKER 6938"
I.D. CAP MARKED "BAKER 6938"
NOTE: MONUMENTS SHALL BE SET IN ACCORDANCE WITH THE "MINIMUM STANDARDS FOR BOUNDARY SURVEYS IN THE STATE OF OHIO"
REFERENCES:
PLAT VOL. 9 PAGE 133
PLAT VOL. 10 PAGE 58
DEED VOL. 248 PAGE 989
DEED VOL. 248 PAGE 986
DEED VOL. 248 PAGE 984
PLAT VOL. 12 PAGE 541

BEARINGS FROM PLAT VOL. 13 PAGE 120



CURVE DATA (A - H)

CURVE "A"	CURVE "B"	CURVE "C"
Δ- 32° 39' 01"	Δ- 21° 31' 07"	Δ- 61° 20' 39"
R- 325.00'	R- 425.00'	R- 225.00'
T- 109.84'	T- 42.70'	T- 133.44'
ARC- 213.70'	ARC- 84.50'	ARC- 240.89'
CH- 210.82'	CH- 84.01'	CH- 229.55'
BRG- S 74° 09' 15\"	BRG- S 79° 43' 12\"	BRG- N 36° 17' 22\"

CURVE "D"	CURVE "E"	CURVE "F"
Δ- 54° 49' 39"	Δ- 28° 02' 02"	Δ- 32° 39' 01"
R- 175.00'	R- 175.00'	R- 425.00'
T- 90.76'	T- 43.81'	T- 124.48'
ARC- 167.46'	ARC- 85.63'	ARC- 262.19'
CH- 161.14'	CH- 84.77'	CH- 238.93'
BRG- N 35° 01' 54\"	BRG- N 76° 27' 45\"	BRG- N 74° 09' 16\"

CURVE "G"	CURVE "H"
Δ- 82° 51' 41"	Δ- 82° 51' 41"
R- 225.00'	R- 175.00'
T- 198.58'	T- 154.45'
ARC- 325.40'	ARC- 253.09'
CH- 297.77'	CH- 231.60'
BRG- S 49° 02' 56\"	BRG- N 49° 02' 56\"

CURVE DATA (I - M)

CURVE "I"	CURVE "J"	CURVE "K"
Δ- 30° 31' 31"	Δ- 30° 31' 31"	Δ- 55° 38' 11"
R- 140.75'	R- 140.75'	R- 102.00'
T- 384.03'	T- 397.64'	T- 32.71'
ARC- 749.81'	ARC- 710.45'	ARC- 100.20'
CH- 740.91'	CH- 707.30'	CH- 57.87'
BRG- S 22° 52' 50\"	BRG- N 22° 52' 50\"	BRG- S 65° 37' 41\"

CURVE "L"	CURVE "M"
Δ- 149° 33' 27"	Δ- 126° 09' 44"
R- 88.00'	R- 88.00'
T- 124.65'	T- 173.00'
ARC- 168.27'	ARC- 193.64'
CH- 150.87'	CH- 150.87'
BRG- S 39° 00' 03\"	BRG- S 78° 49' 02\"

CERTIFICATE OF OWNERSHIP AND DEDICATION
WE HEREBY CERTIFY THAT WE ARE THE OWNERS OF THE PROPERTY SHOWN AND DESCRIBED HEREON AND THAT WE HEREBY ADOPT THIS PLAN OF SUBDIVISION WITH OUR FREE CONSENT, ESTABLISH THE MINIMUM BUILDING RESTRICTION LINES, AND DEDICATE ALL STREETS, ALLEYS, WALKS, PARKS, AND OTHER OPEN SPACES TO PUBLIC OR PRIVATE USE AS NOTED.

HOLMES CO. COMMUNITY IMPROVEMENT CORP.
James R. Johnson
Alvin D. Adams Sec.
October 22, 1990

HOLMES CO. BOARD OF COMMISSIONERS
Clayton N. Hanger
Robert Lee
October 22, 1990

CERTIFICATE OF THE APPROVAL OF WATER AND SEWERAGE SYSTEMS
I HEREBY CERTIFY THAT THE WATER SUPPLY AND SEWAGE DISPOSAL UTILITY SYSTEMS INSTALLED, OR PROPOSED FOR INSTALLATION, IN THE SUBDIVISION PLAT ENTITLED: **EAST HOLMES INDUSTRIAL PARK ALLOTMENT NO. 1** FULLY MEET THE REQUIREMENTS OF THE HOLMES COUNTY BOARD OF HEALTH AND THE OHIO STATE HEALTH DEPARTMENT, AND ARE HEREBY APPROVED AS SHOWN.

James R. Johnson
COUNTY HEALTH COMMISSIONER

CERTIFICATE OF APPROVAL BY THE HOLMES SOIL AND WATER CONSERVATION DISTRICT
I HEREBY CERTIFY THAT I HAVE APPROVED THE SUBDIVISION PLAT AND/OR AGREEMENTS OR PROVISIONS FOR SEDIMENTATION AND EROSION CONTROL AS STATED OR SHOWN HEREON.

Hank Berhan
HOLMES SOIL AND CONSERVATION DISTRICT

CERTIFICATE OF THE APPROVAL BY THE COUNTY COMMISSIONERS
I HEREBY CERTIFY THAT THE HOLMES COUNTY COMMISSIONERS HAVE APPROVED THE SUBDIVISION AS SHOWN HEREON.

Paul
CHAIRMAN, COUNTY COMMISSIONERS

CERTIFICATE OF THE APPROVAL OF PLAT AND ENGINEERING DETAILS
I HEREBY CERTIFY THAT I HAVE APPROVED THE PLAT AND ENGINEERING DETAILS OF THE PROPOSED ROADS, SEWER AND WATER SYSTEMS AND OTHER PROPOSED PUBLIC FACILITIES IN THE SUBDIVISION PLAT AS SHOWN HEREON.

Robert H. Korman P.E. P.S.
COUNTY ENGINEER

CERTIFICATE OF APPROVAL FOR RECORDING
I HEREBY CERTIFY THAT THE SUBDIVISION PLAT SHOWN HEREON HAS BEEN FOUND TO COMPLY WITH THE SUBDIVISION REGULATIONS FOR HOLMES COUNTY, OHIO, WITH THE EXCEPTION OF SUCH VARIANCES, IF ANY, AS ARE NOTED IN THE MINUTES OF THE HOLMES COUNTY REGIONAL PLANNING COMMISSION AND THAT IT HAS BEEN APPROVED FOR RECORDING IN THE OFFICE OF THE COUNTY RECORDER.

Paul V. Salvo
HOLMES REGIONAL PLANNING COMMISSION

169990 REC'D 11-14-1990
AT 10:52 O'CLOCK AM
RECORDED 11-15-1990
PLAT VOL. 2 PG. 224
Holmes Co., Ohio Fee: \$43.20
Richard G. Givens
Clerk

CERTIFICATE OF ACCURACY
I HEREBY CERTIFY THAT THE PLAN SHOWN AND DESCRIBED HEREON IS A TRUE AND CORRECT SURVEY TO THE ACCURACY REQUIRED BY THE HOLMES COUNTY REGIONAL PLANNING COMMISSION AND THAT THE MONUMENTS HAVE BEEN PLACED AS SHOWN HEREON.

Donald C. Baker
DONALD C. BAKER P. S. 6938



GRANTORS:
HOLMES CO. COMMUNITY IMPROVEMENT CORP.
2 S. CLAY ST.
MILLERSBURG, OH. 44654
DEED VOL. 248 PAGE 989

HOLMES CO. BOARD OF COMMISSIONERS
COURTHOUSE
MILLERSBURG, OH. 44654
DEED VOL. 248 PAGE 980

PREPARED BY:
DONALD C. BAKER SURVEYING
4321 T. R. 252
GLENMONT, OHIO 44628
PH. 216/377-4177

AREA IN LOT 5.001 ACRES
AREA IN ROAD DEDICATION 3.666 ACRES
TOTAL AREA IN ALLOTMENT 8.667 ACRES

NOT NECESSARY
DATE 11/15/1990
AUDITOR *[Signature]*