

Original Annexation Data:
 Annexation Date: Jan. 12, 1987
 Resolution: 86-36
 Recorded: Vol. 234 pg. 322
 Plat Recorded: Vol. 12 pg. 195

APPROVED, HOLMES COUNTY COMMISSIONERS
 I HEREBY CERTIFY THAT THE HOLMES COUNTY COMMISSIONERS
 HAVE APPROVED THE DETACHMENT OF THOSE TRACTS OF LAND
 AS SHOWN HEREON FROM HOLMES COUNTY AT A MEETING HELD

ON THE 6th DAY OF October, 1986

CORRECTION PLAT ACCEPTED ON THIS _____ DAY OF _____, 1990

Small
 CHAIRMAN, HOLMES Co. COMMISSIONERS

APPROVED MILLERSBURG PLANNING COMMISSION

I HEREBY CERTIFY THAT THIS PLAT FOR ANNEXATION WAS
 APPROVED BY THE MILLERSBURG PLANNING COMMISSION AT A
 MEETING HELD ON THE 13th DAY OF October, 1986

CORRECTION PLAT ACCEPTED ON THIS _____ DAY OF _____, 1990

Stan Timney
 PRESIDENT, MILLERSBURG VILLAGE COUNCIL

APPROVED MILLERSBURG VILLAGE COUNCIL

I HEREBY CERTIFY THAT THIS PLAT FOR ANNEXATION WAS
 APPROVED BY THE VILLAGE COUNCIL OF MILLERSBURG, OHIO AT A
 MEETING HELD ON THE 13th DAY OF October, 1986

CORRECTION PLAT ACCEPTED ON THIS 1st DAY OF Oct., 1990

Mary Edna Sijak
 VILLAGE CLERK

RECORDER

I HEREBY CERTIFY THAT THIS PLAT WAS RECEIVED FOR RECORD

ON _____, 1990 AT _____ AND WAS

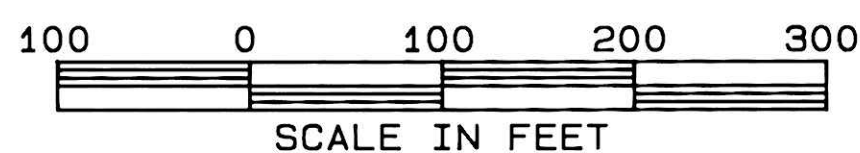
RECORDED IN PLAT BOOK _____ ON PAGE _____ ON _____, 1990

RECORDER, HOLMES Co., OHIO

FEE _____

CORRECTION
 OF THE
 ANNEXATION PLAT
 FOR
 MILLERSBURG COMMUNITY
 TELEVISION SYSTEMS INC.
 IN
 LOT 41, FIRST QUARTER
 RANGE 7W, TOWNSHIP 9N
 HARDY TOWNSHIP
 HOLMES COUNTY
 OHIO

JUNE 24, 1986
 REVISED Nov. 13, 1987



A.L. & J.F.
 MILLER
 190/170 152/440

N.D. & S.L.
 HOCHSTETLER
 209/470

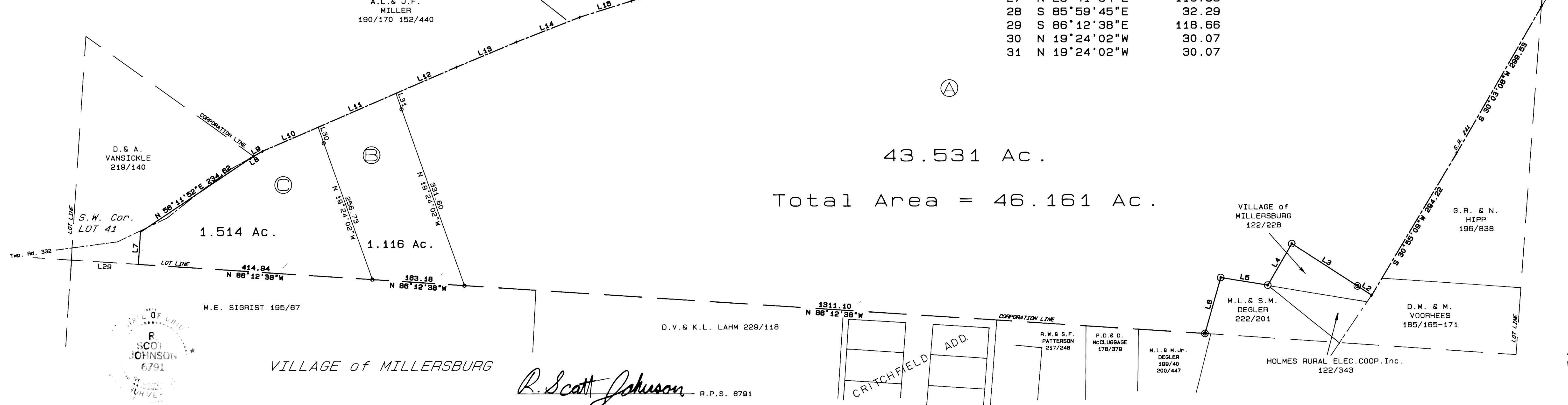
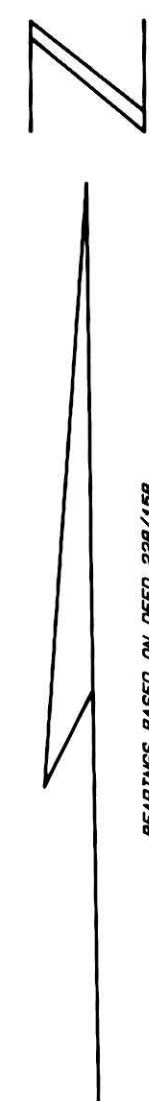
AZANT Co. 224/789

LOT 36

LINE	BEARING	DISTANCE
1	S 04°21'03"W	69.18
2	N 56°52'43"W	30.02
3	N 56°52'43"W	138.03
4	S 30°04'00"W	85.06
5	N 80°43'42"W	84.11
6	S 15°55'50"W	103.13
7	N 04°00'00"E	57.44
8	N 56°00'36"E	6.78
9	N 60°50'29"E	18.04
10	N 66°33'12"E	107.29
11	N 66°33'12"E	150.37
12	N 66°33'12"E	116.52
13	N 67°17'43"E	116.19
14	N 68°35'49"E	119.22
15	N 72°33'38"E	96.80
16	N 72°01'52"E	59.59
17	N 64°46'37"E	59.46
18	N 48°21'37"E	59.40
19	N 38°34'16"E	79.05
20	N 35°39'23"E	170.64
21	N 40°04'37"E	55.14
22	N 41°14'03"E	56.83
23	N 40°11'23"E	58.13
24	N 30°19'43"E	57.67
25	N 22°55'36"E	109.93
26	N 22°42'51"E	114.00
27	N 25°41'34"E	116.38
28	S 85°59'45"E	32.29
29	S 86°12'38"E	118.66
30	N 19°24'02"W	30.07
31	N 19°24'02"W	30.07

- ⊙ - SET 4"x30" CONCRETE MONUMENT W/Alum. CAP
- ⊙ - RECOVERED 6" CONCRETE MONUMENT
- ⊙ - RECOVERED STONE
- ⊙ - SET 3/4"x30" ReBAR W/Alum. CAP

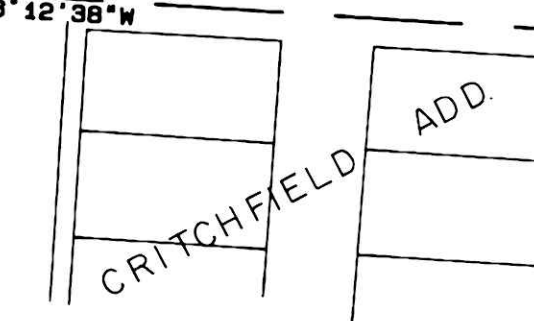
TRANSFER NOT NECESSARY
 DATE 10/10/90
 AUDITOR [Signature]



Prepared By
G.A. STEWART INC.
 450 S. 4th Street (614) 622-2783
 COSHOCTON, OHIO 43812



R. Scott Johnson R.P.S. 6791



R.M. & S.F.
 PATTERSON
 217/248

P.D. & D.
 McCLURGAGE
 178/379

M.L. & M.J.P.
 DEGLER
 198/40
 200/447

M.L. & S.M.
 DEGLER
 222/201

D.W. & M.
 VOORHEES
 165/165-171

G.R. & N.
 HIPPI
 196/838

VILLAGE OF
 MILLERSBURG
 122/228

D.V. & K.L. LAHM 229/118

RECORDED 10/10/90
 AT 3:05 O'CLOCK PM
 RECORDED 10/10/90
 VOL 223
 Holmes Co. Ohio Fee: 9.20
[Signature] Recorder