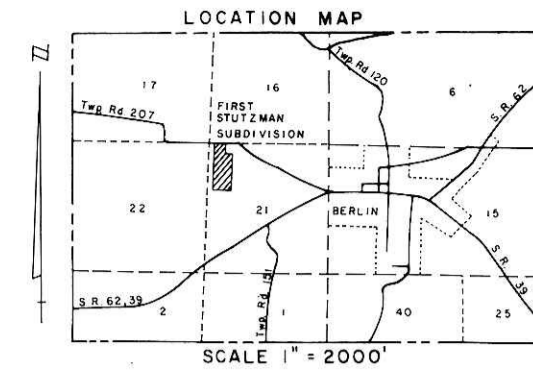


# FIRST STUTZMAN SUBDIVISION

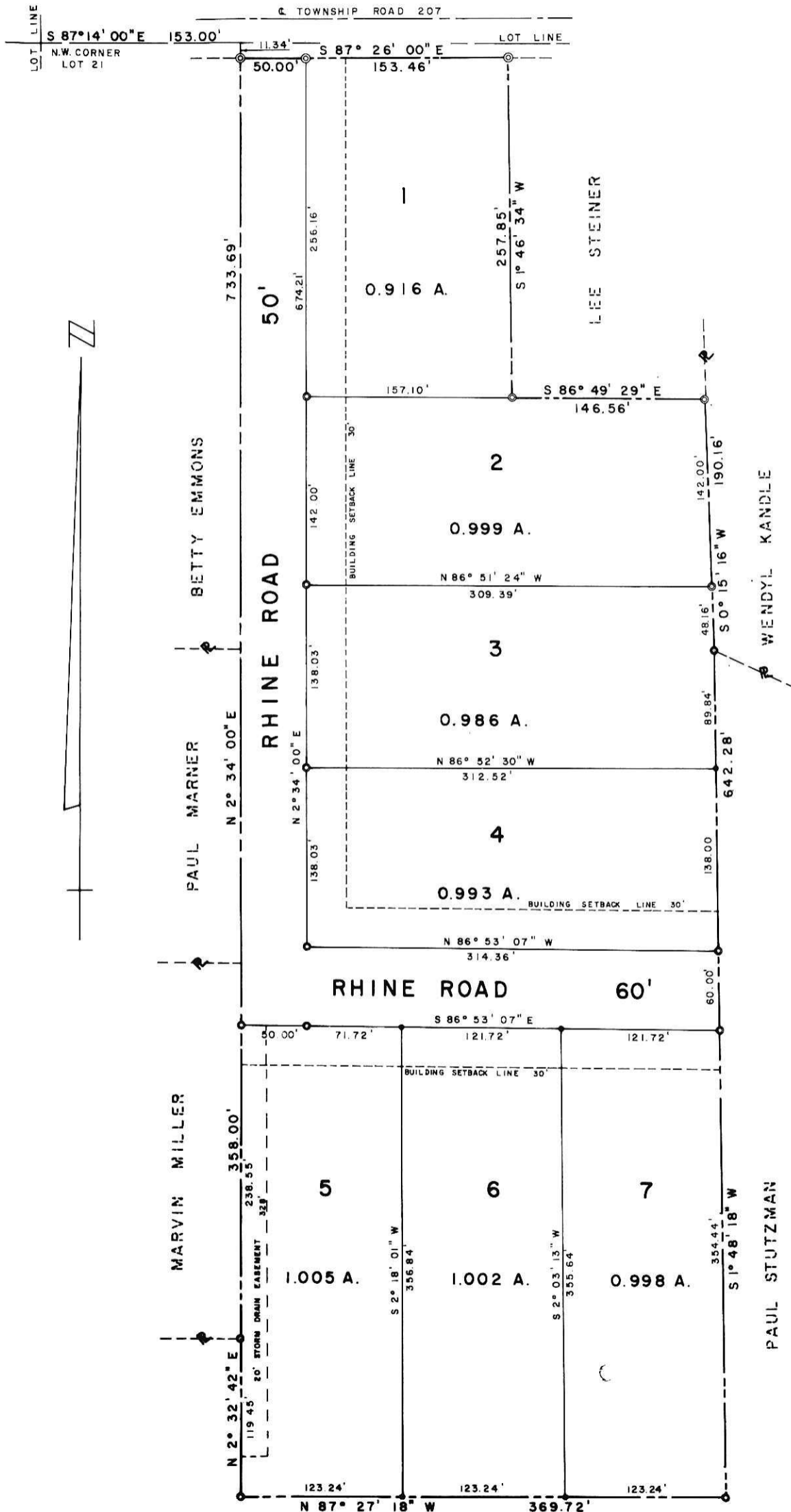
IN  
 LOT 21, FIRST QUARTER  
 RANGE 6W, TOWNSHIP 9N  
 BERLIN TOWNSHIP, HOLMES COUNTY  
 OHIO



MAY 1977



○ CONCRETE MONUMENT  
 ● STEEL PIN



Beginning at a concrete monument on the south right of way line of Township Road 207 which monument is located by the following two (2) courses from the northwest corner of Lot 21

(1) with the north line of said Lot 21, South 87° 14' 00" East, a distance of one hundred fifty-three and no hundredths (153.00) feet to a point in said Township Road 207,

(2) South 2° 34' 00" West, a distance of eleven and thirty-four hundredths (11.34) feet to the said point of beginning,

thence, following along the south right of way line of said Township Road 207 with the following two (2) courses:

(1) South 87° 26' 00" East, a distance of fifty and no hundredths (50.00) feet to a concrete monument,  
 (2) continuing South 87° 26' 00" East, a distance of one hundred fifty-three and forty-six hundredths (153.46) feet to a concrete monument,

thence running along the lands of Lee Steiner with the following two (2) courses;

(1) South 1° 46' 34" West, a distance of two hundred fifty-seven and eighty-five hundredths (257.85) feet to a concrete monument,  
 (2) South 86° 49' 26" East, a distance of one hundred forty-six and fifty-six hundredths (146.56) feet to a concrete monument,

thence, running along the lands of Wendy Kandle, South 0° 15' 16" West, a distance of one hundred ninety and sixteen hundredths (190.16) feet to a concrete monument,

thence, running through the lands of Paul Stutzman with the following five (5) courses;

(1) South 1° 48' 18" West, a distance of two hundred twenty-seven and eighty-four hundredths (227.84) feet to a concrete monument,  
 (2) continuing South 1° 48' 18" West, a distance of sixty and no hundredths (60.00) feet to a concrete monument,  
 (3) continuing South 1° 48' 18" West, a distance of three hundred fifty-four and forty-four hundredths (354.44) feet to a concrete monument,  
 (4) North 87° 27' 18" West, a distance of three hundred sixty-nine and seventy-two hundredths (369.72) feet to a concrete monument,  
 (5) North 2° 32' 42" East, a distance of one hundred nineteen and forty-five hundredths (119.45) feet to a concrete monument,

thence along the lands of Marvin Miller, Paul Marnier, Betty Emmons, and Tony Kandle with the following two (2) courses:

(1) continuing North 2° 32' 42" East a distance of two hundred thirty-eight and fifty-five hundredths (238.55) feet to a concrete monument,  
 (2) North 2° 34' 00" East, a distance of seven hundred thirty-three and sixty-nine hundredths (733.69) feet to the point of beginning.

This tract contains eight and one hundred seventy-five thousandths (8.175) acres more or less.

Lots in the above described subdivision are subject to the following restrictions and conditions.

- (1) The premises shall be used solely and exclusively for single-family residential purposes.
- (2) Each single-family residence shall contain a minimum of 1250 square feet of living space.
- (3) The Developer, or his successor, reserves the right to approve the location of the driveway, the exterior design of the house and the site location of the structure on the lot. All plans, specifications, and drawings for structures shall have the written approval of the Developer prior to commencing construction.
- (4) The Developer shall direct where excess dirt will be deposited if such is to be moved from any lot in the subdivision.
- (5) No outside doghouses or kennels shall be maintained anywhere on the premises, nor shall the maintaining of any other animal or fowl be permitted on said premises.
- (6) The Developer or any owner in the subdivision may enforce any of the restrictions, conditions, agreements and covenants herein contained.

See  
 PLAT Vol. 8-Pg. 97  
 PLAT Vol. 8-Pg. 98

We hereby certify that we are the owners of the property shown and described hereon and that we hereby adopt this plan of subdivision with our free consent, establish the minimum building restriction lines, and dedicate all streets, alleys, walks, parks and other open spaces to public or private use as noted.

August 8, 1977 Paul J. Stutzman  
 August 8, 1977 Mary K. Stutzman

Acknowledged before me, a Notary Public this 8 day of August 1977

P. J. Miller  
 NOTARY PUBLIC

I hereby certify that streets, utilities and other required improvements have been installed in an acceptable manner according to County specifications in the subdivision entitled First Stutzman Subdivision

August 5, 1977 Robert K. Kaemer  
 HOLMES COUNTY ENGINEER

I hereby certify that I have approved the subdivision plat and/or agreements or provisions for sedimentation and erosion control as stated or shown hereon

August 5, 1977 Harold S. Long Jr.  
 HOLMES SOIL & WATER  
 CONSERVATION DISTRICT

I hereby certify that the Holmes County Commissioners have approved the subdivision plat as shown hereon.

August 8, 1977 Warren Messia  
 CHAIRMAN, HOLMES COUNTY  
 COMMISSIONERS

I hereby certify that the subdivision plat shown hereon has been found to comply with the Subdivision Regulations for Holmes County, Ohio with the exception of such variances if any, as are noted in the minutes of the Holmes County Regional Planning Commission and that it has been approved for recording in the office of the County Recorder.

August 9, 1977 Richard J. Pappas  
 CHAIRMAN, HOLMES COUNTY REGIONAL  
 PLANNING COMMISSION

I hereby certify that the water supply and sewage disposal system proposed for installation fully meets the requirements of the Holmes County Board of Health and the Ohio State Health Department, and are hereby approved.

August 5, 1977 James S. Hatcher  
 COUNTY HEALTH COMMISSION

RECEIVED

112079

Filed for Record this 16 day of September, 1977 at 1:51 P.M.

Recorded this 16 day of September, 1977 in Plat Book No. 28,

Page 147 Richard Pappas Holmes County Recorder  
 REC. # 21-60 2020-2

I hereby certify that the plan shown and described hereon is a true and correct survey to the accuracy required by the Holmes County Regional Planning Commission and that the monuments have been placed as shown hereon.

Aug 5, 1977 H. W. Stutzman  
 REGISTERED SURVEYOR 6357