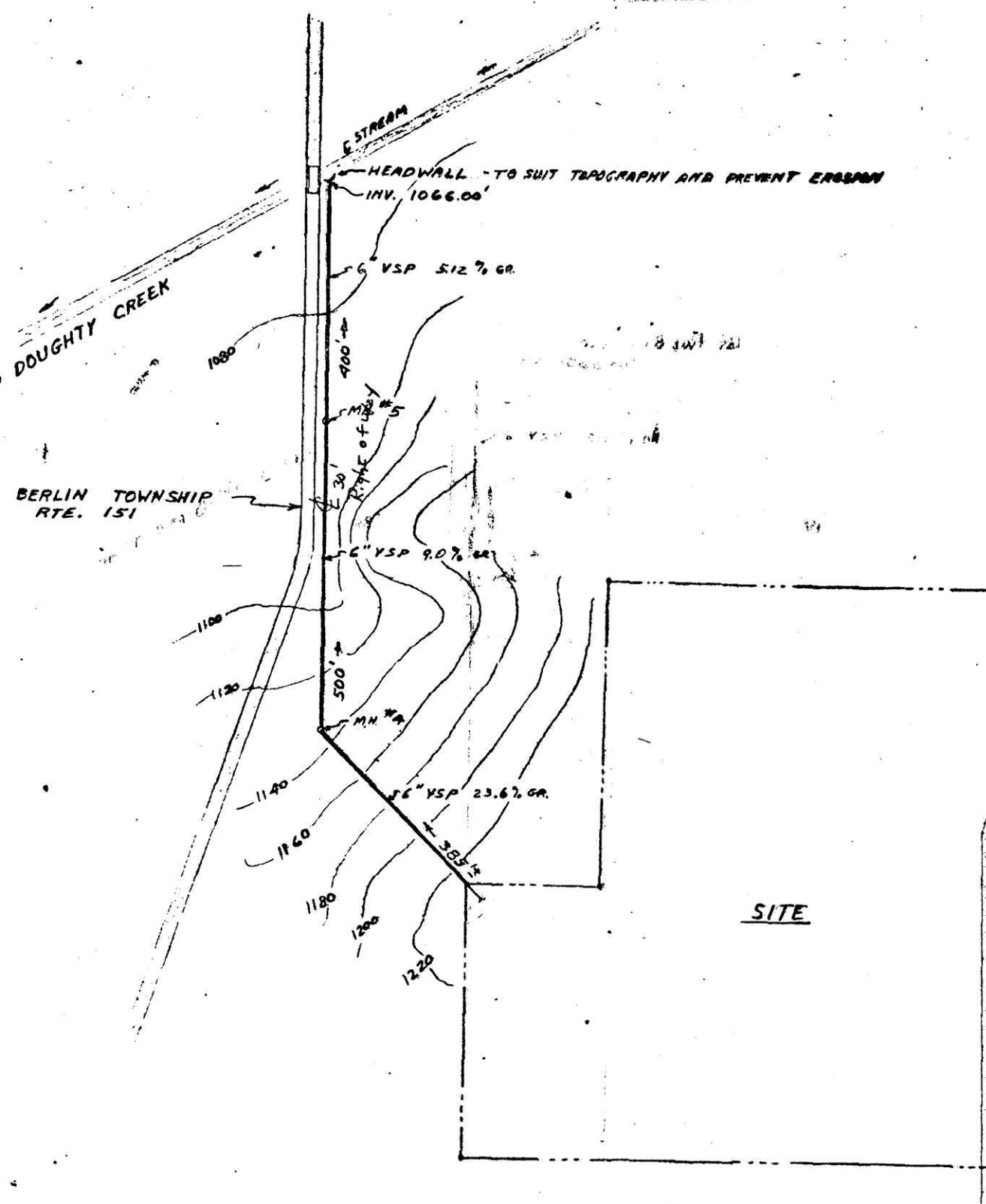


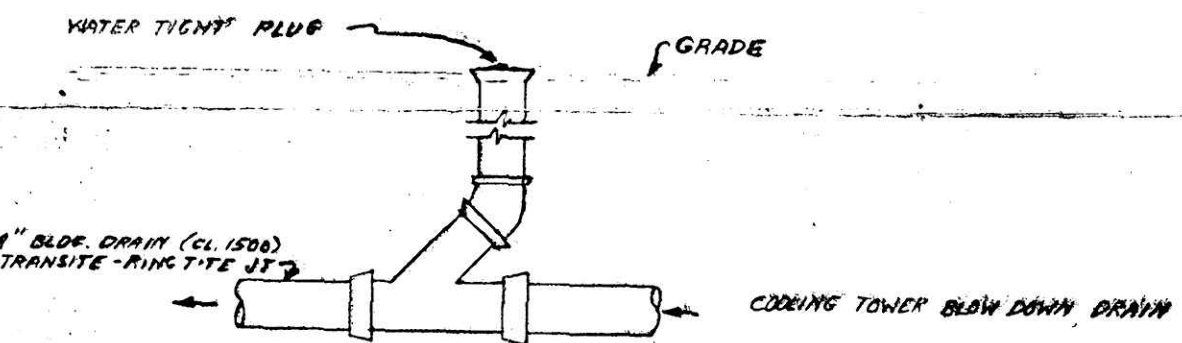
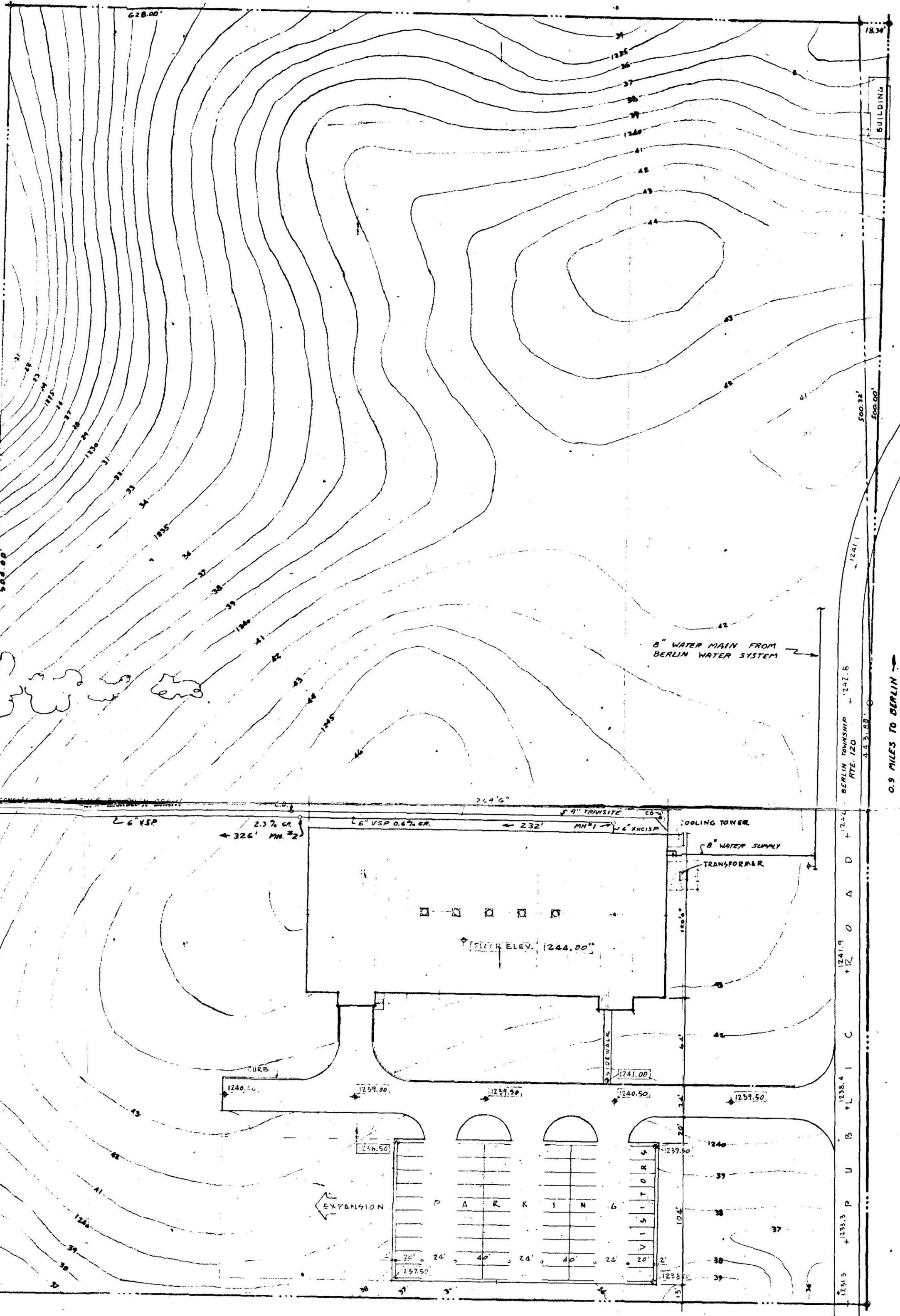
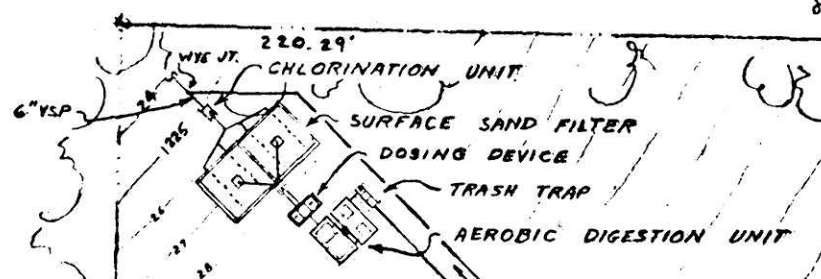
DESIGN:

MAXIMUM CAPACITY - 6000 GPD SEWAGE
 TRASH TRAP - 750 GAL. CAPACITY
 AERATION TANKS - 24 HR. DETENTION, AVG. DAILY FLOW
 AIR REQUIREMENT - 2100 CU. FT. PER LB. 5 DAY, 20°C B.O.D. PER 24 HRS.
 FINAL SETTLING TANK - 4 HOUR DETENTION, AVG. DAILY FLOW
 SURFACE SETTLING RATE - 137 GPD PER SQ. FOOT
 DOSING DEVICE - DUPLEX PUMPS, 60 GPM WITH 550 GAL. DOSE
 SAND FILTER - 11.5 GPD PER SQ. FT. SURFACE, 18" SAND, 12" GRAVEL
 CHLORINATION - 165 GAL. CONTACT TANK 1 FT. 15" DIA. 20' L.
 DRAINAGE PIPING - 6" XHVSP WITH UNILOC JOINTS 1/4" DIA. DIRT FLOOR

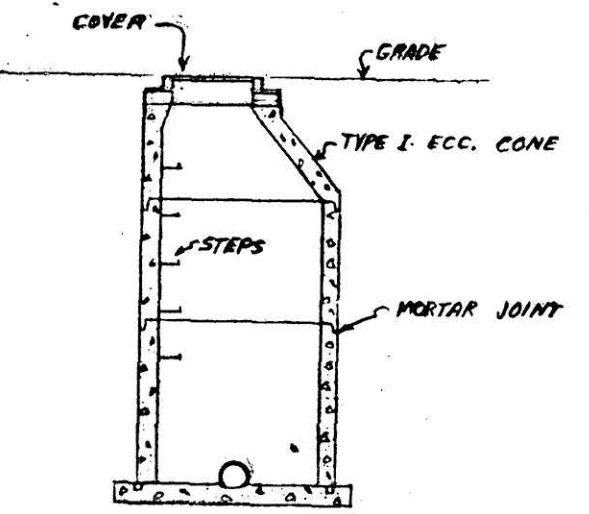


101199
 RECD: July 1, 1927
 AT 12:57 O'CLOCK P.M.
 RECORDED: July 1, 1927
 HOLMES CO. Plat Vol. 2, p. 166
 FEE: \$ 17.20
 Richard H. ... RECORDED
 Deed Vol. 198 Pg. 548

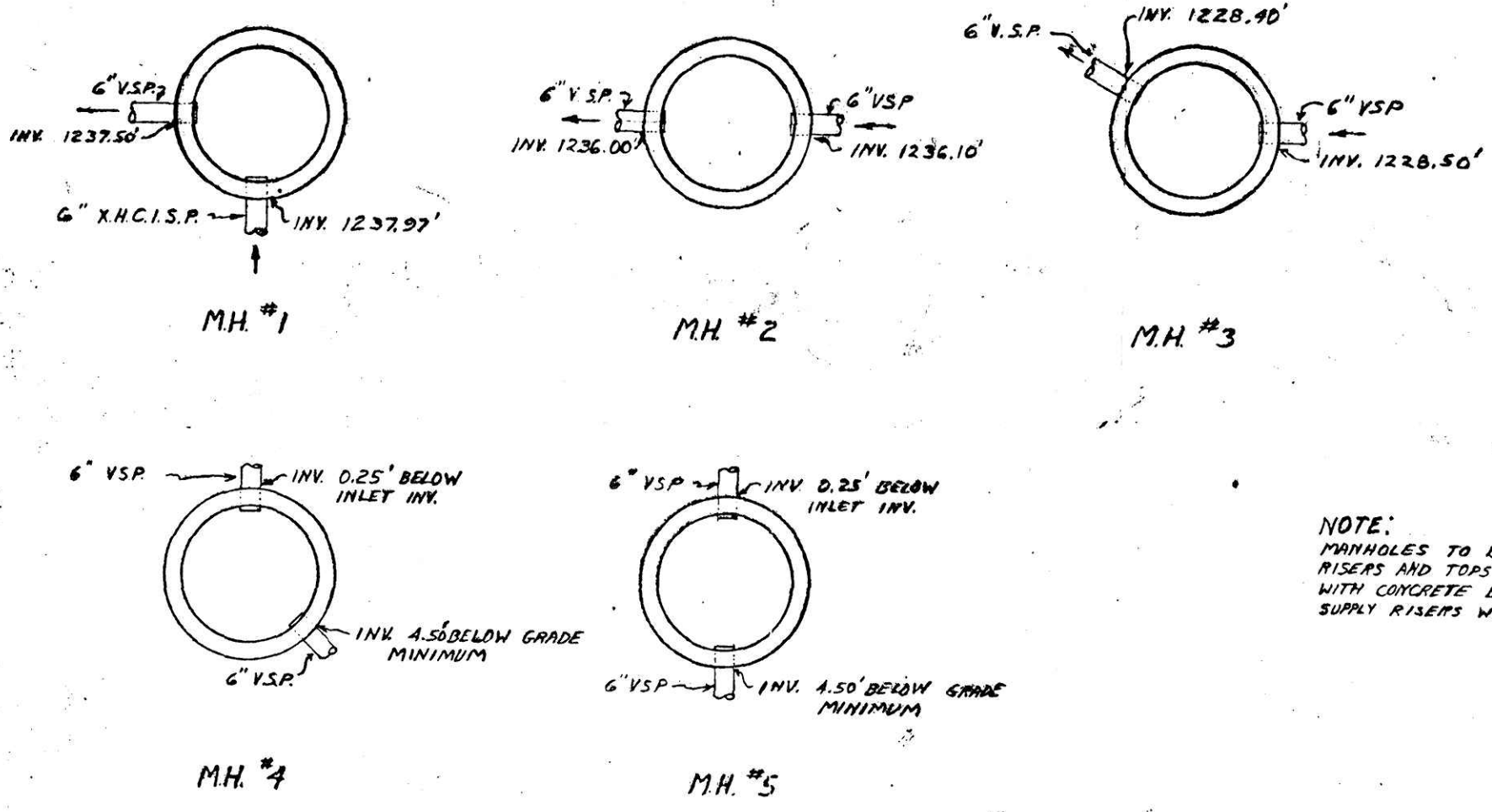
TREATED EFFLUENT DRAINAGE PLAN
 SCALE: 1" = 200'



CLEANOUT DETAIL
 SCALE: NONE



TYPICAL MANHOLE
 SCALE: NONE



MANHOLE DETAILS
 SCALE: NONE

NOTE:
 MANHOLES TO BE REINFORCED CONCRETE
 RISERS AND TOPS BY U.S. CONCRETE PIPE CO.
 WITH CONCRETE BASE AND NEENAH # R-1723 CONER.
 SUPPLY RISERS WITH CAST IRON STEPS

S I T E P L A N

A 1615 ACRE TRACT SITUATED IN THE TOWNSHIP OF BERLIN, COUNTY OF HOLMES AND STATE OF OHIO, BEING PART OF LOT #1 AND LOT #6 IN THE FOURTH QUARTER OF TOWNSHIP NINE NORTH, RANGE SIX WEST OF THE UNITED STATES MILITARY DISTRICT FROM A SURVEY BY EDWARD F. CASLER - REG. SURVEYOR #461

"Exhibit A"



ADMINISTRATIVE ENGINEERING DEPARTMENT
OWENS - ILLINOIS, INC.
 TOLEDO OHIO



DETAIL NUMBER
 SHEET NO.
 9-6-47
 8-25-47
 DATE

ADDENDUM NO. 1
 12-1-47
 ISSUED FOR
 DATE

7-5-47
 DATE
 DRAWING TITLE
 REVISION

DRAWN BY
 CHECKED BY
 PROJECT NUMBER
 44-11-49-2

SCALE: AS SHOWN
 DATE
 CLOSURE DIVISION
 PLANT #49
 BERLIN, OHIO

SHEET NUMBER
 M-4
 DRAWING NUMBER
 A-2634