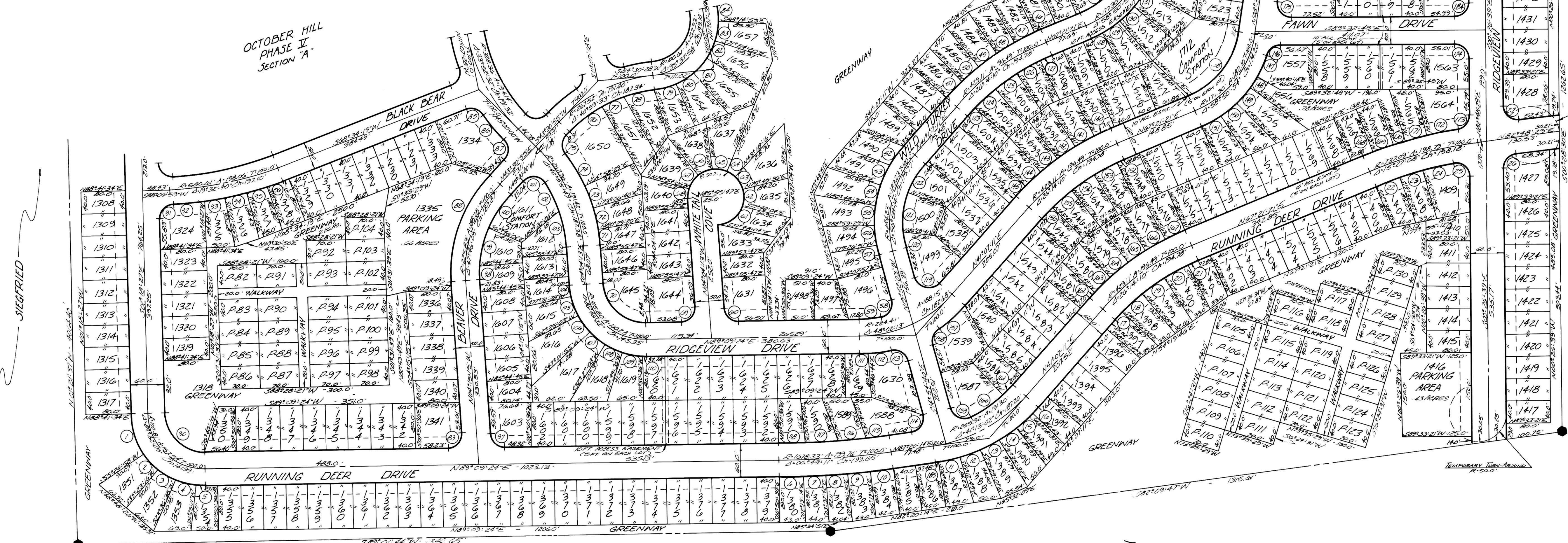


1. N107°54'44"W D:1075.10 C:1.75 Ch:36.48	21. N107°55'12"E D:1075.10 C:1.75 Ch:36.48	41. N107°55'52"E D:1075.10 C:1.75 Ch:36.48	61. S107°52'30"W D:1075.10 C:1.75 Ch:36.48	81. S107°52'30"W D:1075.10 C:1.75 Ch:36.48	101. N107°53'12"E D:1075.10 C:1.75 Ch:36.48	121. N107°53'12"E D:1075.10 C:1.75 Ch:36.48	141. N107°53'12"E D:1075.10 C:1.75 Ch:36.48	161. N107°53'12"E D:1075.10 C:1.75 Ch:36.48	181. N107°53'12"E D:1075.10 C:1.75 Ch:36.48
--	---	---	---	---	--	--	--	--	--

OCTOBER HILL  
PHASE II  
SECTION "A"



REC'D. October 29, 1975  
AT 3:42 O'CLOCK P.M.  
RECORDED. October 29, 1975  
HOLMES CO. Vol. 29 pg. 159  
FEE: \$ 15.64  
Robert A. Schaefer RECORDER  
25-23-122

OCTOBER HILL  
PHASE V  
SECTION "B" SHEET 4 OF 4  
SCALE IN FEET  
0 100 200 300