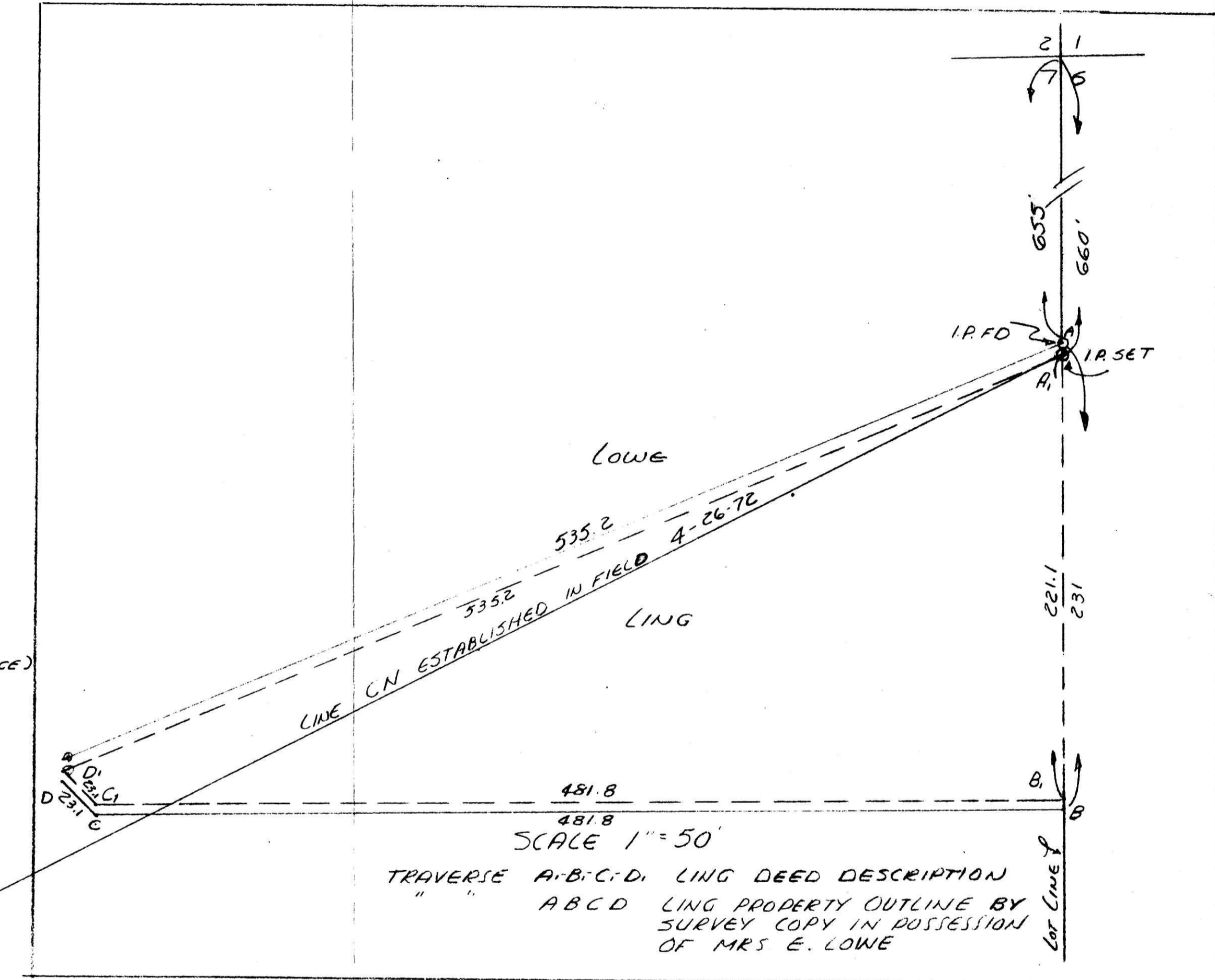
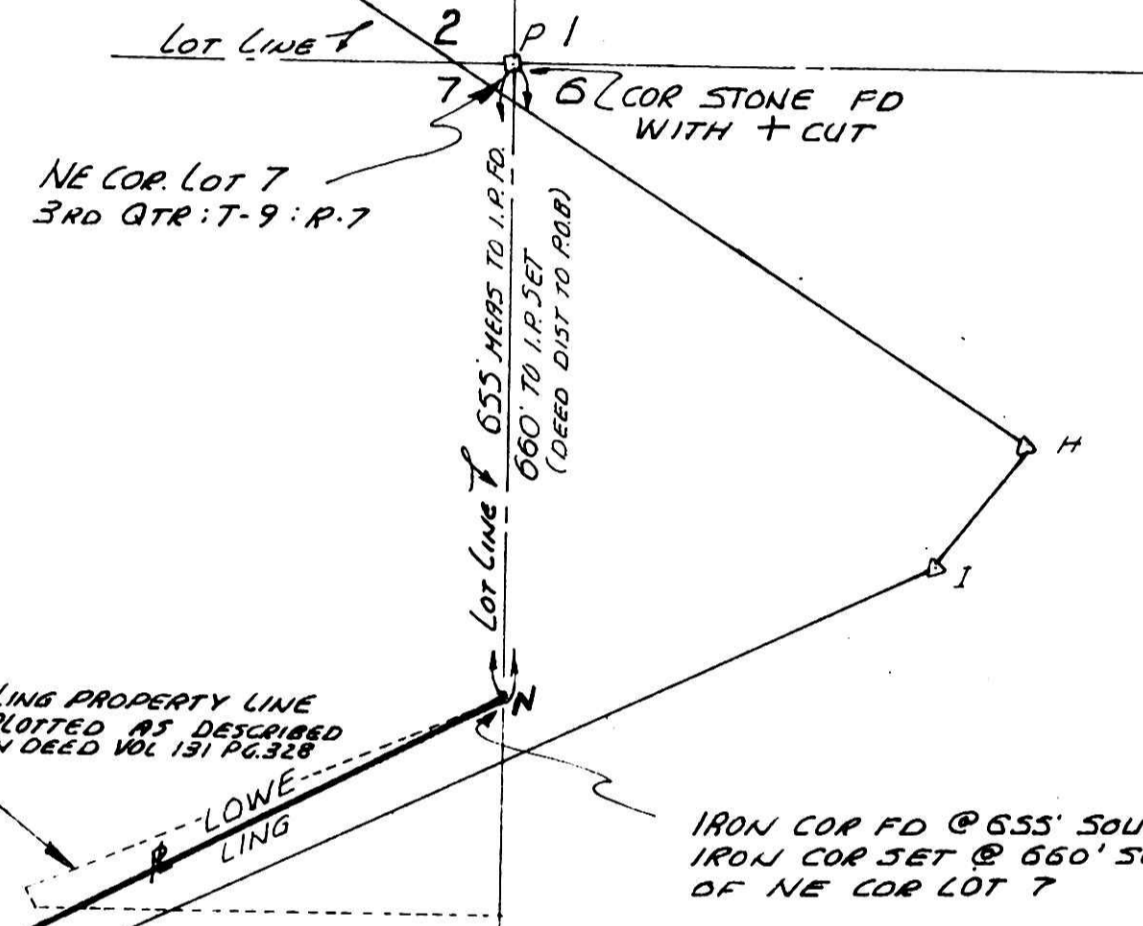
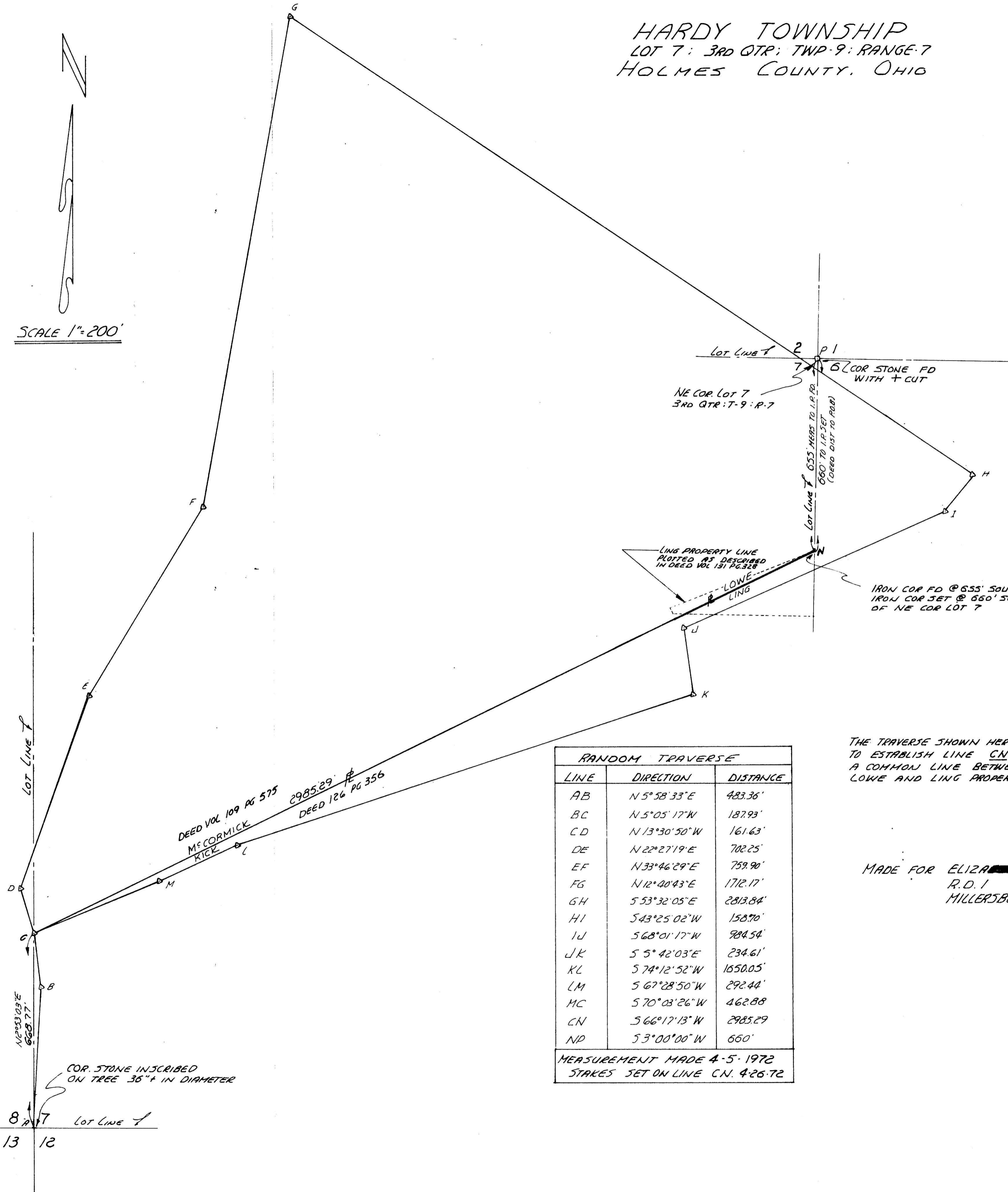


HARDY TOWNSHIP  
 LOT 7: 3RD QTR; TWP-9: RANGE-7  
 HOLMES COUNTY, OHIO

SCALE 1"=200'



RANDOM TRAVERSE		
LINE	DIRECTION	DISTANCE
AB	N 5° 38' 33" E	483.36'
BC	N 5° 05' 17" W	187.93'
CD	N 13° 30' 50" W	161.63'
DE	N 22° 27' 19" E	702.25'
EF	N 33° 46' 29" E	759.90'
FG	N 12° 40' 43" E	1712.17'
GH	S 53° 32' 05" E	2813.84'
HI	S 43° 25' 02" W	1508.70'
IJ	S 68° 01' 17" W	984.54'
JK	S 5° 42' 03" E	234.61'
KL	S 74° 12' 52" W	1650.05'
LM	S 67° 28' 50" W	292.44'
MC	S 70° 03' 26" W	462.88'
CN	S 66° 17' 13" W	2985.29'
ND	S 3° 00' 00" W	660'

MEASUREMENT MADE 4-5-1972  
 STAKES SET ON LINE CN. 4-26-72

THE TRAVERSE SHOWN HEREON MADE TO ESTABLISH LINE CN BEING A COMMON LINE BETWEEN THE LOWE AND LING PROPERTIES.

MADE FOR ELIZABETH LOWE  
 R.D. 1  
 MILLERSBURG OHIO

I CERTIFY THIS SURVEY TO ESTABLISH LINE CN TO BE CORRECT TO THE BEST OF MY KNOWLEDGE.  
 COMPLETED 6-22-72

James A. Berry  
 JAMES A. BERRY P.S. 4995  
 R. W. Gasbarre P.S. 4153  
 R.W. GASBARRE ASSOC.  
 P.O. BOX 44  
 WOOSTER OHIO 44691

95765  
 FILED June 26, 1972  
 9:08 P.M. PLOOCK  
 RECORDED June 26, 1972  
 HOLMES COUNTY VOL. 3 PG. 240  
 FILE 141.06  
 Charles Graves RECORDER