

MAP
 SHOWING LOCATION
 OF A PARCEL OF LAND
 DEEDED BY W — B
 H. L. LOGSDON
 TO
 PEOPLES CHURCH

Section 19, Township 9, R. 7
 Village of Millersburg
 Holmes County, Ohio

Scale 1" = 100 ft.

June 1957

Drawn from a
 Survey by

William Bellinger

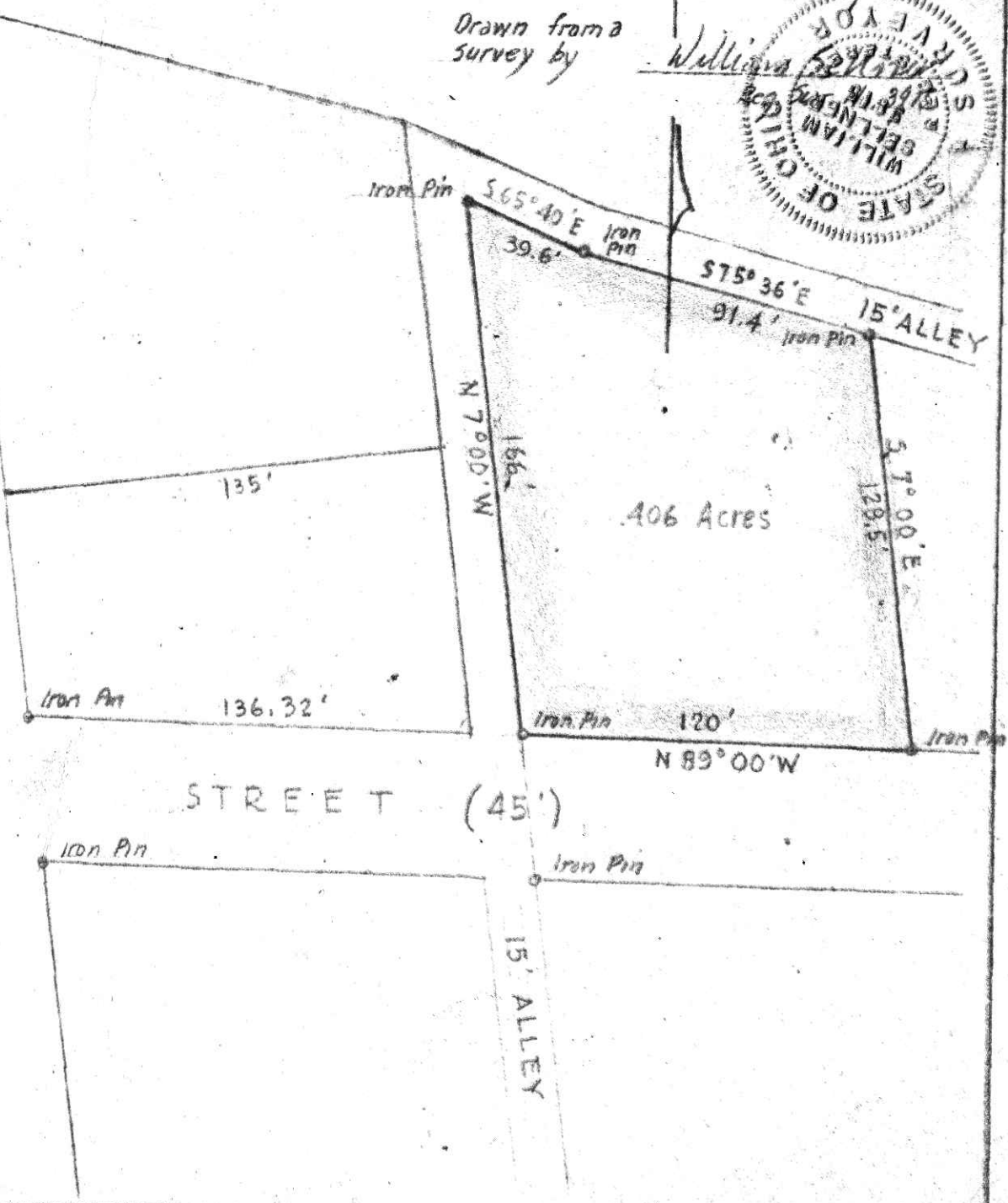


Millersburg

SO. WASHINGTON ST.

U.S. Route 62

Killbuck



53094

Received *October 11* 1957

At *3:50* o'clock *P.* M

Recorded *October 11* 1957

In Holmes County

Record of *Plats*

Vol. *2* Page *96*

W. E. Anderson Recorder

Recorder's Fee \$ *1.00*