

# LOCATION PLAN HOL-62-(21.09-21.38) 1957

SCALE 1" = 400'

52788

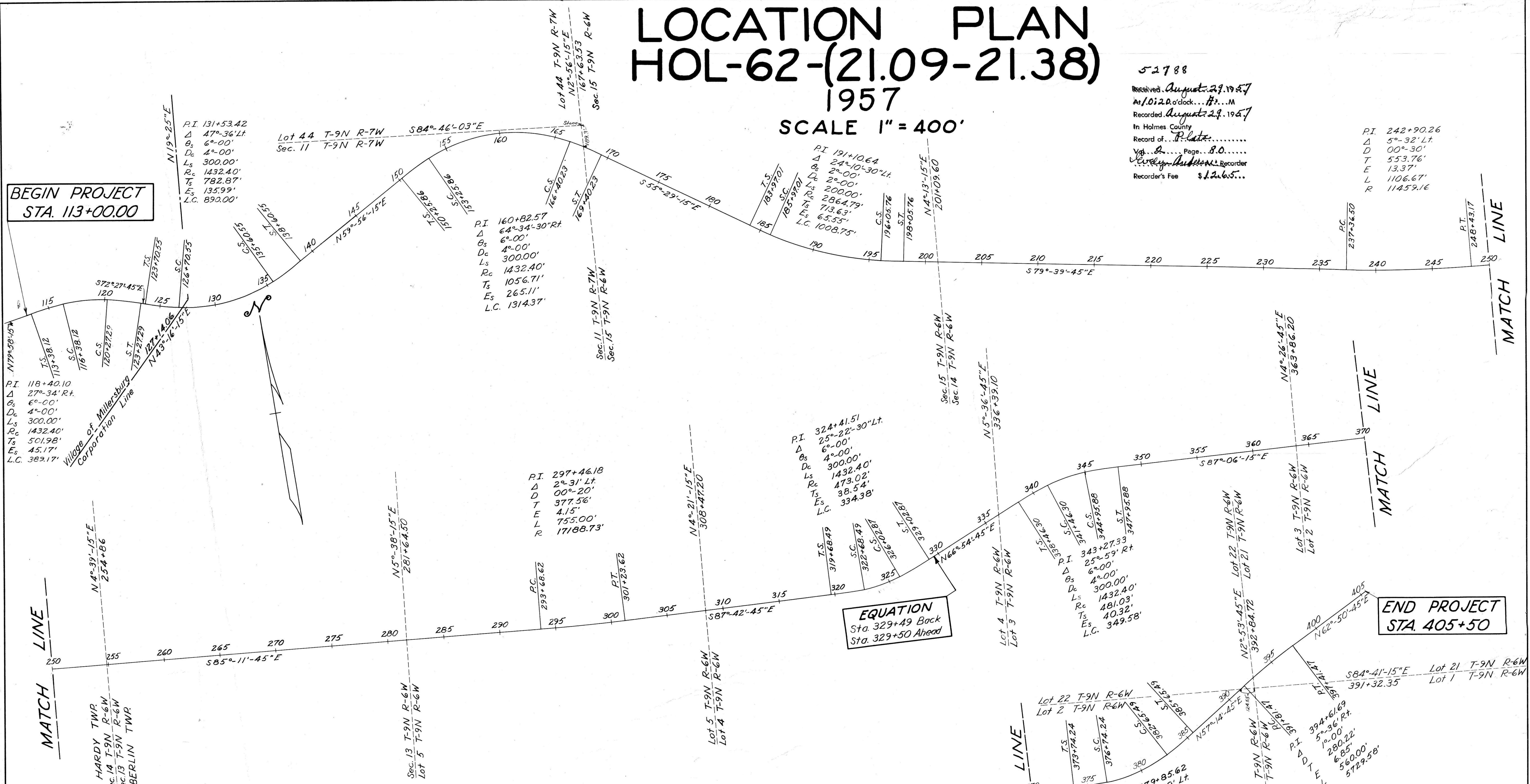
Received August 29, 1957  
At 10:20 o'clock P.M.  
Recorded August 29, 1957  
In Holmes County  
Record of...  
Vol. 2, Page 80  
C. C. Jinks, Recorder  
Recorder's Fee \$12.65

PI 242+90.26  
Δ 5°-32' Lt.  
D 00°-30'  
T 553.76'  
E 13.37'  
L 1106.67'  
R 11459.16

BEGIN PROJECT  
STA. 113+00.00

END PROJECT  
STA. 405+50

EQUATION  
Sta. 329+49 Back  
Sta. 329+50 Ahead



CENTER LINE MONUMENTS WILL BE PLACED 6" BELOW GROUND LINE BEFORE OR AFTER CONSTRUCTION

Monuments will be set as per sketch shown at left, at the following Stations.

SC. 116+38.12	POT. 255+00	POT. 335+50	S.C. 153+25.86	T.S. 113+38.12		P.O.C. 160+00
POT. 132+00	POT. 262+00	T.S. 338+46.30	C.S. 166+40.23	S.T. 123+27.29		
C.S. 135+60.55	POT. 269+00	S.C. 341+46.30	S.T. 169+40.23	T.S. 123+70.55		C.S. 120+27.29
S.T. 138+60.55	POT. 275+50	C.S. 344+95.88	POT. 176+00	S.C. 126+70.55		
T.S. 150+25.86	POT. 282+50	S.T. 347+95.88	T.S. 183+97.01		C.S. 196+05.76	
S.T. 198+05.76	POT. 289+00	POT. 354+00	S.C. 185+97.01			
POT. 204+00	P.C. 293+68.62	POT. 362+00	POT. 190+00		P.O.T. 369+00	
POT. 210+00	P.T. 301+23.62	POT. 405+50	T.S. 373+74.24			
POT. 217+00	POT. 307+50		S.C. 376+74.24			
POT. 223+00	POT. 314+00		C.S. 382+65.49			
POT. 230+00	T.S. 319+68.49		S.T. 385+65.49			
P.C. 237+36.50	S.C. 322+68.49		P.C. 391+81.49			
P.O.C. 243+00	C.S. 326+02.87	POT. 401+50				
P.T. 248+43.17	S.T. 329+02.87					

I hereby certify that this plat is correct to the best of my knowledge and belief.  
C. C. Jinks  
 Division Engineer  
 Date: 8-1-57