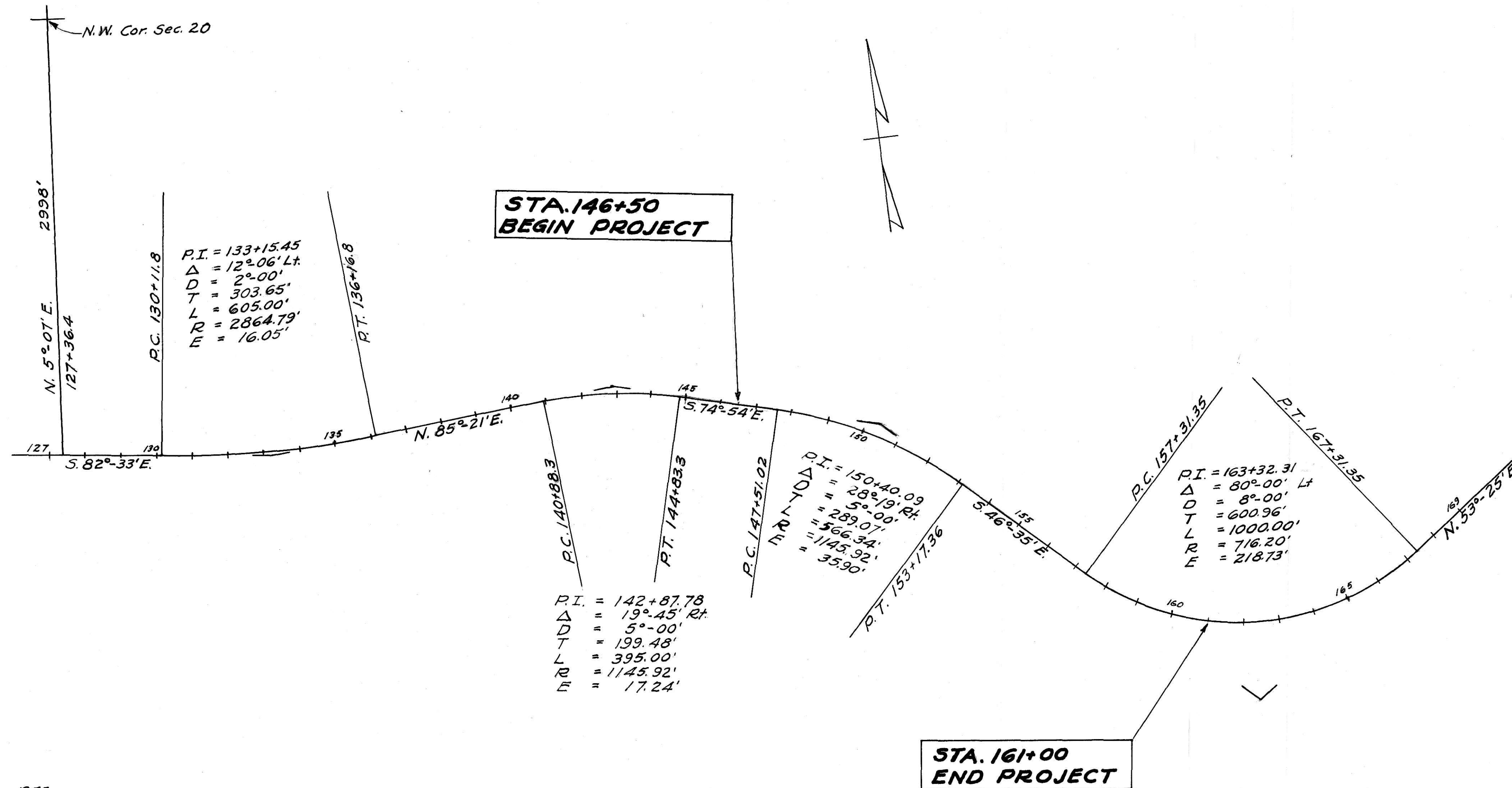
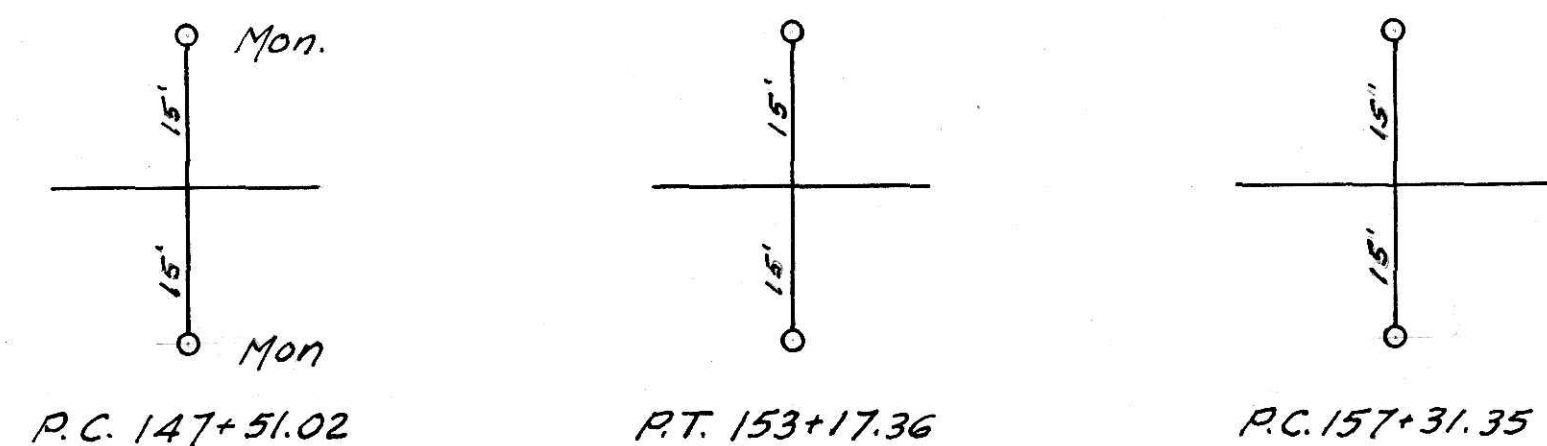


LOCATION PLAN HOL-643-2.77 1955 SCALE 1" = 200'



48588
 RECEIVED Apr. 6 1955
 AT 10:25 O'CLOCK A.M.
 RECORDED May 16 1955
 IN Holmes COUNTY
 RECORD OF PLATS Vol. 2
 PAGE 40
 Evelyn Anderson RECORDER
 RECORDER'S FEE \$10.00

Monuments Will Be Set 6" Below Berm Line
CENTER LINE REFERENCE MONUMENTS WILL BE PLACED BEFORE OR AFTER CONSTRUCTION



I hereby certify that this plat is correct to the best
 of my knowledge and belief.
 DEAN R. SEYER 3-30-55
 Division Engineer