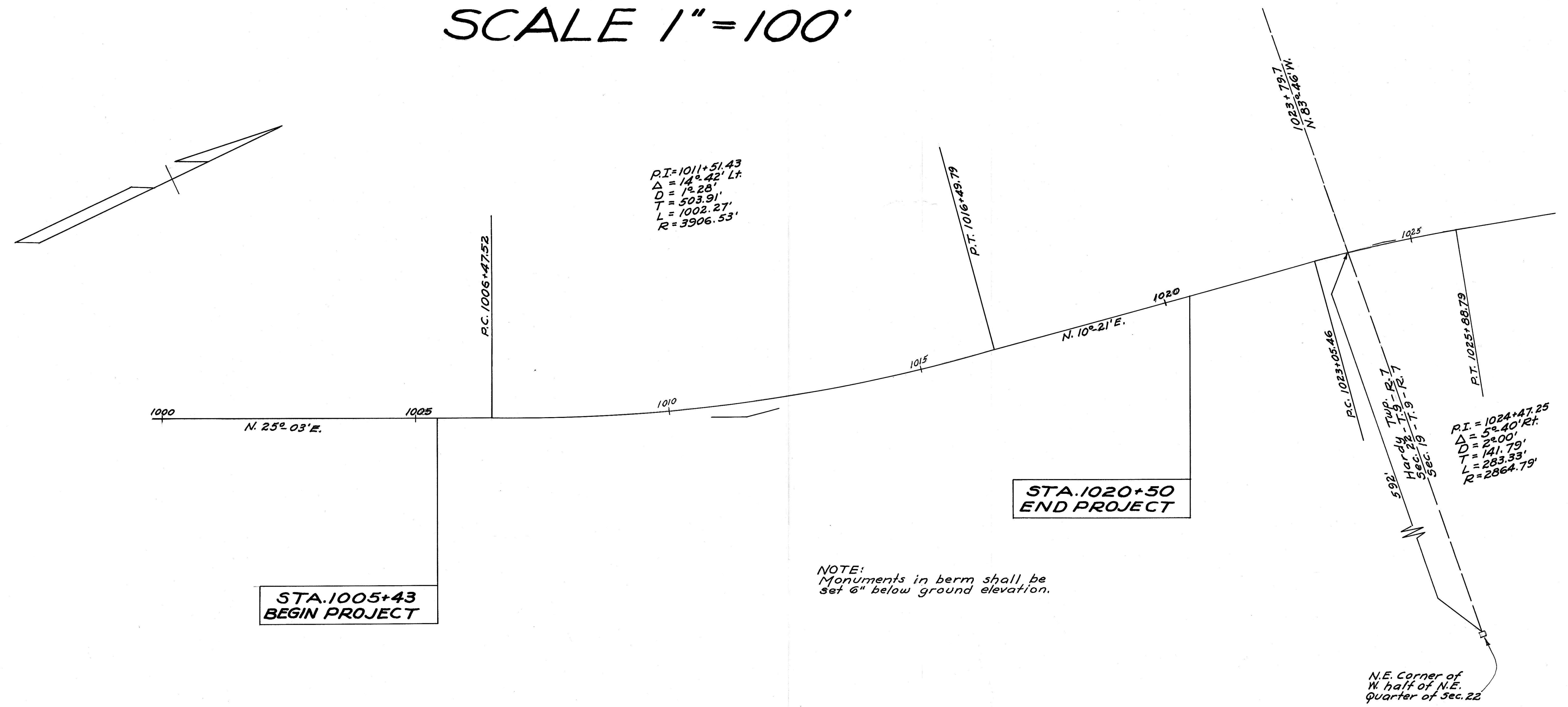
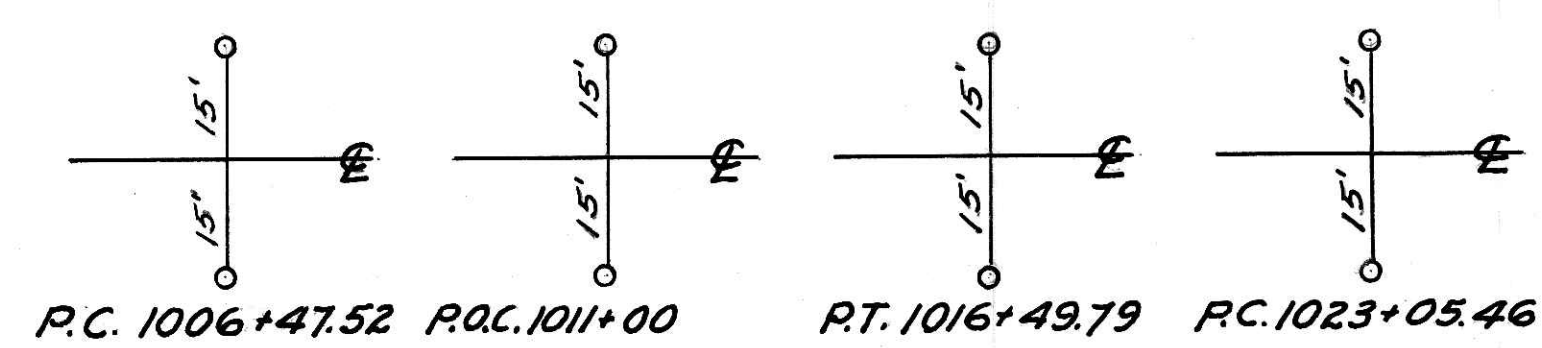


# LOCATION PLAN HOL-62-(19.04-19.07) 1954 SCALE 1"=100'



CENTER LINE REFERENCE MONUMENTS WILL BE SET BEFORE OR AFTER CONSTRUCTION

47854  
 Received Sept. 17, 1954  
 At 1:30 O'Clock P.M.  
 Recorded October 27, 1954.  
 In Holmes County  
 Record of Plats Vol. 2  
 Page 36  
 Carolyn Anderson Recorder  
 Recorder's Fee \$10.00



I hereby certify that this plat is correct  
 to the best of my knowledge and belief.  
 Signed, DEAN R. SEVERS 9-7-54  
 DIVISION ENGINEER DATE