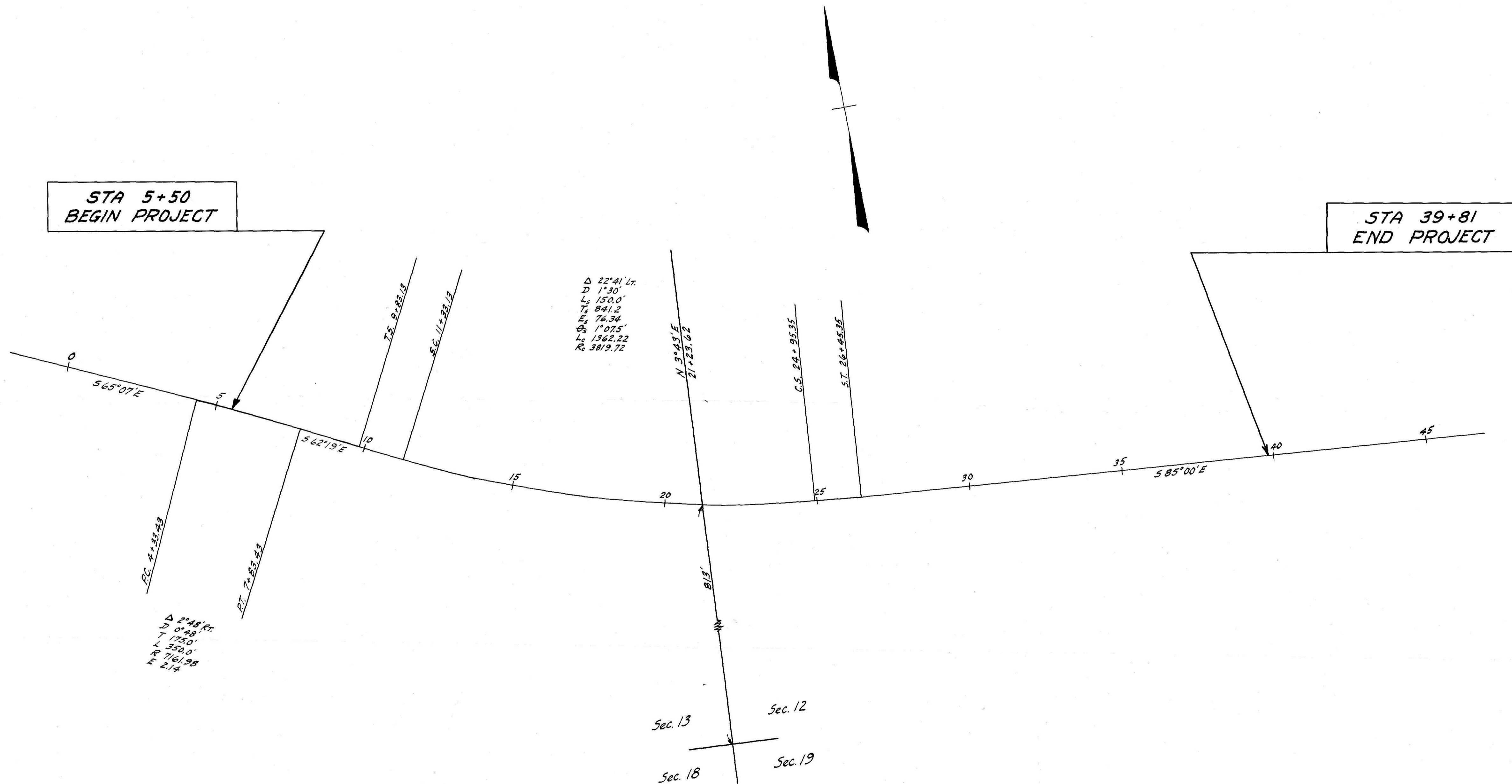


# LOCATION PLAN HOL-39-(16.69-17.29) 1951 SCALE: 1"=200'

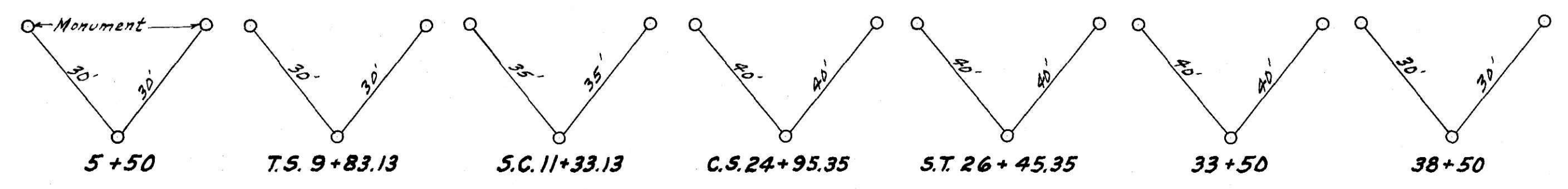


$\Delta$  22°41' Lt.  
 D 1°30'  
 Ls 150.0'  
 Ts 841.2  
 Es 76.34  
 $\Phi_s$  1°075'  
 Lc 1362.22  
 Rc 3819.72

$\Delta$  2°48' Rt.  
 D 0°48'  
 Ls 175.0'  
 Ts 350.0'  
 Es 1761.98  
 E 214

43384  
 RECEIVED SEPT. 20 19 51  
 AT 1:15 O'clock P.M.  
 RECORDED NOV. 17 19 51  
 IN HOLMES COUNTY  
 RECORD OF PLAT VOL. 2  
 PAGE 32  
 Evelyn Anderson RECORDER  
 RECORDER'S FEE \$6.50

**CENTER LINE REFERENCE MONUMENTS WILL BE SET BEFORE OR AFTER CONSTRUCTION**



I hereby certify that this plat  
 is correct to the best of my  
 knowledge and belief.  
 Signed Dawson W. Smith Division Engineer  
 Date 9-19-51