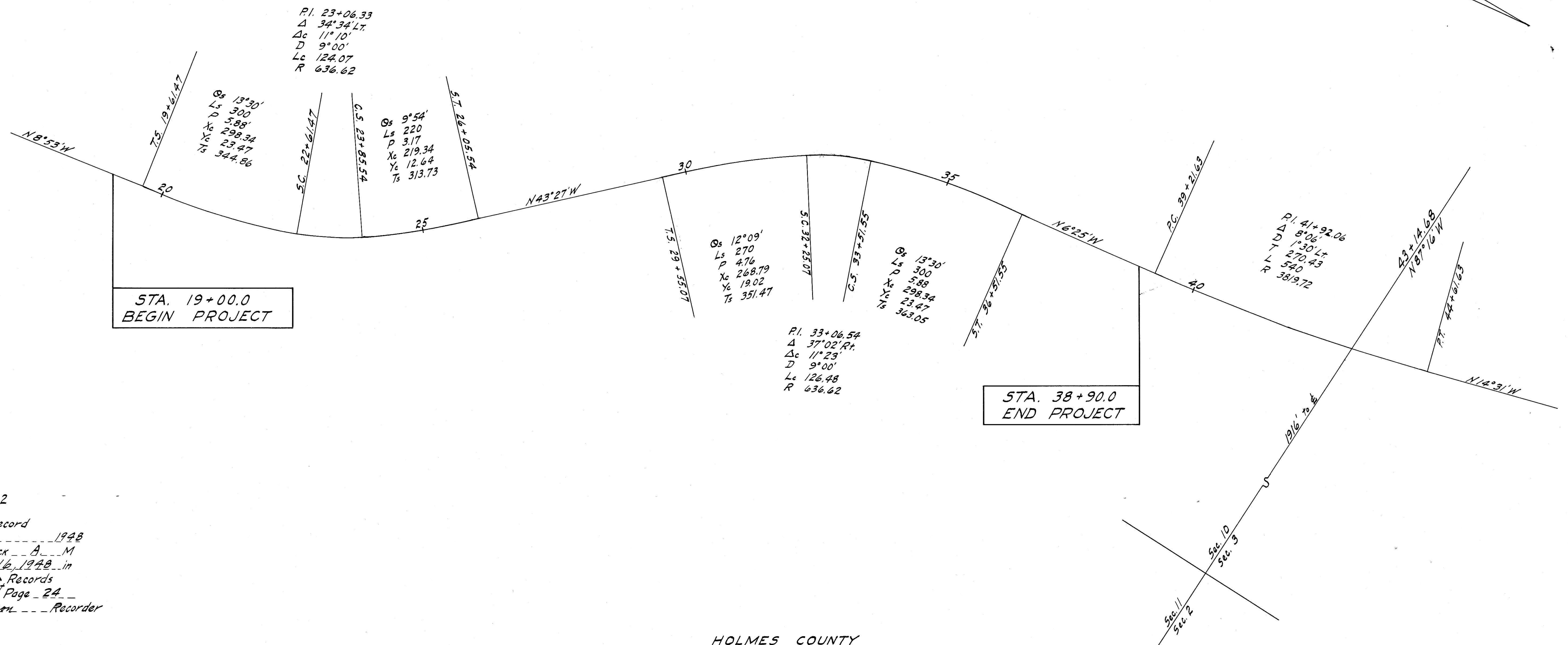


LOCATION PLAN S.H. 342 SEC. B-2 (PT) MILLERSBURG-WOOSTER ROAD 1948

SCALE 1" = 100'



29702

Received for record
 November 2 1948
 At 11:00 O'clock A.M.
 Recorded Nov. 16, 1948 in
 Holmes County Records
 Volume 2 Page 24
 Evelyn Anderson Recorder
 Fee \$ 7.50

HOLMES COUNTY
 PRAIRIE TOWNSHIP
 SEC'S. 10 & 3 T-13N R-13W

CENTER LINE REFERENCE MONUMENTS WILL BE SET BEFORE OR AFTER CONSTRUCTION

T.S. 19+61.47	S.C. 22+61.47	C.S. 23+85.54	S.T. 26+05.54	T.S. 29+55.07	S.C. 32+25.07	C.S. 33+51.55	S.T. 36+51.55	P.C. 39+21.63	P.T. 44+61.63
Monument	Monument	Monument	Monument	Monument	Monument	Monument	Monument	Monument	Monument

I hereby certify that this plat is correct to the best of my knowledge and belief.

Signed E. R. McCullough Division Engineer
 Date 10-26-48