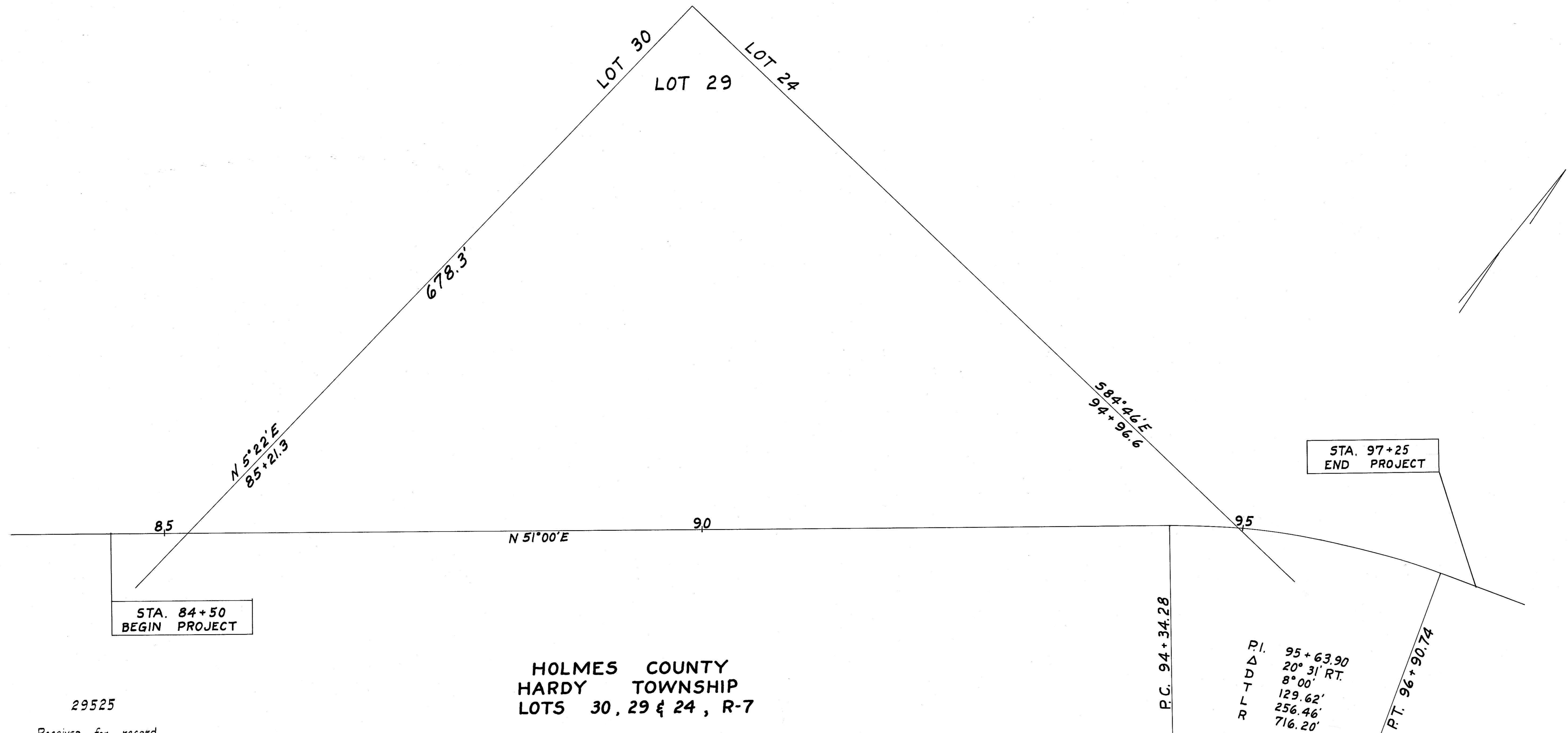


LOCATION PLAN HOL-241-1.60 1948

SCALE 1"=50'

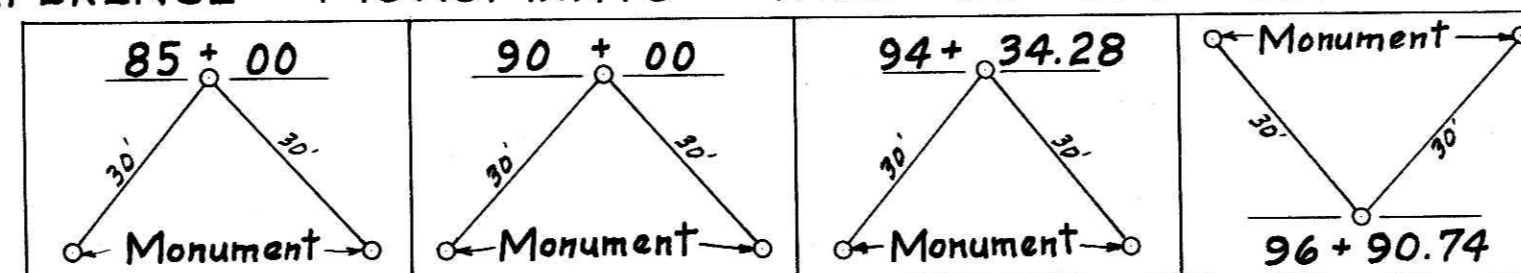


HOLMES COUNTY
HARDY TOWNSHIP
LOTS 30, 29 & 24, R-7

29525

Received for record
September 21st, 1948
At 11:30 O'clock A.M.
Recorded October 21st, 1948 in
Holmes County Records
Volume 2 Page 22
C. G. Anderson Recorder
Feb 26, 1948

CENTER LINE REFERENCE MONUMENTS WILL BE SET BEFORE OR AFTER CONSTRUCTION



I hereby certify that this plat is correct to the best of my knowledge and belief.

Signed E. R. M. Cullough Division Engineer
Date Sept. 21, 1948