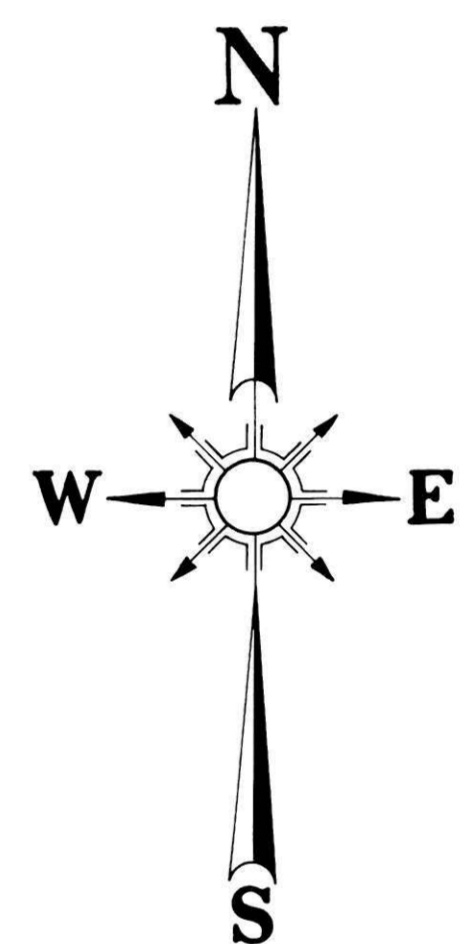
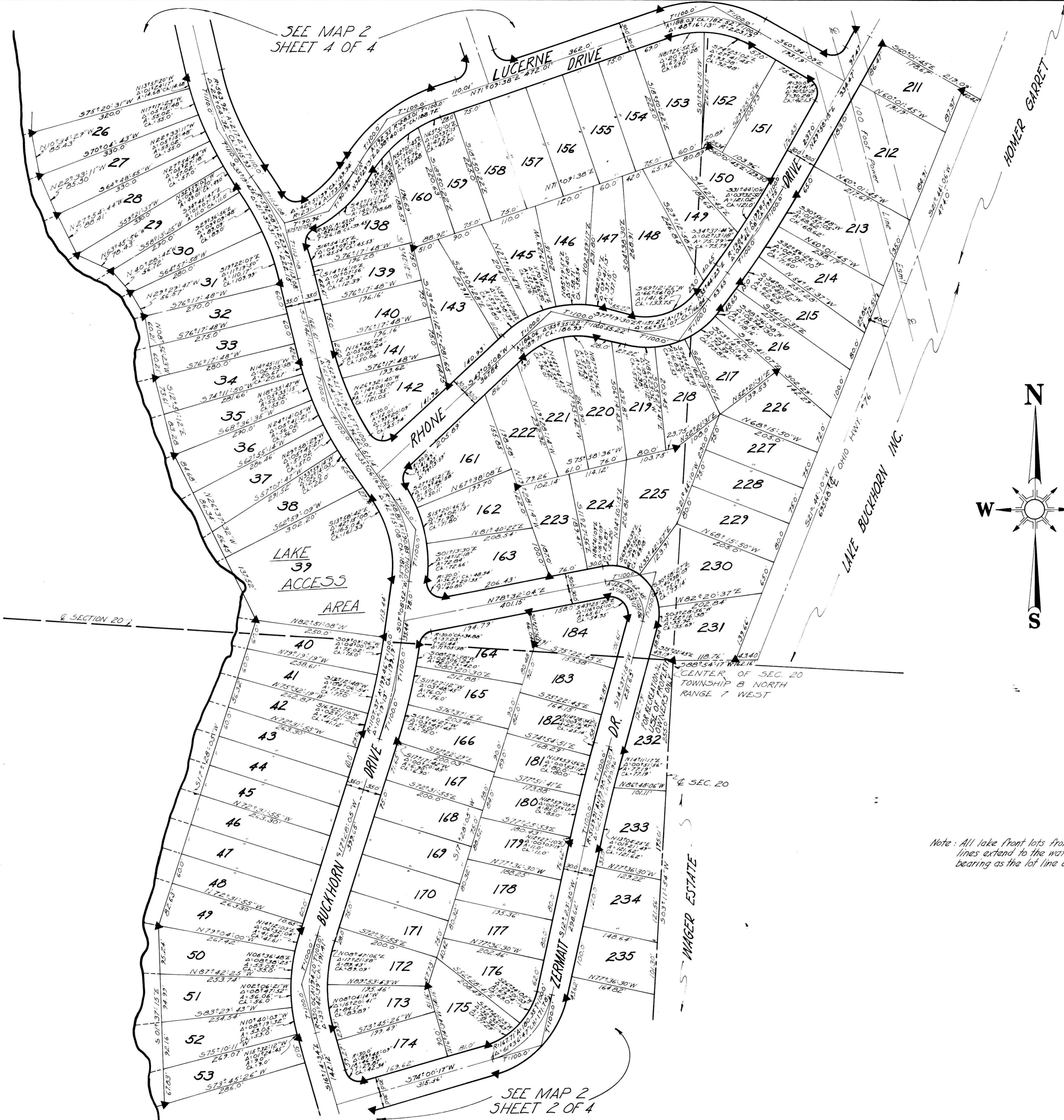


LAKE BUCKHORN



Note: All lake front lots front on water and lot lines extend to the waters edge on the same bearing as the lot line unless otherwise shown.

86221

REC'D: September 25-1968  
 AT 8:40 O'CLOCK A.M.  
 RECORDED: September 25-1968  
 HOLMES CO. Plat Vol. 2, PG. 5A  
 FEE: \$7.92  
 Cowley, Anderson RECORDER

LAKE BUCKHORN  
 SUBDIVISION  
 MAP NO. 2 - SHEET 3 OF 4