

PLAT

OF MINNIE A. GLASBO'S Addition of inlots in the Village of Millersburg, Ohio, being a subdivision of the west part of OUT LOT No. 100.

I hereby certify that I am the proprietor of the Lands hereon shown and that the Lands hereon shown as Streets are hereby granted and dedicated for Streets and public use

Signed *Minnie A. Glasbo.*

I hereby certify that this plat is true and correct as Surveyed by me this 26<sup>th</sup> day of March, 1928. W. L. Reidenbach, Surveyor.

Scale 1" = 50'

I hereby certify that this Sub-Division has been approved by the Council of the incorporated Village of Millersburg, Ohio, this 6<sup>th</sup> day of Aug. 1928

*A. Jordan* Mayor. *Sam Franke Jr.* Clerk

Received for Record August 9<sup>th</sup> 1928, at 10<sup>th</sup> P.M.

Transferred August, 9<sup>th</sup> 1928

Recorded August 28<sup>th</sup> 1928 *Rose G. Limp*, Recorder

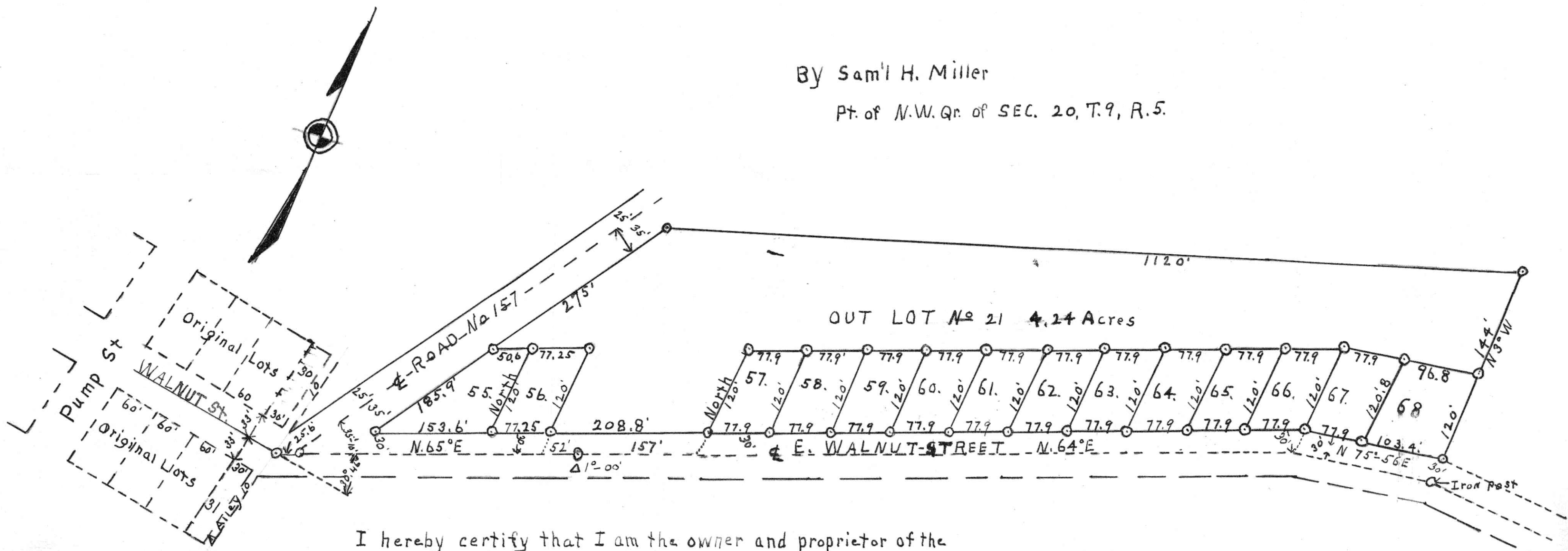
*F. E. Aultman*, Co. Auditor

PLAT OF

ADDITION To the Village of WALNUT CREEK Formerly NEW CARLISLE - HOLMES COUNTY, OHIO.

By *Sam'l H. Miller*

Pt. of N.W. Qr. of SEC. 20, T.9, R.5.



I hereby certify that I am the owner and proprietor of the lands hereon shown, that this Plat is true and correct and that the ground shown for Streets is hereby dedicated for public use Signed this 13<sup>th</sup> day of August, 1927.

*Samuel H. Miller*, Proprietor.

This Addition of inlots to the Village of Walnut Creek is hereby approved Aug. 15<sup>th</sup> 1927

*H. H. Allison.*

*J. A. Mullet.*

*G. W. Hanna.*

County Commissioners.

I hereby certify that this Plat is true and correct as surveyed and Platted by me this 5<sup>th</sup> day of Aug 1927.

*W. L. Reidenbach*, Surveyor.

Surveyor.

Transferred SEP. 21, 1927.

Received Sept. 26<sup>th</sup>, 1927, at 10<sup>th</sup> A.M. Recorded AUG. 31<sup>st</sup>, 1928.

*ROSE G. LIMP*, CO. RECORDER.

*F. E. AULTMAN*, CO. AUDITOR.