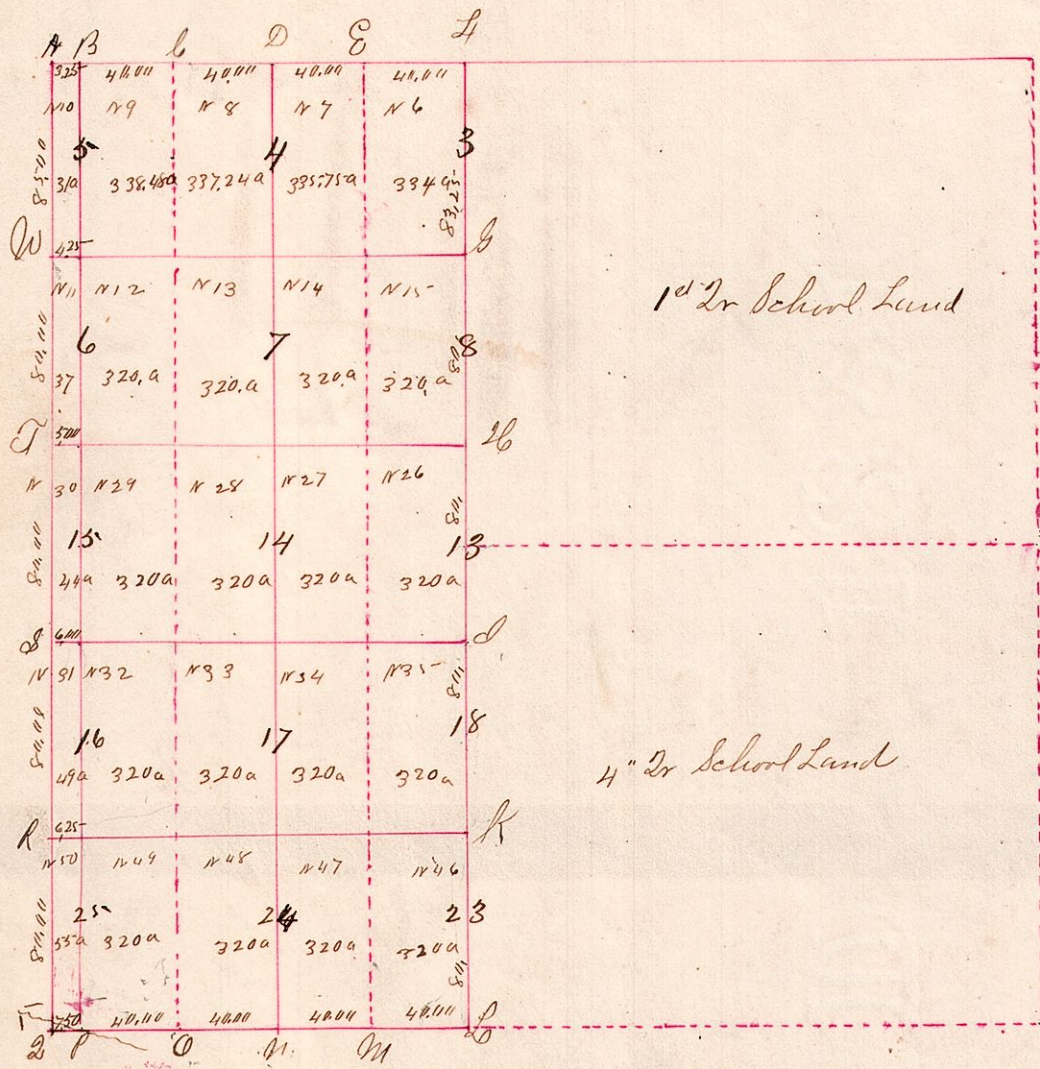


R6 T9 W's Congress



Exterior Corners

Station	Bearing	Distance	Course	Substation	Bearing	Distance	Course	Substation
A	S 65 E	24	S 65 E	7	N 12	11.12	N Oak	20 N 31 W 39
"	W Oak	34	N 24 E	7	29.30	do	34 S 9 W 13	
B	Elm	12	S 28 W	16	7.8	Sugar	12 S 43 W 39	
"	Beech	18	S 39 E	39	13.14	W Oak	20 S 79 E 36	
C	W Oak	36	S 54 W	33	9.10	W Oak	30 N 57 E 17	
"	do	20	S 13 E	33	11.12	Hickory	12 S 26 W 32	
D	Saplar	30	S 49 E	13				
"	W Oak	20	S 48 W	46				
E	Hickory	16	S 3 W	31				
"	W Oak	12	N 65 W	6				
F	W Oak	24	N 79 W	32				
"	W Oak	15	N 74 E	27				
G	Maple	10	N 89 W	36				
"	Hickory	12	S 58 E	20				
H	W Oak	12	N 37 W	7				
"	W Oak	24	S 32 E	9				
I	Hickory	20	N 14 W	16				
"	Maple	36	S 24 W	52				
J	Sugar	16	N 84 W	26				
"	Maple	12	S 33 W	32				
K	Beech	7	N 21 E	14				
"	W Oak	32	S 53 E	28				
L	Hickory	14	N 14 E	13				
"	Doan	10	S 64 W	28				
M	W Oak	30	N 24 W	37				
"	Maple	12	N 81 E	29				
N	Sum	12	N 18 E	15				
"	Maple	16	S 75 E	26				
O	Maple	10	N 44 W	18				
"	Elm	18	East	22				
P	Hickory	20	N 79 W	11				
"	do	12	S 66 E	18				
Q	W Oak	12	S 72 E	6				
"	do	12	S 49 W	20				
R	W Oak	20	N 46 E	10				
"	do	14	S 6 W	36				
S	Maple	12	S 35 E	13				
"	do	11	N 88 W	40				
T	W Oak	36	S 74 E	5				
"	do	26	N 78	50				

Interior Sec Corners

17, 18, 23, 24	W Oak	24	N 41 E	33
do	do	34	S 16 W	39
16, 17, 24, 25	do	14	S 2 W	7
do	Maple	16	N 4 E	24
13, 14, 17, 18	Elm	12	S 57 E	22
do	Blacknut	24	S 80 W	22
14, 15, 16, 17	W Oak	36	S 71 W	56
do	do	40	N 65 E	43
7, 8, 13, 14	Saplar	7	N 59 E	7
do	Maple	24	S 67 W	55
6, 7, 14, 15	W Oak	16	N 12 W	22
do	do	15	S 1 E	23
3, 4, 7, 8	Beech	10	N 33 E	16
do	do	10	S 61 W	8
4, 6, 7	W Oak	30	N 64 E	11
do	Maple	18	West	17

Interior 1/4 Sec Corners

33, 34, 47, 48	W Oak	20	S 85 E	16
do	do	24	S 50 W	33
31, 32	Hickory	12	N 3 W	11
49, 50	Elm	20	S 3 E	41
33, 34	Hickory	14	S 2 E	52
27, 28	do	14	S 41 W	33
29, 30	W Oak	16	N 42 W	32
31, 32	Hickory	14	S 24 W	12
13, 14	do	12	S 40 W	17
27, 28	Sugar	9	S 43 E	6