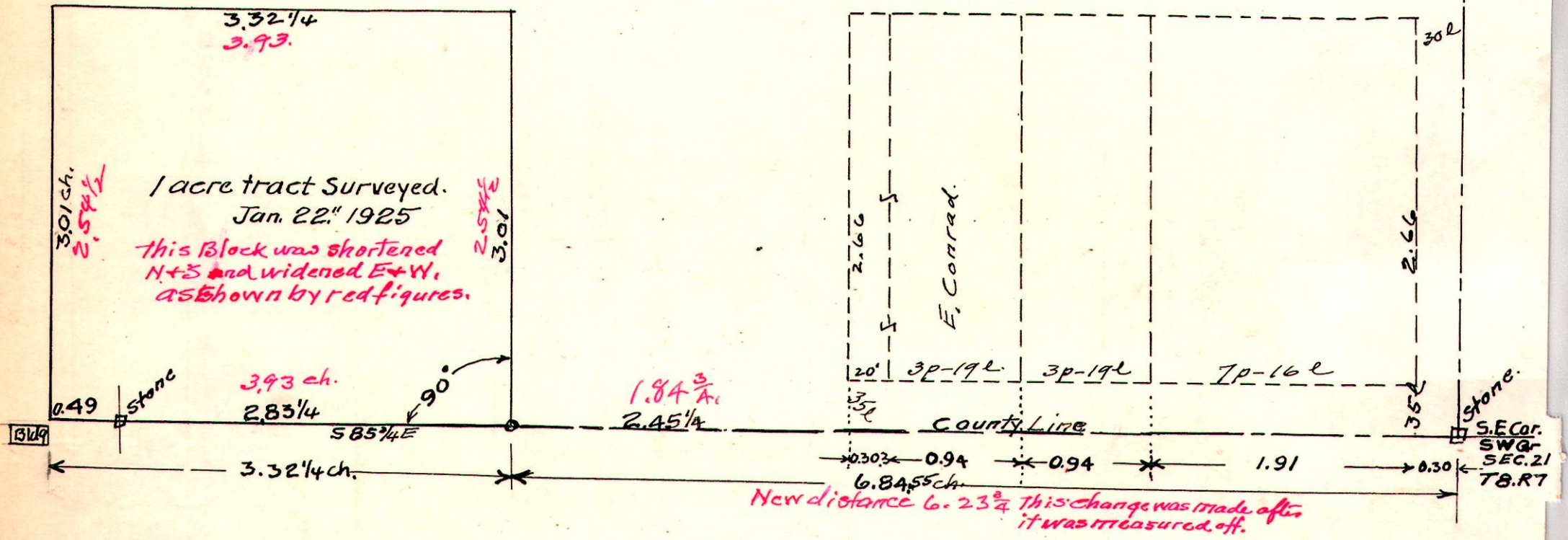


7-8-21

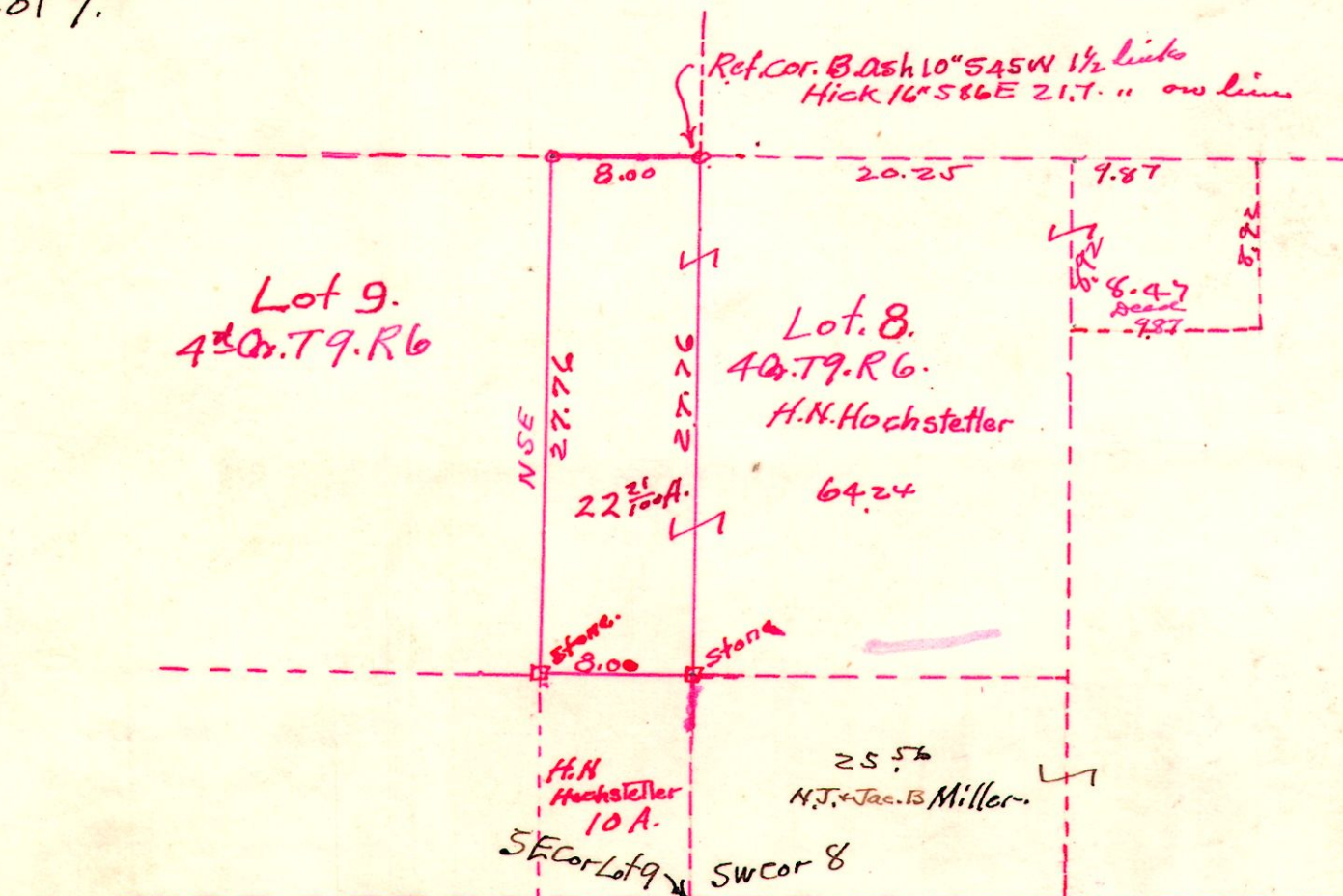
Note-This 1 acre tract was afterwards changed, cut off 46 $\frac{1}{2}$  links on the north end and adding 60 $\frac{3}{4}$  links on the east. See Red figures.

Survey made for G. Bickle on part of S.W. Qr. of Section 21, T.8, R.7. for purpose of cutting off 1 acre sold to Wagers Bros. Jan. 22<sup>nd</sup> 1925.

W.L. Reidenbach Deputy Co. Surveyor.  
H.H. Palmer " " " "



6-9-40. Lot 9.



Survey made for Henry N. Hochstetler of the 22 $\frac{3}{4}$  A tract, March 6, 1925  
W.L. Reidenbach Deputy Co. Sur.