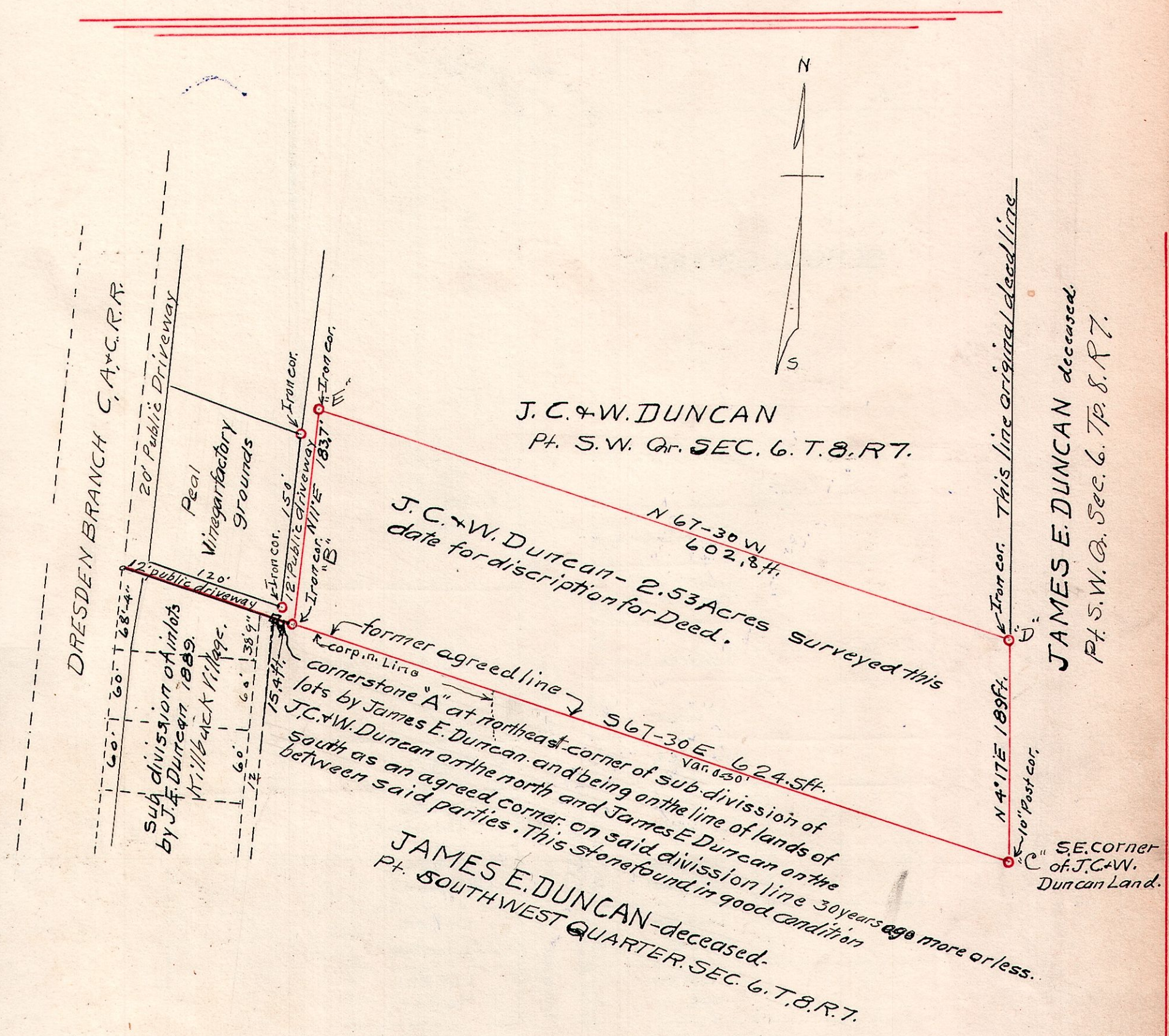


7-8-6. S.W. Qr.



PLAT OF SURVEY

Survey made for J.C. & W. Duncan and Heirs of James E. Duncan deceased. for the purpose of establishing the division line between lands of J.C. & W. Duncan on the north and J.E. Duncan on the south as divided by them about 30 years ago. J.E. Duncan now deceased, W. Duncan now being a living witness and to which the evidences on the ground bear testimony by monument and old established fences and so far both parties have conformed and abided by and in accordance with said division without dissent or dispute and now request that said division be made permanently and be placed on record. Running from the intersection of the North line of the sub division of inlots by J.E. Duncan and the East line of right of way in Killbuck village and running thence S 67° 30' E along the north line of said Lots to a stone monument at the northeast corner of said Allotment and marked Cor. "A" and being a corner of the original Corporation line of Killbuck Village. Thence S 67° 30' E. 639.9 feet to a post at the S.E. Cor. of the J.C. & W. Duncan Land and marked cor. "C" on Plat.

surveyed by W. L. Reidenbach Deputy Co. Surveyor
July, 12, 1922.