

Surveyed for J.L. Lindsey 1920  
the 2 lots ABDC & CDFE.

Line AB was run midway between  
the two dwellings, to a designated  
point B. AB parallel to S. line of City Park.

Point C was determined by the  
intersection of two old fences.

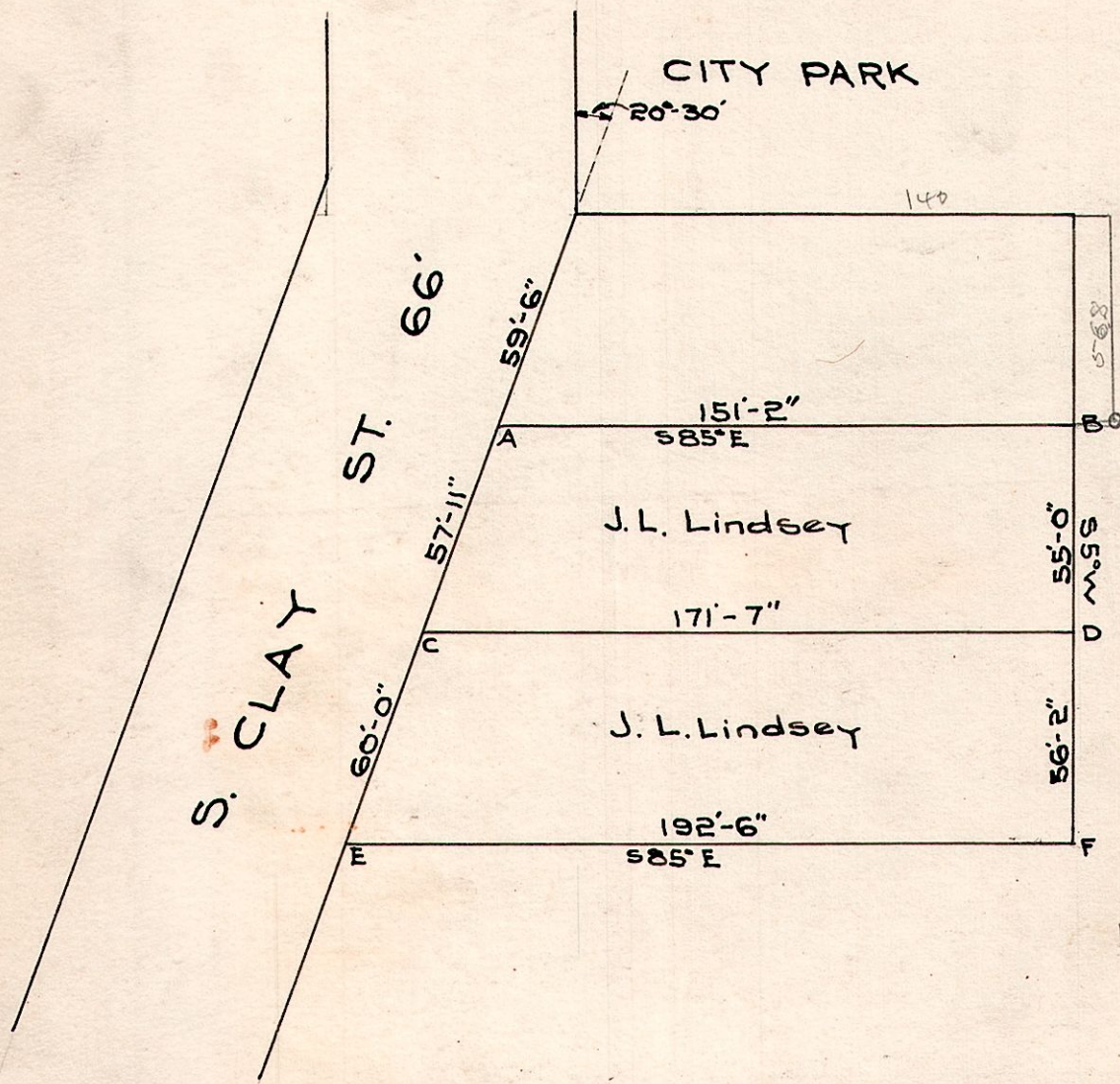
Line CE was measured 60'  
along E. side of S. Clay St.

Line EF was run parallel to  
line AB and of a length calculated  
to make B, D, & F angles of 90°.

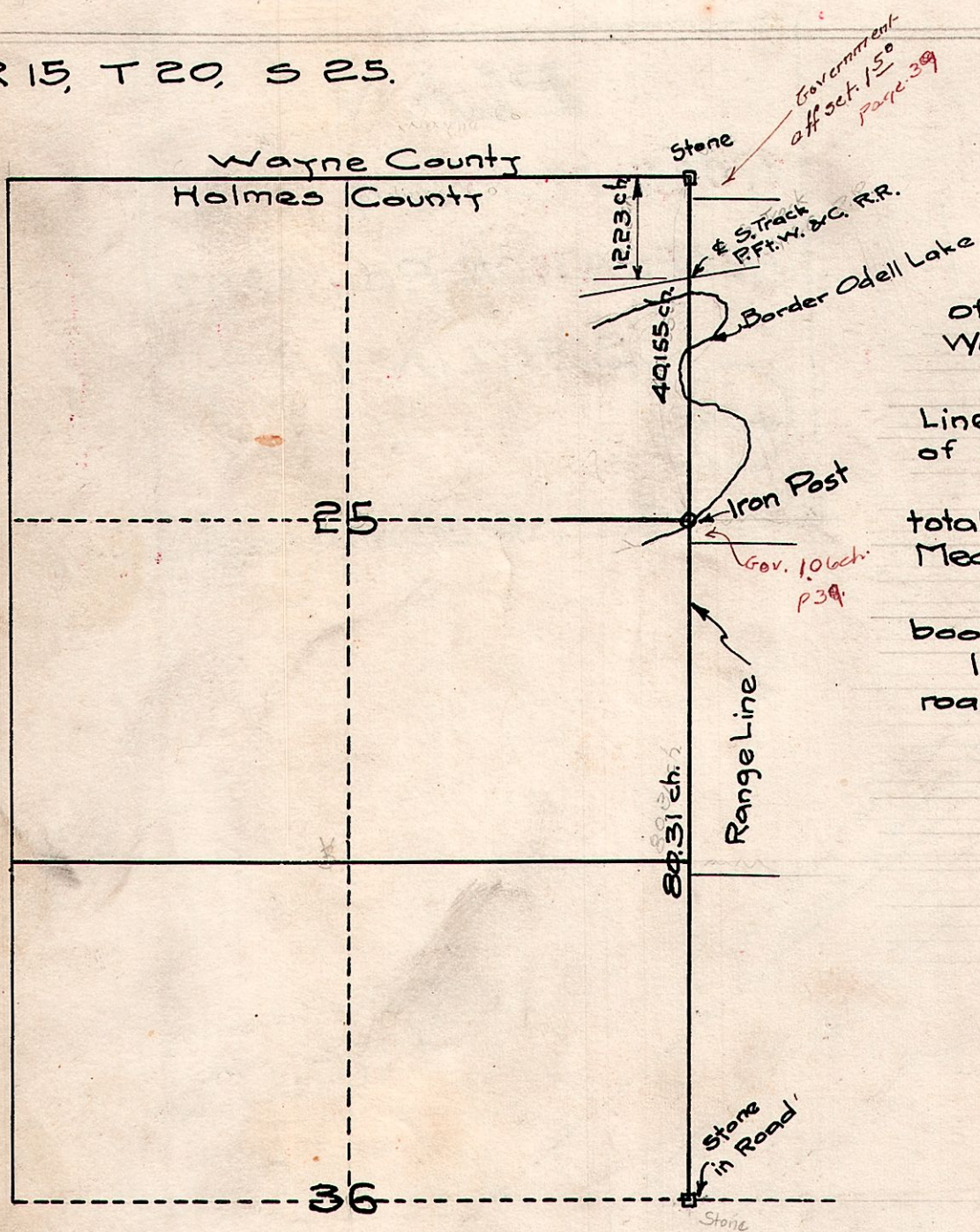
Line FD was measured distance  
calculated to make line CD  
parallel to lines AB & EF.

Line DB showed an overplus of 9"  
from calculated distance.

*P.K. Troutman*  
Dep. Co. Surveyor  
1920



R 15, T 20, S 25.



Survey made to locate S.E. corner  
of N.E. Quarter of S 25 T 20 R 15 in  
Washington Township.

Measured from stone on County  
Line to next stone south at S.E. corner  
of N.E. Quarter of S. 36

Set iron post in waters edge dividing  
total distance into 3 equal Quarter Sections.  
Measured across lake by triangulation.

Field notes in book No 3-1922 p 36 &  
book 1922 p 52 & 53.

Iron post was set 3.03 ch. North of & of  
road proposed by Lakeland Beach Co.

March 1923

*P.K. Troutman*  
Deputy Co. Surveyor.