

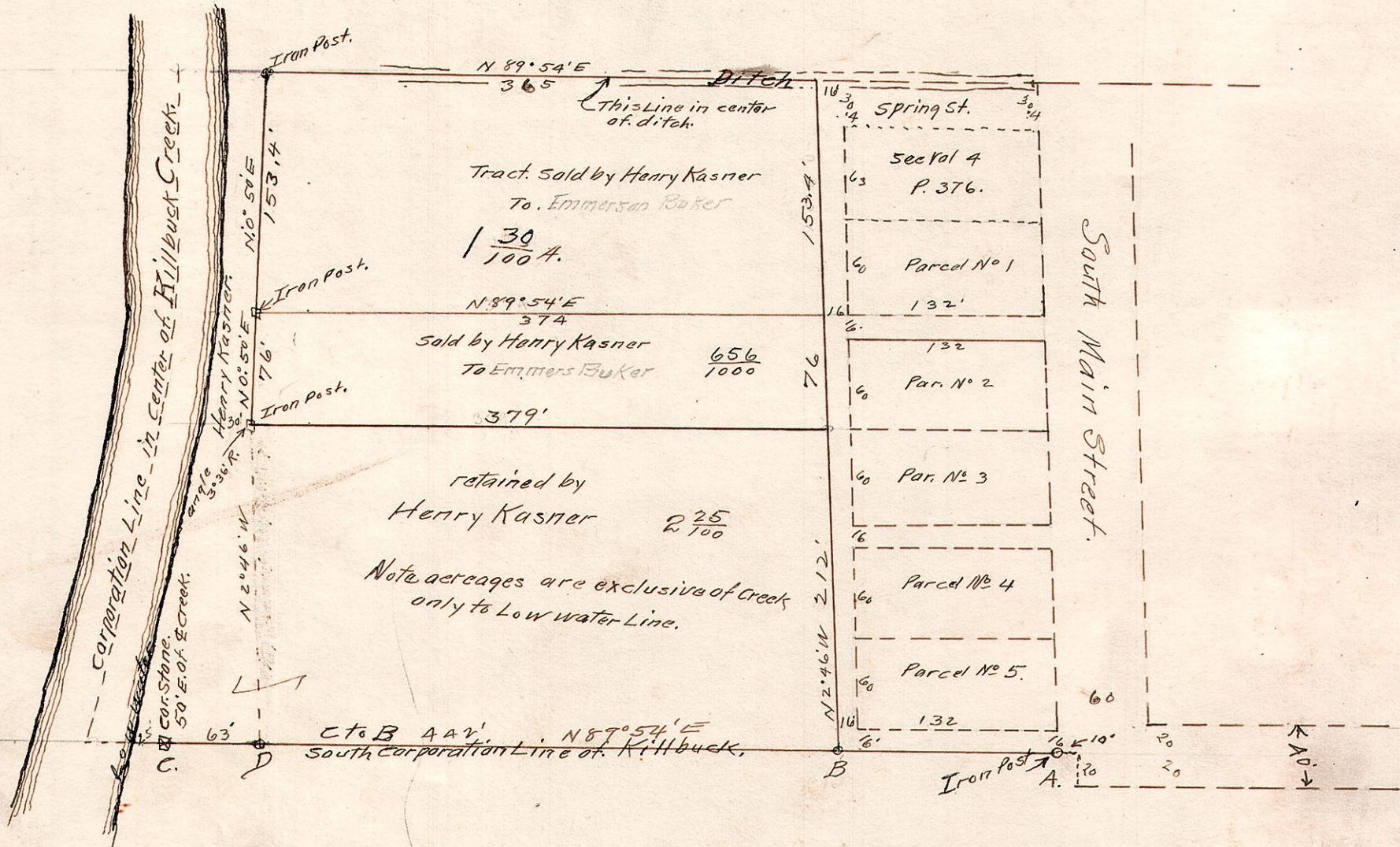
R7. T8 Sec. 15. NW Qr.

Survey made for Henry Kasner to divide Tract immediately west of his first subdivision in Killbuck, Ohio into three parcels. The strip along the creek is reserved with the south tract as a water privilege to Spring Run.

Surveyed as shown on
April 26, 1918

Note - All is in the N.W. Qr.
of Sec. 15. T. 8 Range 7

H. L. Reidenbach
Deputy Co. Surveyor.



374
66